



Reference 9969

Whole Floor Office in Limassol Center

€1,500,000 +VAT

Limassol Center, Limassol

2 Bathrooms | 189 m² Covered

Description

- Internal Area 189m²
- Covered Verandas 19m²
- 4 Parking Spaces
- Lobby
- CCTV
- Storage Room
- Elevator
- 2 W/C
- Kitchen
- Roof Garden
- Energy Efficiency "A"
- Close to several amenities

Covered veranda	19 m ²
Parking spaces	4
Energy efficiency rating	A
Year of construction	2026
Status	Under construction



Facilities

✓ Parking · Covered ✓ Elevator

Features

✓ 24-hour security ✓ CCTV ✓ Easy access to main roads ✓ Fire detector ✓ Roof garden
✓ Near amenities ✓ Lobby ✓ Veranda

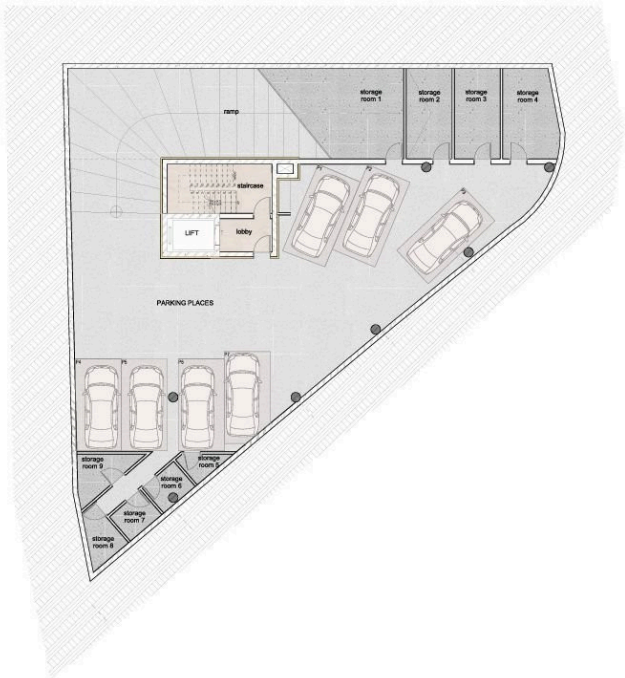
Gallery



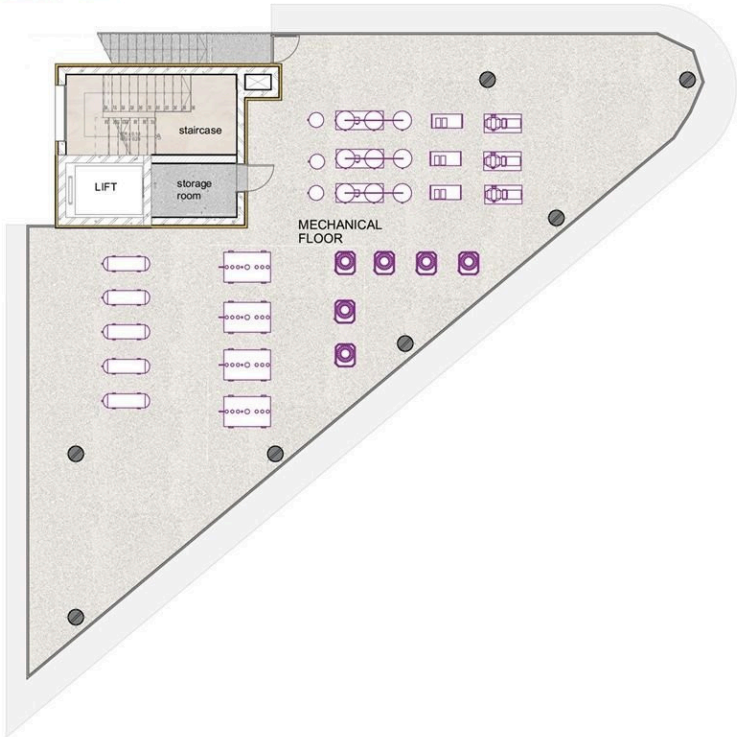




BASEMENT



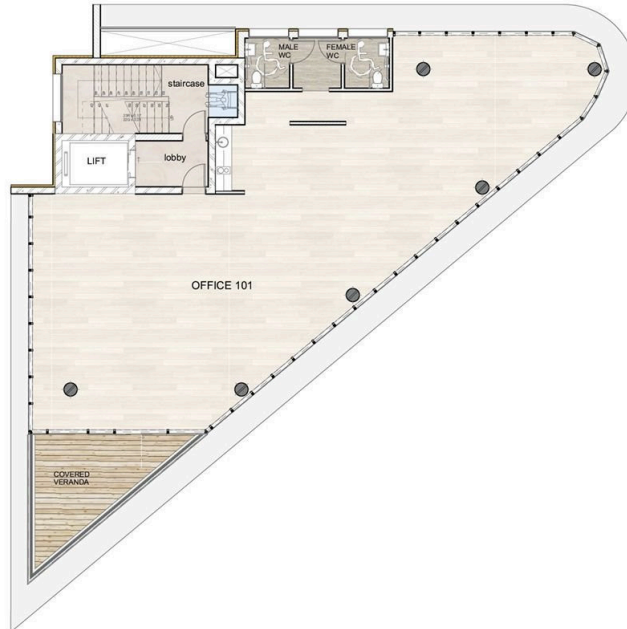
MECHANICAL



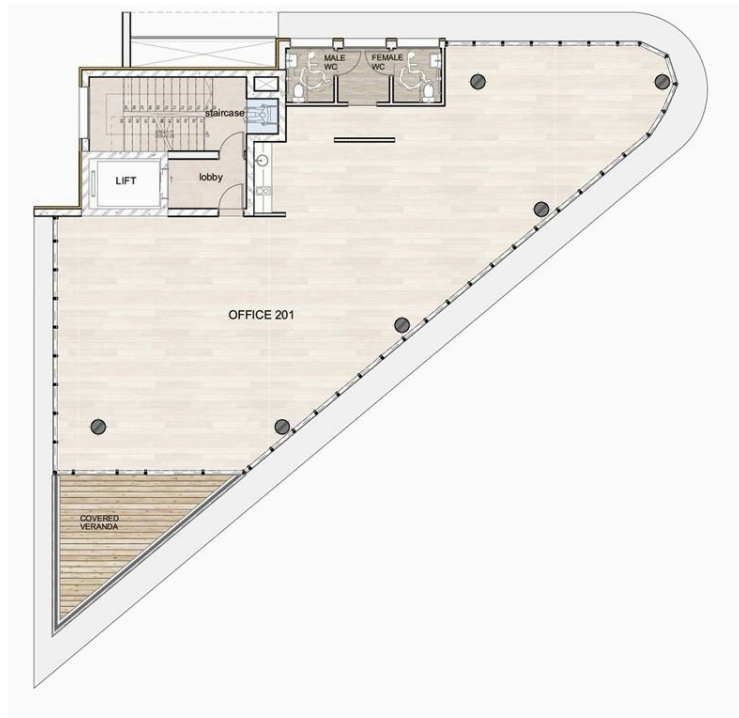
GROUND FLOOR



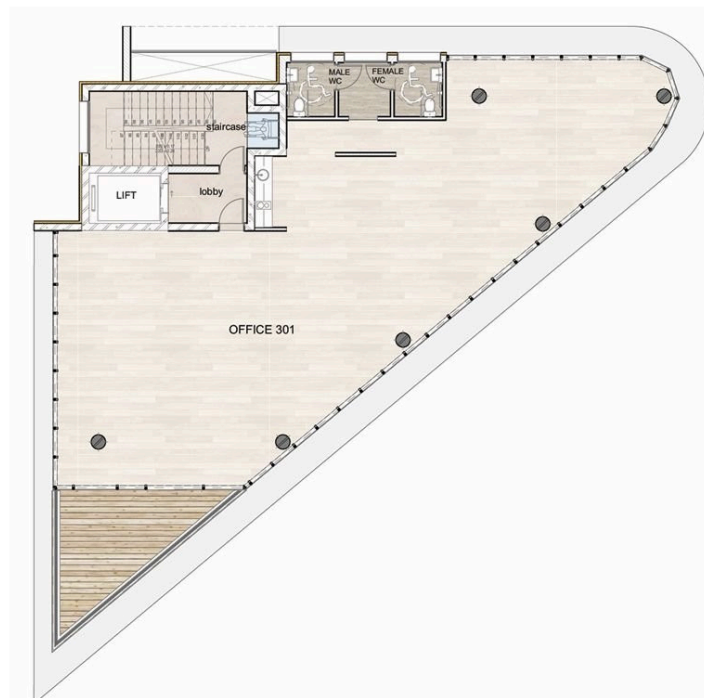
1ST FLOOR



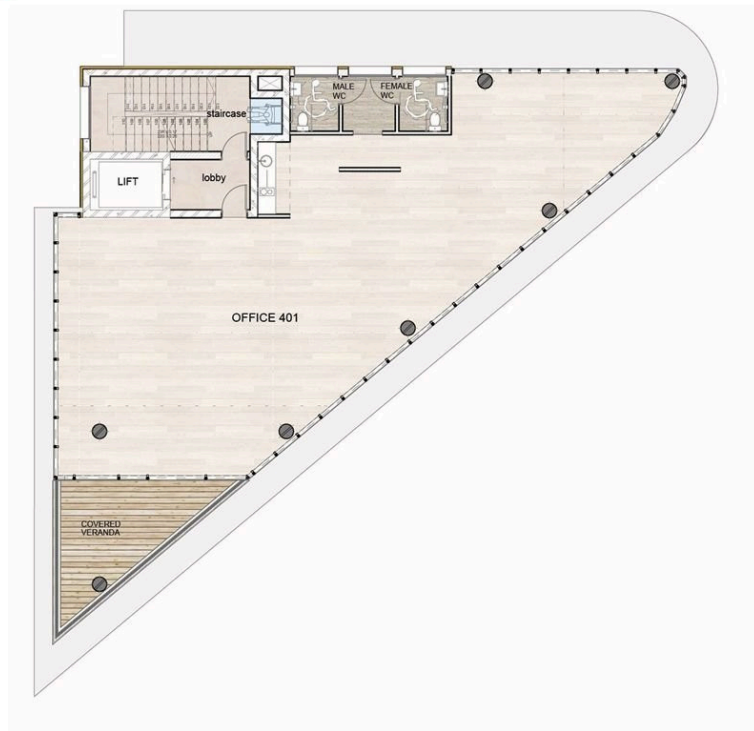
2ND FLOOR



3RD FLOOR



4th FLOOR



ROOF GARDEN

