

Reference 9255

Luxury 5 Bed House with swimming Pool in Mouttagiaka, **€2,000,000 +VAT**
Limassol

Mouttagiaka, Limassol

5 Bedrooms | 5 Bathrooms | 349.8 m² Covered

Description

- 5 bedrooms
- 5 W/C
- Internal Area 349.8m²
- Plot Area 500m²
- Swimming Pool
- Basement
- Roof Garden
- Sauna
- Playroom

Plot	500 m ²
Status	Key ready



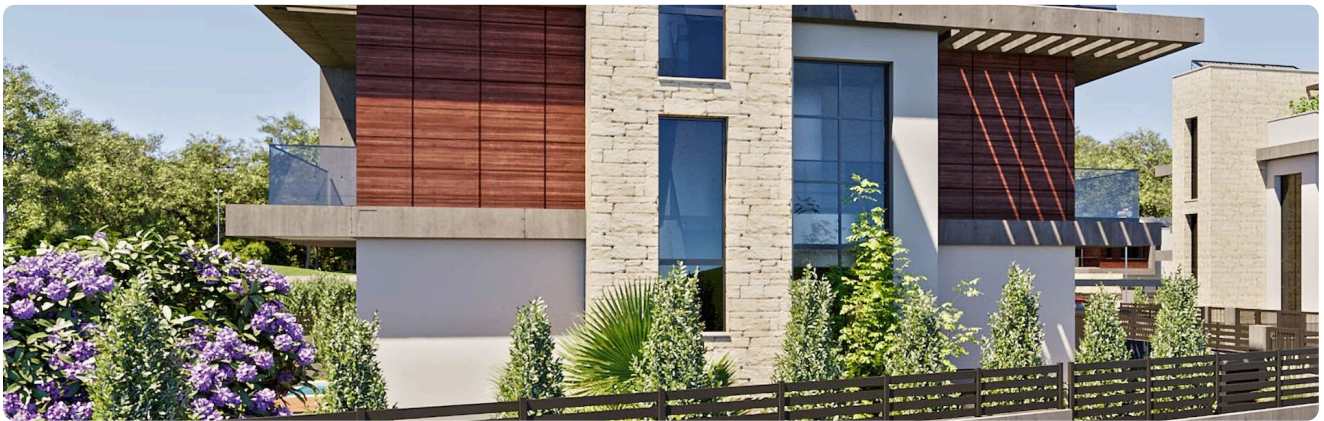
Facilities

✓ Pool · Private ✓ Sauna

Features

✓ Guest WC ✓ Veranda ✓ Parquet flooring ✓ En suite bathroom ✓ Luxury specifications
✓ Modern design ✓ Guestroom ✓ Roof garden ✓ Laundry room ✓ Garden
✓ Internal stairs ✓ Play room ✓ Combined kitchen and dining area

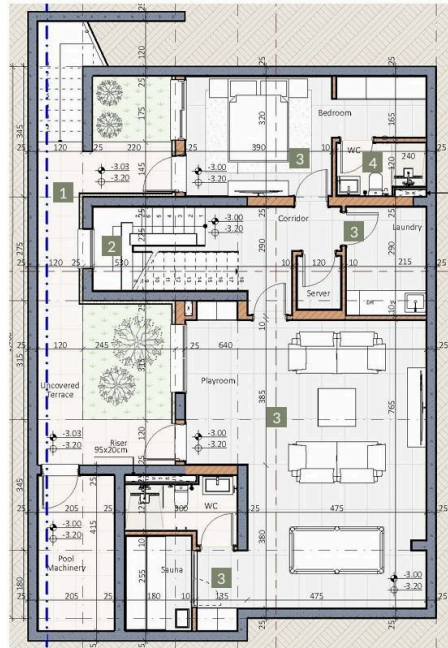
Gallery



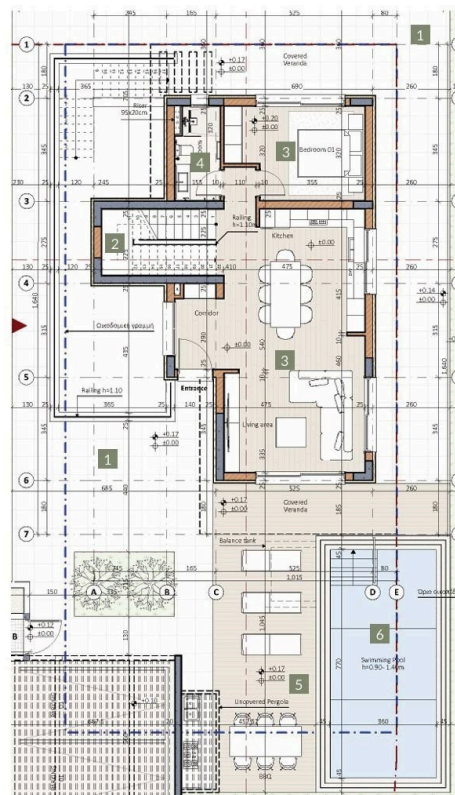


Floor plans

BASEMENT FLOOR



GROUND FLOOR



Architectural floor plan of a 3-bedroom apartment. The plan includes a Covered Veranda (1) at the top, a Master Bedroom, Bedroom 02, and Bedroom 01. It also features a Bathroom, a Corridor, a Railing (h=1.10m), and a Stairs area. The plan is annotated with dimensions and area calculations in square meters (m²).

Dimensions and Area Calculations:

- Overall dimensions: 20.5m x 18.0m.
- Veranda (1): 5.50m x 1.60m = 8.80m².
- Master Bedroom: 3.75m x 3.35m = 12.56m².
- Bedroom 02: 3.40m x 3.30m = 11.22m².
- Bedroom 01: 3.35m x 3.50m = 11.73m².
- Bathroom: 1.80m x 1.40m = 2.52m².
- Corridor: 1.40m x 1.10m = 1.54m².
- Stairs: 2.70m x 1.40m = 3.78m².
- Railing: 1.10m x 1.40m = 1.54m².
- Veranda (1) at bottom: 5.50m x 1.60m = 8.80m².

Area Calculations (m²):

- Veranda (1): 8.80
- Master Bedroom: 12.56
- Bedroom 02: 11.22
- Bedroom 01: 11.73
- Bathroom: 2.52
- Corridor: 1.54
- Stairs: 3.78
- Railing: 1.54
- Veranda (1) at bottom: 8.80

Other annotations include "Riser 95x20cm", "Riser 40x20cm", and "Rail h=1.10".

[illegible]