

Reference 9214

## 2 Bed Apartment in Ypsonas, Limassol

**€278,000** +VAT

Ypsonas, Limassol

2 Bedrooms | 2 Bathrooms | 85.2 m<sup>2</sup> Covered

### Description

- 2 bedrooms
- 2 W/C
- Internal Area 85.2m<sup>2</sup>
- Covered Veranda 18.70m<sup>2</sup>
- Uncovered Veranda 2.70m<sup>2</sup>
- Covered Parking
- Storage
- Energy Efficiency "A"

Covered veranda	18.7 m <sup>2</sup>
Uncovered veranda	2.7 m <sup>2</sup>
Parking spaces	1
Energy efficiency rating	A
Year of construction	2025
Status	Under construction



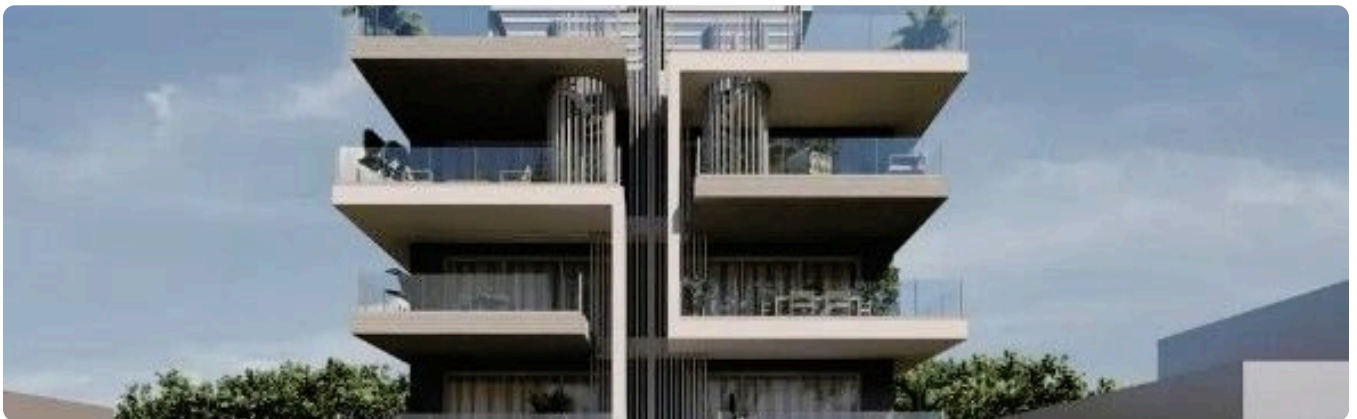
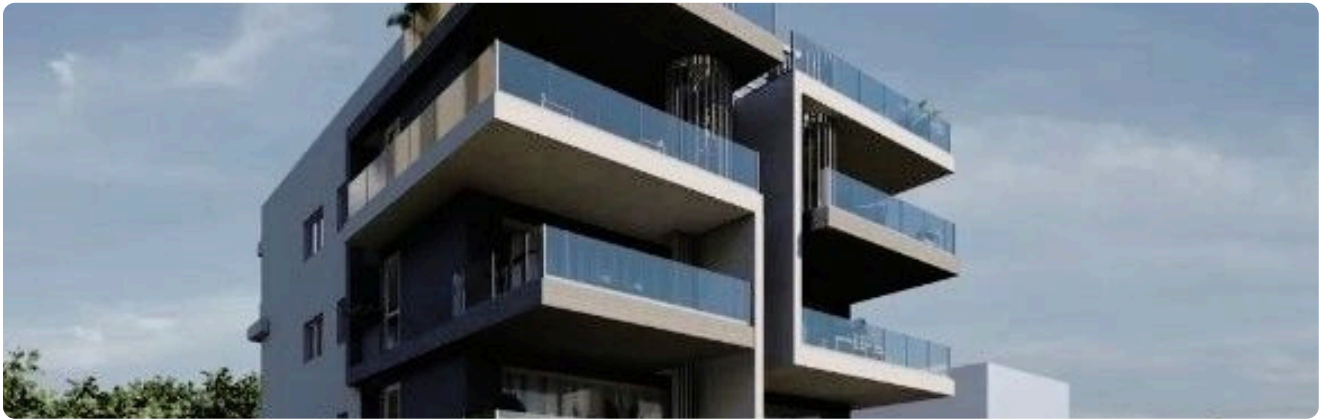
## Facilities

- ✓ Aircondition · Split system
  - ✓ Heating · Provision
  - ✓ Parking · Covered
  - ✓ Elevator
  - ✓ Storage
  - ✓ Solar water heater
- 

## Features

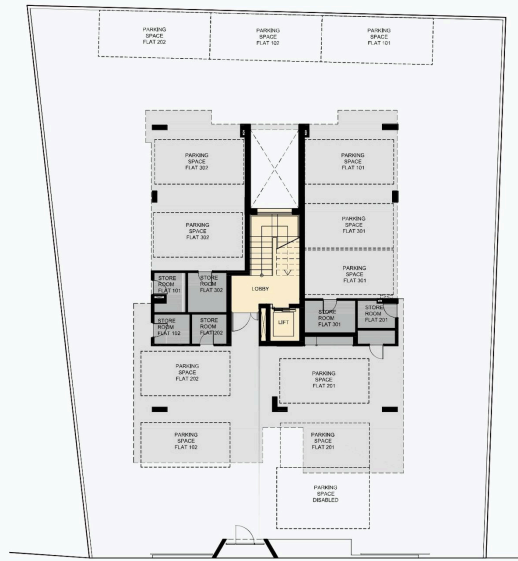
- ✓ Veranda
  - ✓ CCTV
  - ✓ Modern design
  - ✓ Near amenities
  - ✓ Open plan
  - ✓ Pressurized water system
  - ✓ Sound insulation
  - ✓ Thermal insulation
- 

## Gallery



# Floor plans

## GROUND FLOOR



8

## 1ST FLOOR



Flat	Floor	Bedrooms	Internal covered area	Covered veranda	Uncovered veranda	Roof Garden	Parking / store room	Total area
101	1	2	85.2m <sup>2</sup>	20.50m <sup>2</sup>	5.85m <sup>2</sup>	—	2/1	111.55m <sup>2</sup>
102	1	2	85.2m <sup>2</sup>	18.70m <sup>2</sup>	2.70m <sup>2</sup>	—	2/1	106.60m <sup>2</sup>

9



2ND FLOOR



Flat	Floor	Bedrooms	Internal covered area	Covered veranda	Uncovered veranda	Roof Garden	Parking / store room	Total area
201	2	2	85.2m <sup>2</sup>	19.20m <sup>2</sup>	2.70m <sup>2</sup>	—	2/1	107.10m <sup>2</sup>
202	2	2	85.2m <sup>2</sup>	21.40m <sup>2</sup>	5.30m <sup>2</sup>	—	1/1	111.90m <sup>2</sup>

10

3RD FLOOR



Flat	Floor	Bedrooms	Internal covered area	Covered veranda	Uncovered veranda	Roof Garden	Parking / store room	Total area
301	3	2	85.2m <sup>2</sup>	19.95m <sup>2</sup>	4.70m <sup>2</sup>	37.90m <sup>2</sup>	2/1	147.75m <sup>2</sup>
302	3	2	85.2m <sup>2</sup>	18.50m <sup>2</sup>	2.95m <sup>2</sup>	38.55m <sup>2</sup>	2/1	145.20m <sup>2</sup>

11



ROOF

