



Reference 8500

Studio Apartment in Kato Polemidia, Limassol

€130,000 +VAT

Polemidia, Limassol

Studio | 1 Bathroom | 36 m² Covered

Description

- Studio
- 1 W/C
- Internal Area 36m²
- Covered Verandas 13m²
- Covered Parking
- Storage

Covered veranda	13 m ²
Parking spaces	1
Energy efficiency rating	A
Year of Construction	2026
Status	Under construction



Facilities

- ✓ Parking · Covered
- ✓ Storage
- ✓ Solar water heater

Features

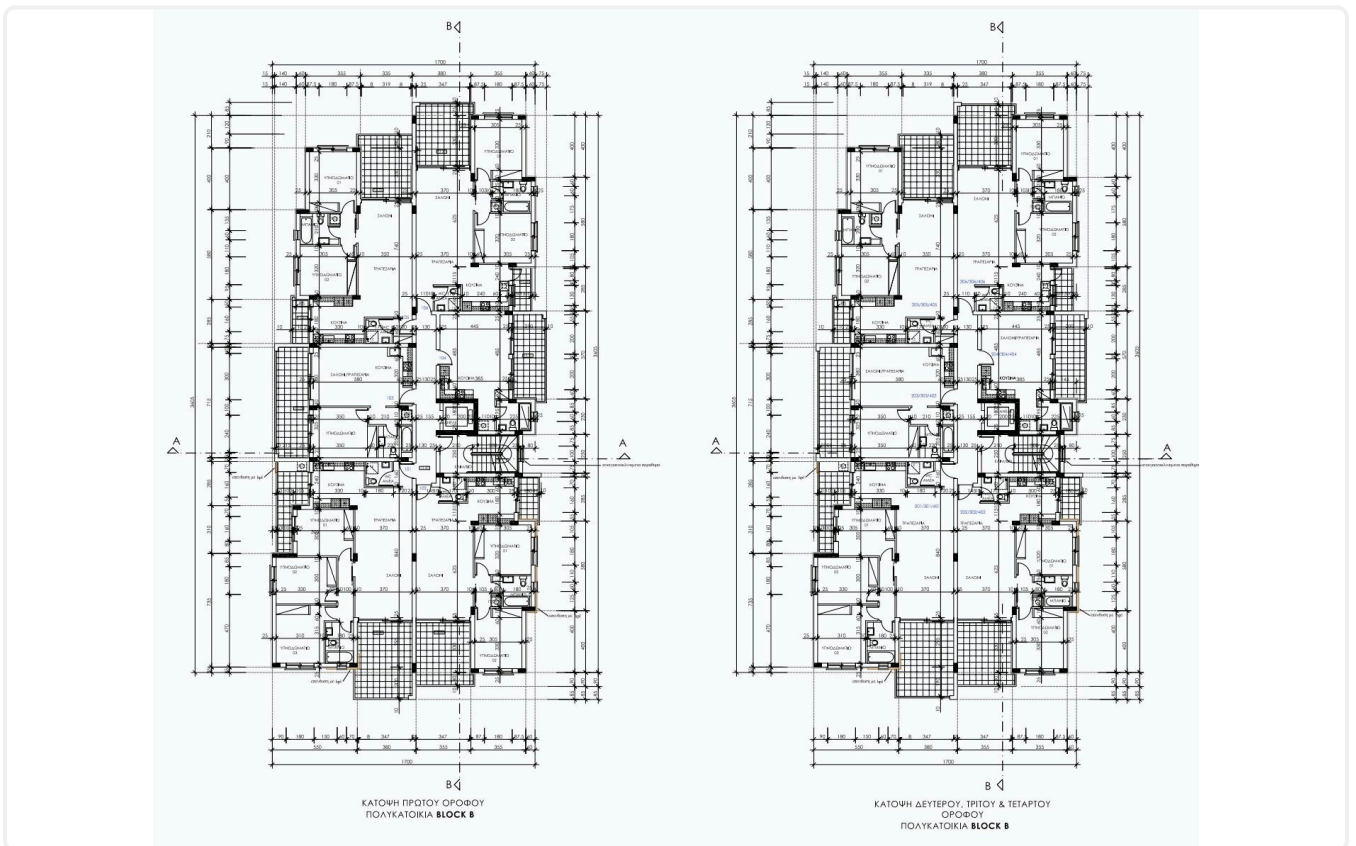
- ✓ Veranda
- ✓ Granite countertops
- ✓ Ceramic tiles
- ✓ Modern design
- ✓ Near amenities
- ✓ Open plan
- ✓ Thermal insulation

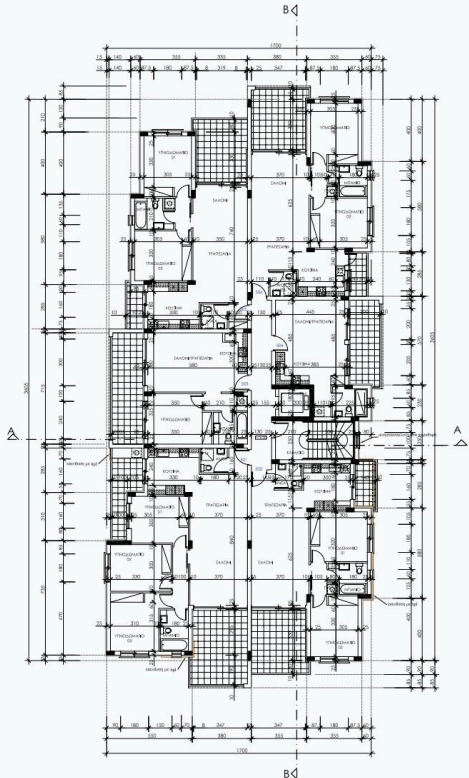
Gallery



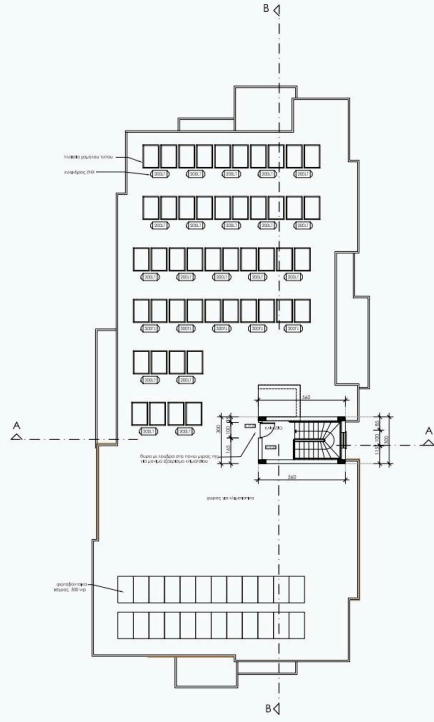


Floor plans





ΚΑΤΩΦΗ 5ου ΟΡΟΦΟΥ
ΠΟΛΥΚΑΤΟΙΚΙΑ BLOCK B



ΚΑΤΩΦΗ ΟΡΟΦΗΣ
ΠΟΛΥΚΑΤΟΙΚΙΑ BLOCK B

