



Reference 8496

2 Bed Apartment in Kato Polemidia, Limassol

€270,000 +VAT

Polemidia, Limassol

2 Bedrooms | 2 Bathrooms | 83 m² Covered

Description

- 2 bedrooms
- 2 W/C
- Internal Area 83m²
- Covered Verandas 22m²
- Covered Parking
- Storage

Covered veranda	22 m ²
Parking spaces	1
Energy efficiency rating	A
Year of Construction	2026
Status	Under construction



Facilities

- ✓ Parking · Covered
- ✓ Storage
- ✓ Solar water heater

Features

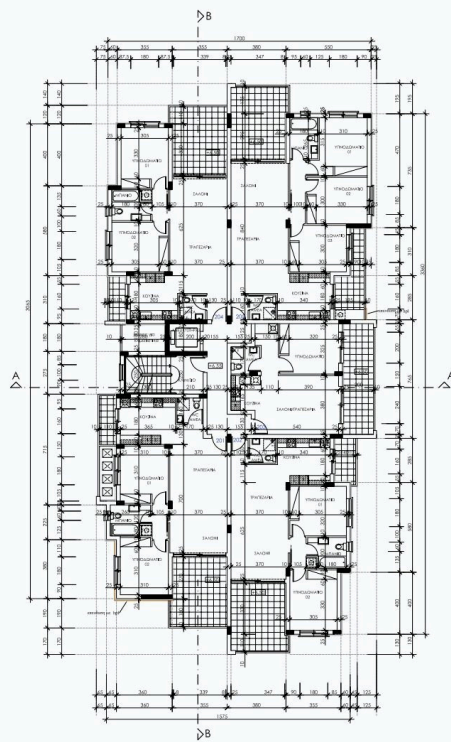
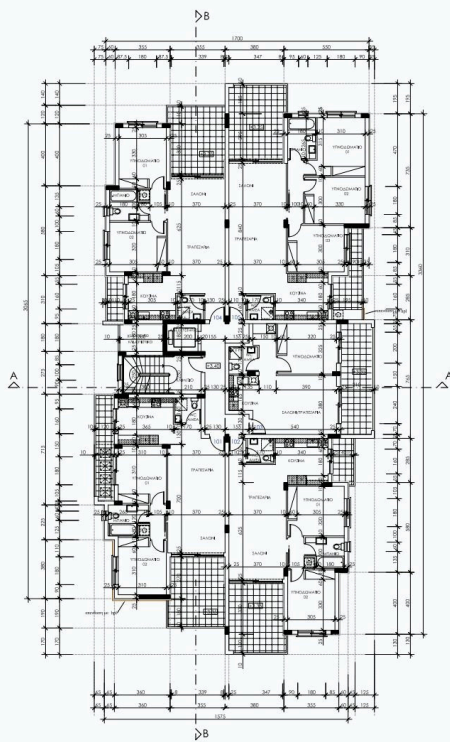
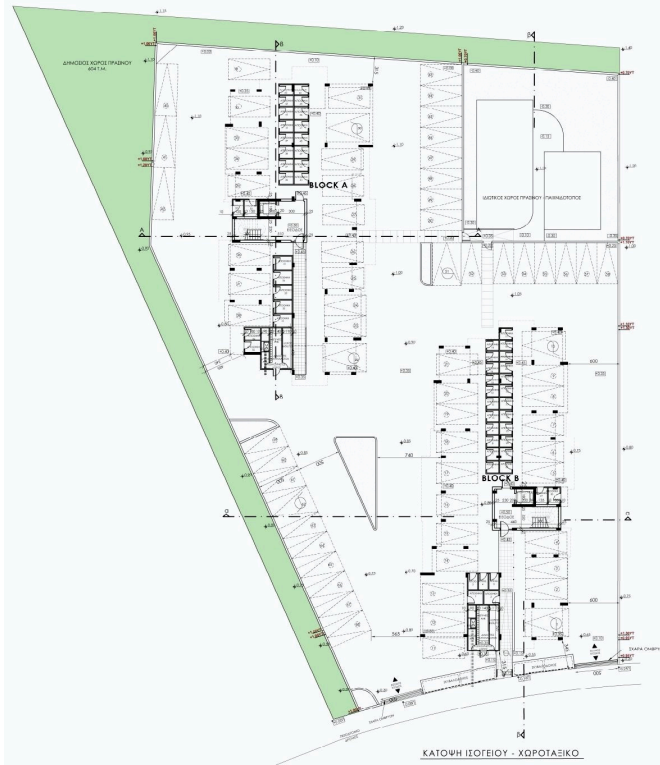
- ✓ Veranda
- ✓ Granite countertops
- ✓ Ceramic tiles
- ✓ Modern design
- ✓ Near amenities
- ✓ Open plan
- ✓ Thermal insulation

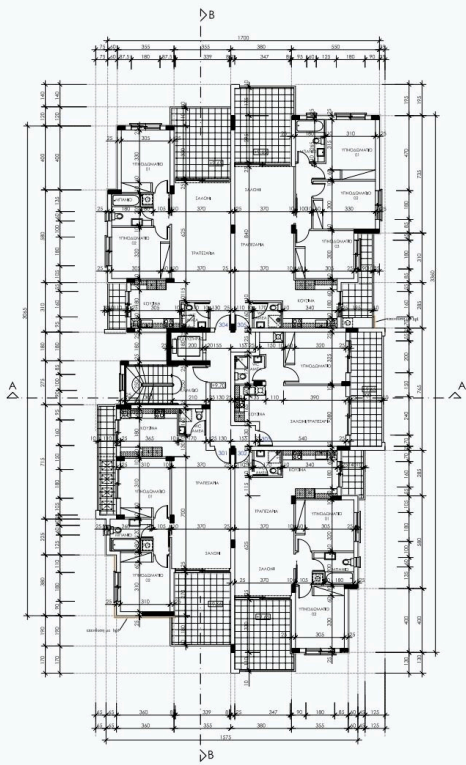
Gallery



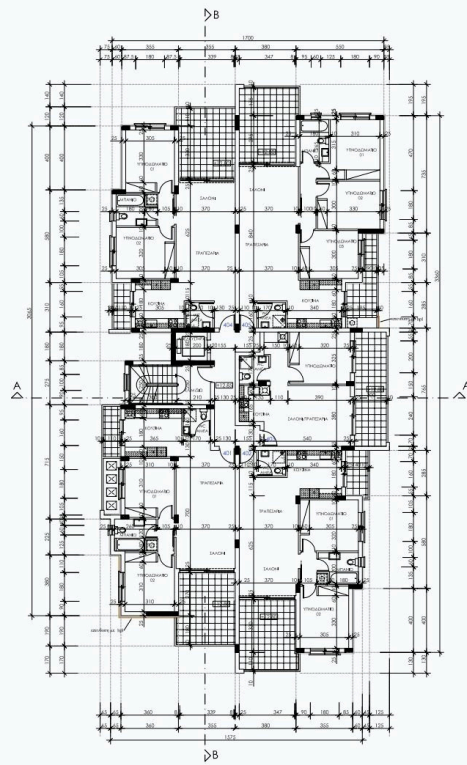


Floor plans

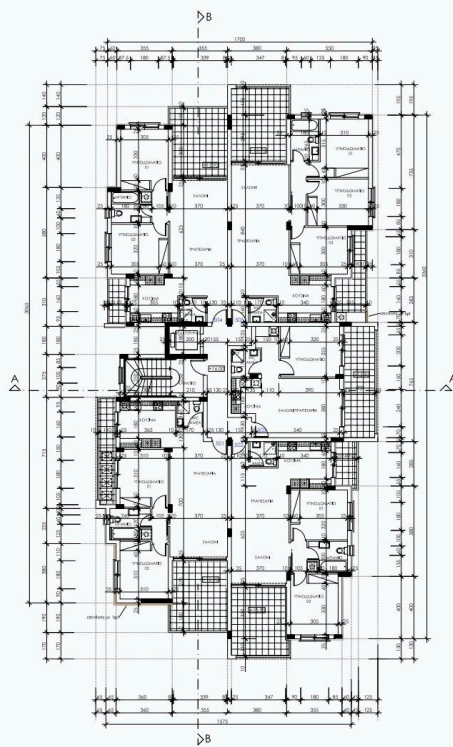




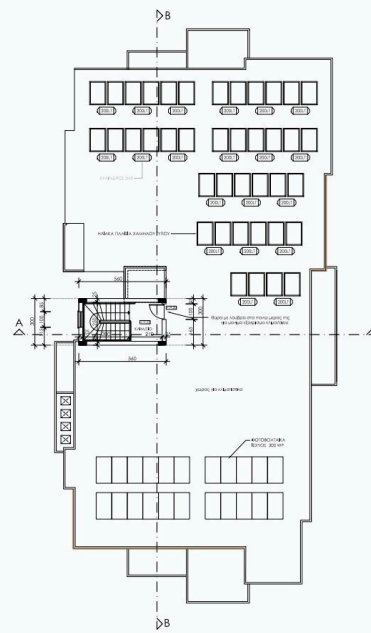
ΚΑΤΩΦΗ ΤΡΙΤΟΥ ΟΡΟΦΟΥ
ΠΟΛΥΚΑΤΟΙΚΙΑ BLOCK A



ΚΑΤΩΦΗ ΤΕΤΑΡΤΟΥ ΟΡΟΦΟΥ
ΠΟΛΥΚΑΤΟΙΚΙΑ BLOCK A



ΚΑΤΩΦΗ ΠΕΜΠΤΟΥ ΟΡΟΦΟΥ
ΠΟΛΥΚΑΤΟΙΚΙΑ BLOCK A



ΚΑΤΩΦΗ ΟΡΟΦΗΣ
ΠΟΛΥΚΑΤΟΙΚΙΑ BLOCK A

