



Reference 8368

**€280,000** +VAT

Polemida, Limassol

2 Bedrooms | 2 Bathrooms | 75 m<sup>2</sup> Covered

## Description

Covered veranda	19 m <sup>2</sup>
Parking spaces	1
Energy efficiency rating	A
Status	Key ready



## Facilities

- ✓ Aircondition · Provision
- ✓ Elevator
- ✓ Solar photovoltaic panels, Provision
- ✓ Parking · Covered
- ✓ Solar water heater

## Features

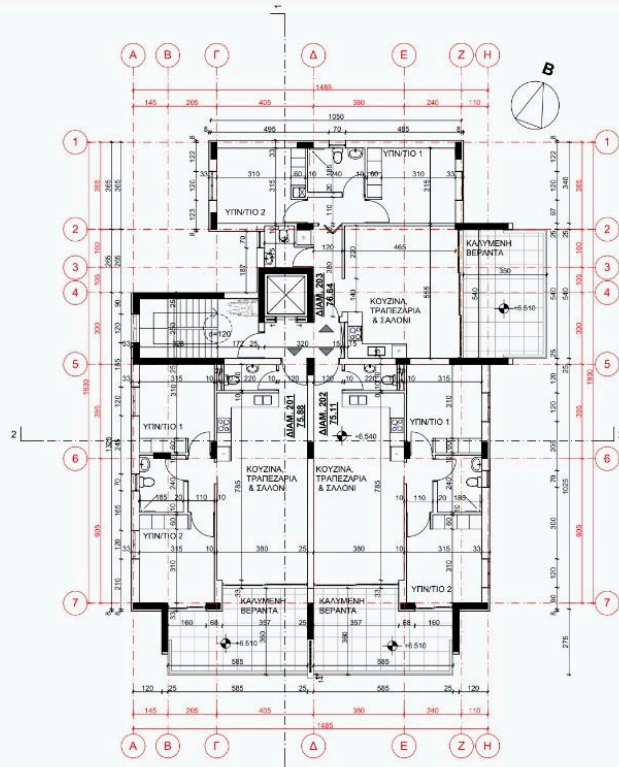
- ✓ Guest WC
- ✓ En suite Bathroom
- ✓ Easy access to main roads
- ✓ CCTV
- ✓ Modern design
- ✓ Thermal insulation

## Gallery





# Floor plans



ΚΑΤΩΗ Β ΟΡΟΦΟΥ

