

Reference 8201

2 Bed Apartment in Pyla, Larnaca

€233,910 +VAT

Pyla, Larnaca

2 Bedrooms | 2 Bathrooms | 81.2 m² Covered

Description

- 2 bedrooms
- 2 W/C
- Internal Area 81.20m²
- Covered Verandas 9m²
- Covered Parking
- Communal Swimming Pool
- Gym
- Playground
- Four-minute drive to the beach

Covered veranda	9 m ²
Parking spaces	1
Energy efficiency rating	A
Year of construction	2025
Status	Under construction



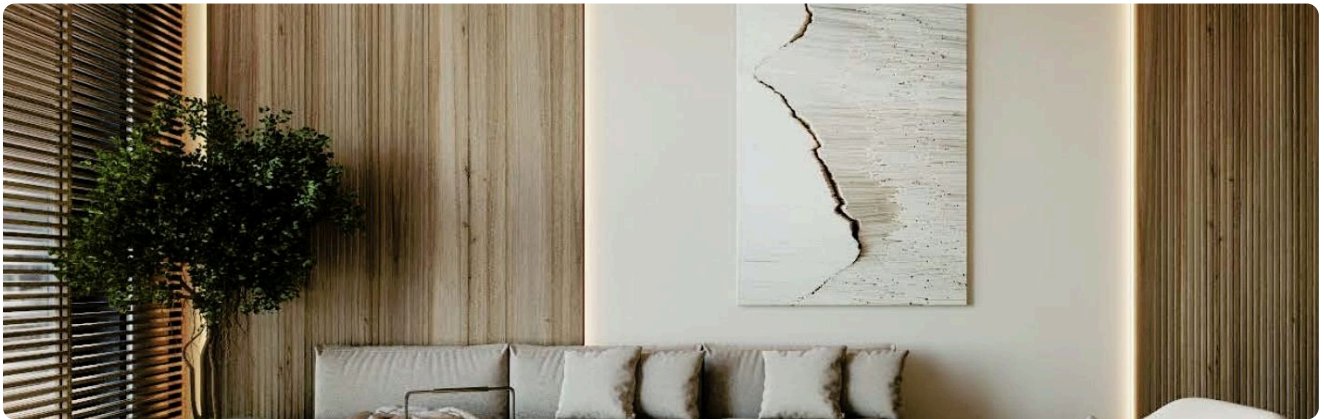
Facilities

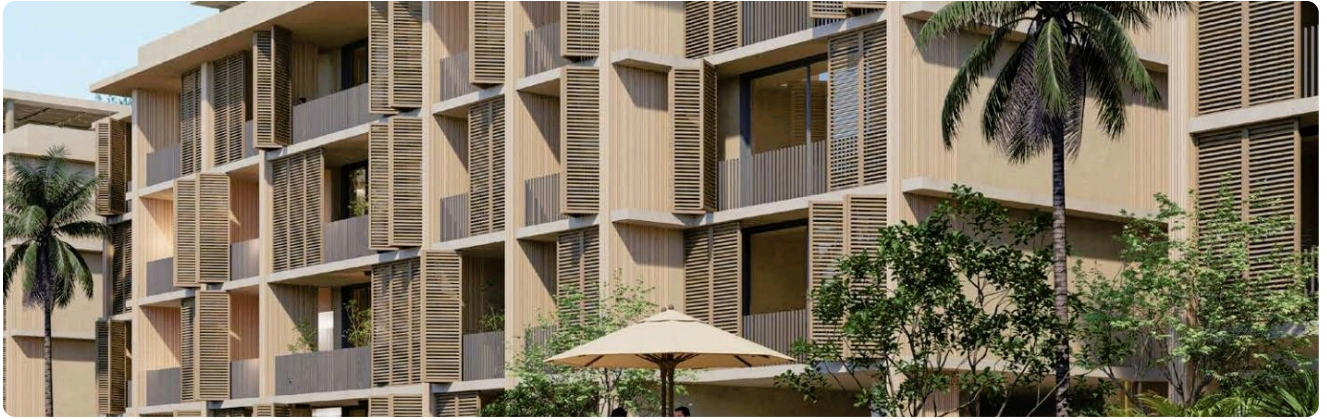
✓ Parking · Covered ✓ Pool · Communal ✓ Childrens playground ✓ Gym

Features

✓ Veranda ✓ Luxury specifications ✓ Modern design ✓ Panoramic view ✓ Near amenities
✓ Open plan ✓ Investment opportunity ✓ Entrance gate

Gallery





Floor plans

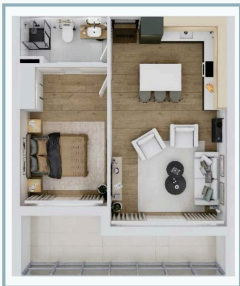
1 BED ROOM

1 1 66 sqm

TYPE 1



TYPE 2



2 BED ROOM

2 2 98 sqm

TYPE 1



TYPE 2



3 BED ROOM

3 3 129 sqm
avg

TYPE 1



TYPE 2

