



Reference 8128

Big 2 Bed Apartment in Panthea, Limassol

€435,000 +VAT

Panthea, Limassol

2 Bedrooms | 2 Bathrooms | 87 m² Covered

Description

- 2 bedrooms
- 2 W/C
- Internal Area 87m²
- Covered Veranda 19m²
- Covered Parking
- Fully Equipped Gym
- Communal Swimming Pool
- Storage
- Close to several amenities
- Close to the beach

Covered veranda	19 m ²
Parking spaces	2
Energy efficiency rating	A
Year of construction	2025
Status	Under construction



Facilities

✓ Parking · Covered ✓ Pool · Communal ✓ Gym ✓ Storage

Features

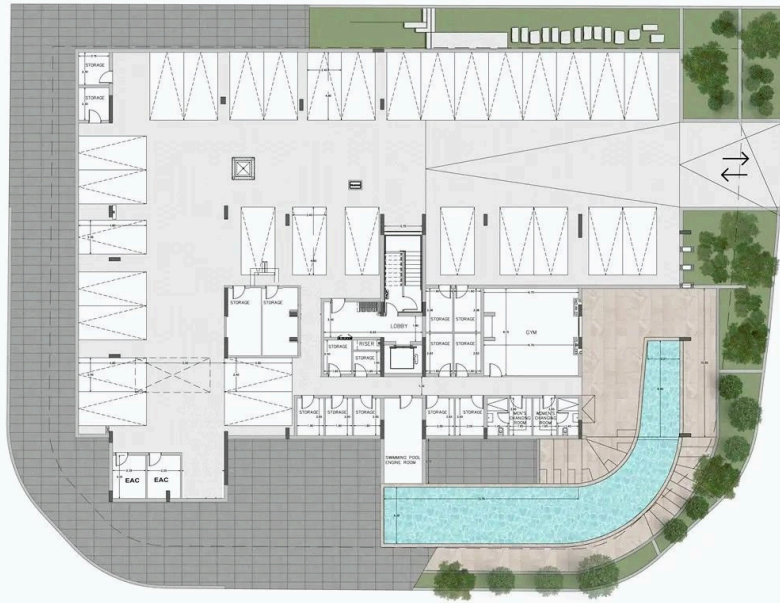
✓ Veranda ✓ Luxury specifications ✓ Modern design ✓ Near amenities ✓ Open plan
✓ City view ✓ Bright

Gallery

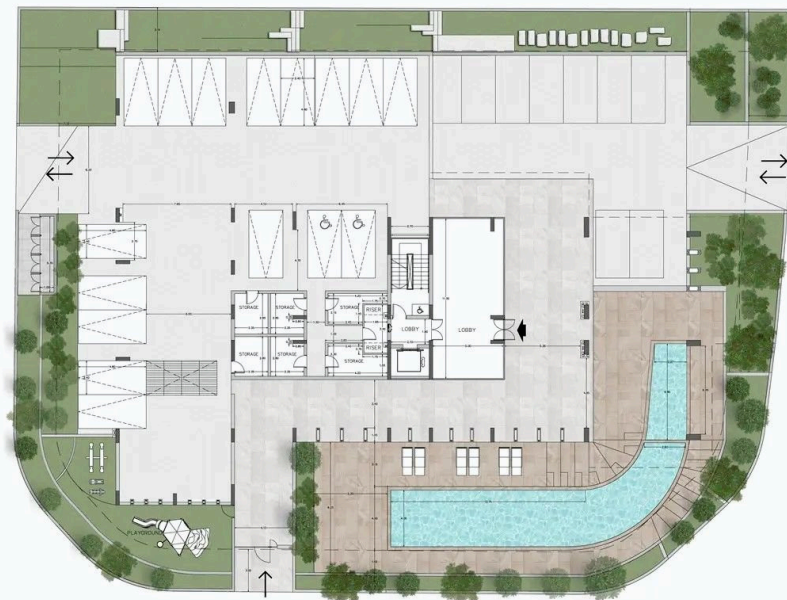




Floor plans



BASEMENT



GROUND FLOOR





FIRST FLOOR

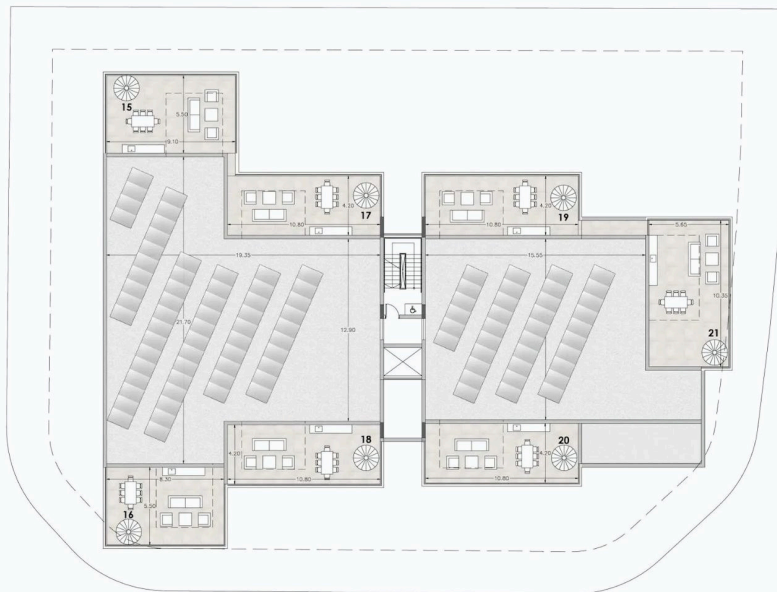


SECOND FLOOR





THIRD FLOOR



ROOF TOP

