



Reference 7959

## 3 Bed Apartment in Larnaca Center

**€305,000** +VAT

Larnaca City, Larnaca

3 Bedrooms | 2 Bathrooms | 97 m<sup>2</sup> Covered

### Description

- 3 bedrooms
- 2 W/C
- Internal Area 97m<sup>2</sup>
- Covered Verandas 18m<sup>2</sup>
- Covered Parking
- Storage
- Photovoltaic Panels
- Walking distance to all amenities

Covered veranda	18 m <sup>2</sup>
Parking spaces	1
Energy efficiency rating	A
Year of Construction	2025
Status	Under construction



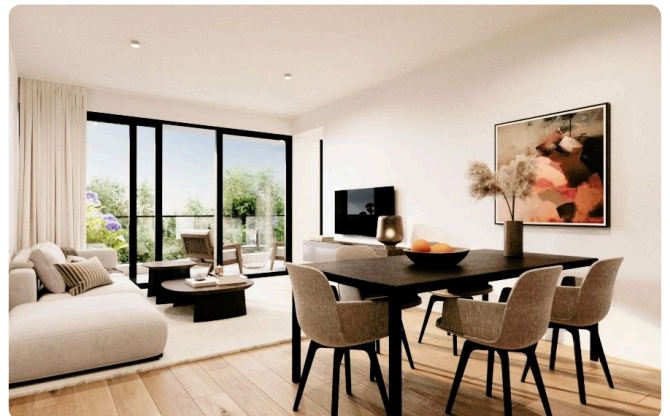
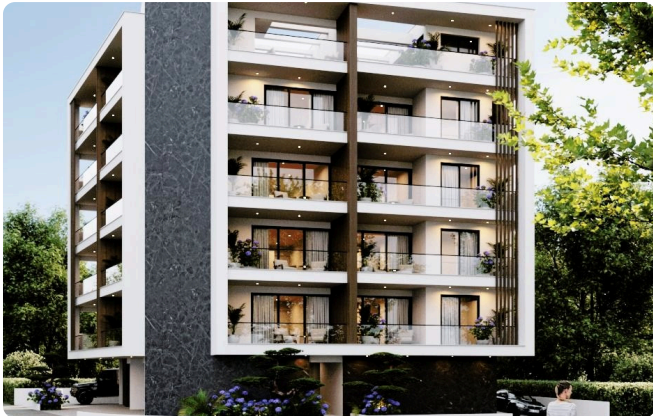
## Facilities

- ✓ Parking · Covered
- ✓ Solar photovoltaic panels
- ✓ Elevator

## Features

- ✓ Veranda
- ✓ Modern design
- ✓ Spacious rooms
- ✓ En suite Bathroom
- ✓ Near amenities
- ✓ Easy access to main roads

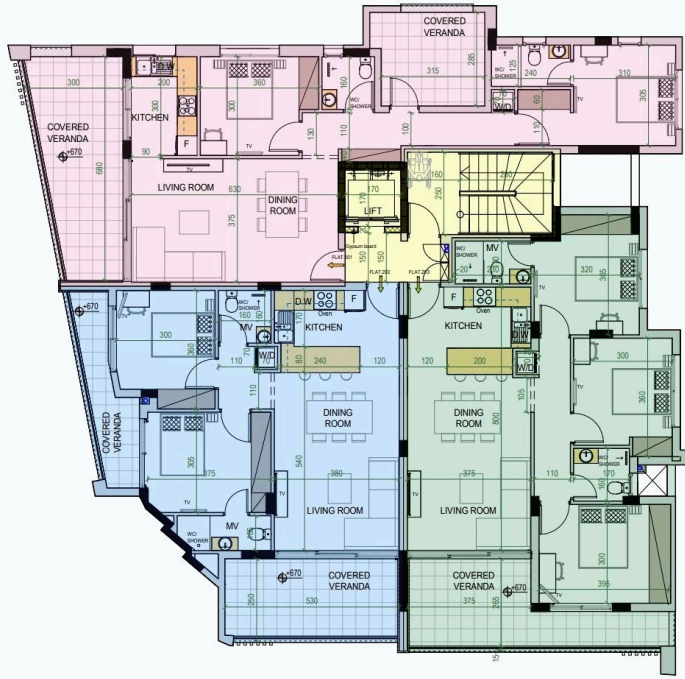
## Gallery









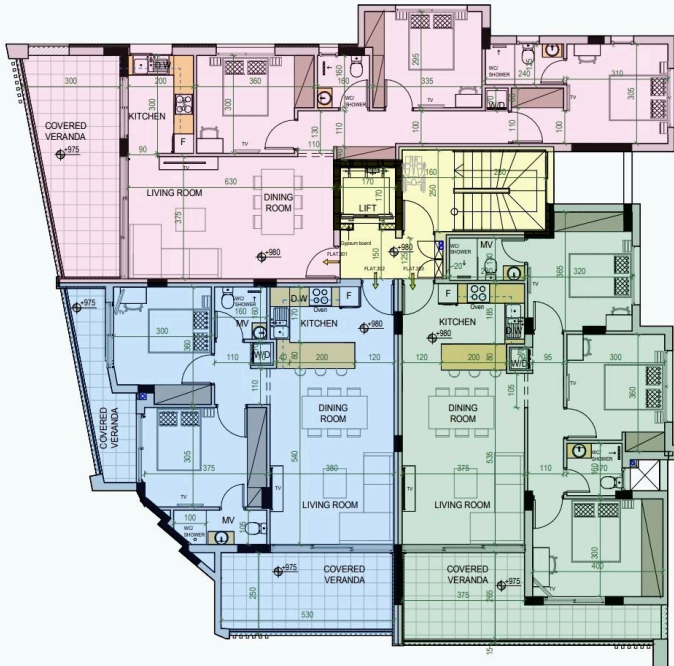


**ALTITUDES:**  
 ⊕ EXISTING  
 ⊕ SUGGESTED

ALL ALTITUDES ARE IN CENTIMETRES AND SHOW THE FINAL FLOOR LEVEL

**NOTES:**  
 F = FRIDGE  
 AP = APPARTMENT  
 O = OVEN  
 MV = MECHANICAL VENTILATION

**SECOND FLOOR PLAN**  
**SCALE 1:100**



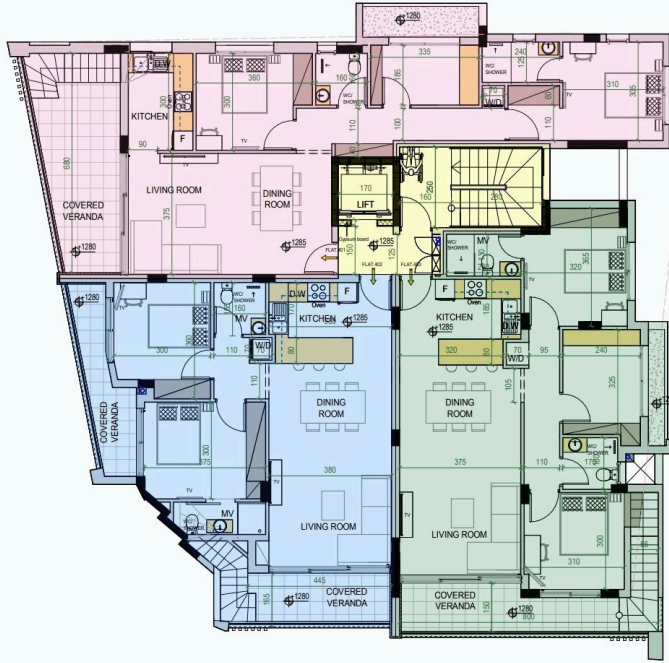
**ALTITUDES:**  
 ⊕ EXISTING  
 ⊕ SUGGESTED

ALL ALTITUDES ARE IN CENTIMETRES AND SHOW THE FINAL FLOOR LEVEL

**NOTES:**  
 F = FRIDGE  
 AP = APPARTMENT  
 O = OVEN  
 MV = MECHANICAL VENTILATION

**THIRD FLOOR PLAN**  
**SCALE 1:100**





**ALTITUDES:**  
 Ⓢ EXISTING  
 Ⓢ SUGGESTED

ALL ALTITUDES ARE IN CENTIMETRES AND SHOW THE FINAL FLOOR LEVEL.

**NOTES:**  
 F = FRIDGE  
 AP = APPOINTMENT  
 O = OVEN  
 MV = MECHANICAL VENTILATION

**FOURTH FLOOR PLAN  
 SCALE 1:100**

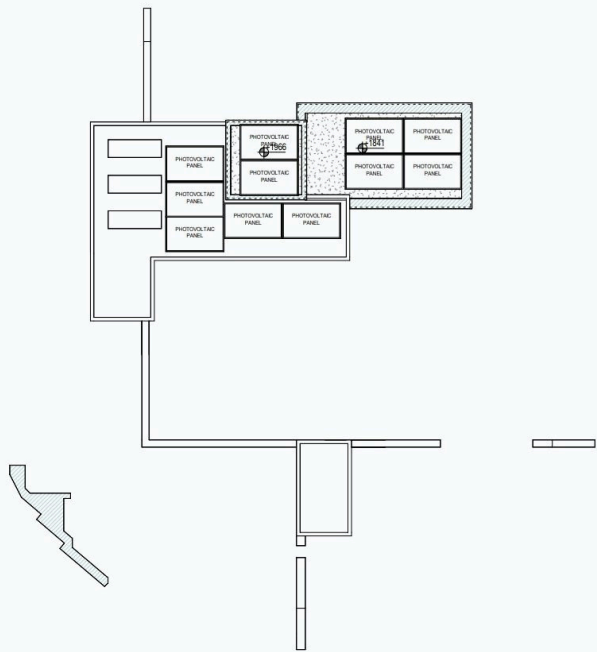


**ALTITUDES:**  
 Ⓢ EXISTING  
 Ⓢ SUGGESTED

ALL ALTITUDES ARE IN CENTIMETRES AND SHOW THE FINAL FLOOR LEVEL.

**ROOF GARDEN FLOOR PLAN  
 SCALE 1:100**





**ALTITUDES:**  
 ⊕ EXISTING  
 ⊙ SUGGESTED  
 ALL ALTITUDES ARE IN CENTIMETRES AND SHOW THE FINAL FLOOR LEVEL

**ROOF FLOOR PLAN  
 SCALE 1:100**

