



Reference 7933

2 Bed Apartment in Livadia, Larnaca

€195,000 +VAT

Livadia, Larnaca

2 Bedrooms | 2 Bathrooms | 79 m² Covered

Description

- 2 bedrooms
- 2 W/C
- Internal Area 79m²
- Covered Veranda 12m²
- Covered Parking
- Storage
- Few minutes from the New Marina & Port

Covered veranda	12 m ²
Parking spaces	1
Energy efficiency rating	A
Year of Construction	2026
Status	Off plan



Facilities

✓ Parking · Covered

✓ Storage

Features

✓ Veranda

✓ Modern design

✓ Near amenities

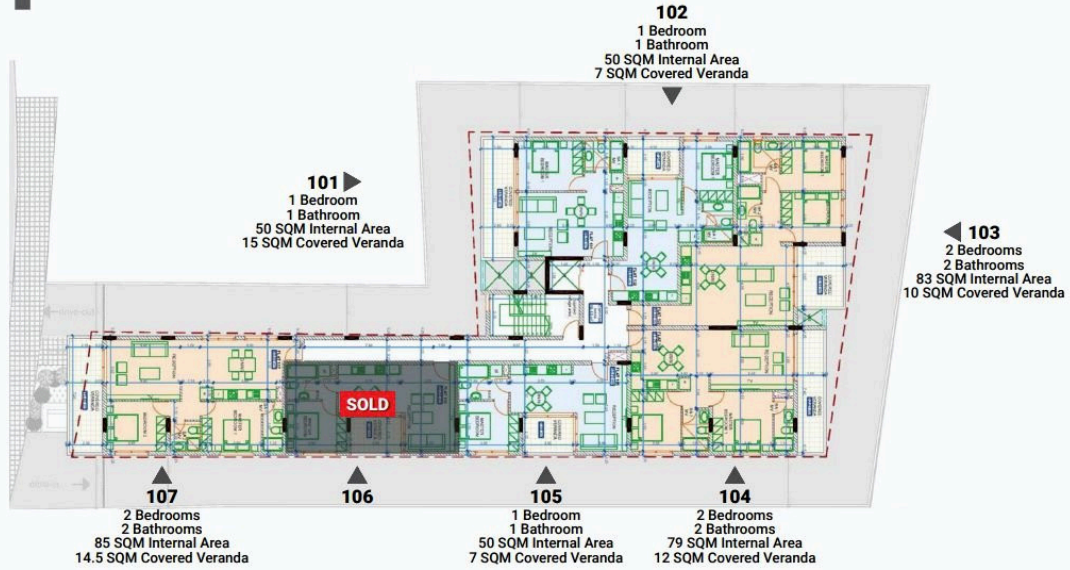
✓ Open plan

Gallery

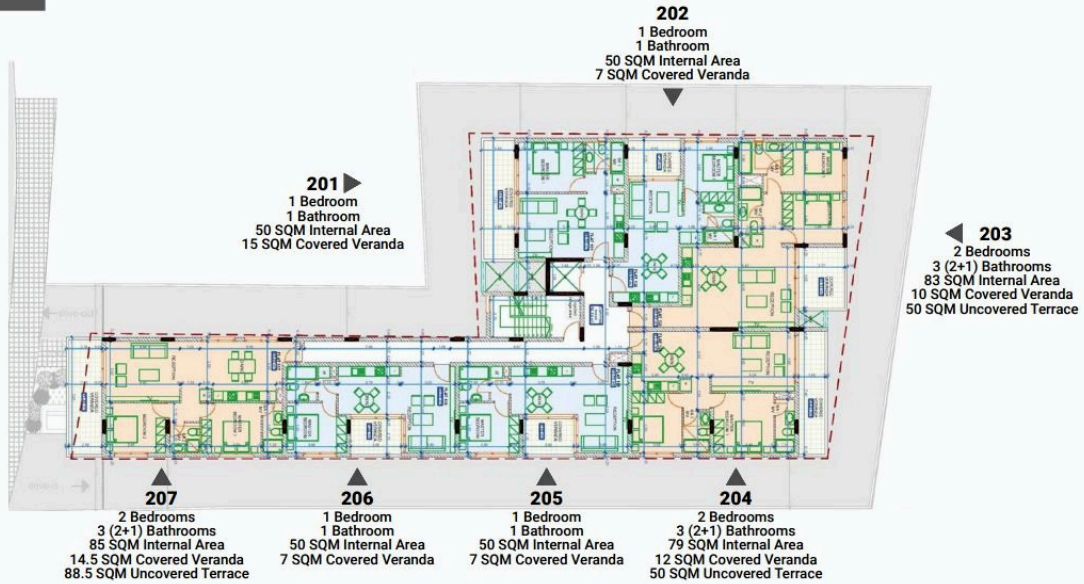


Floor plans

1ST FLOOR



2ND FLOOR



ROOF FLOOR



▲
207
88.5 SQM Uncovered
Terrace

◀ **203**
50 SQM Uncovered Terrace

◀ **204**
50 SQM Uncovered Terrace

