



Reference 7923

2 Bed Penthouse with roof garden in Pareklissia, Limassol **€345,000 +VAT**

Pareklissia, Limassol

2 Bedrooms | 2 Bathrooms | 78.5 m<sup>2</sup> Covered

## Description

- 2 bedrooms
- 2 W/C
- Internal Area 78.5m<sup>2</sup>
- Covered Veranda 20m<sup>2</sup>
- Roof Garden 59m<sup>2</sup>
- Covered Parking
- Storage
- Energy Efficiency "A"

Covered veranda	20 m <sup>2</sup>
Roof garden	59 m <sup>2</sup>
Parking spaces	1
Energy efficiency rating	A
Year of construction	2026
Status	Under construction



## Facilities

✓ Aircondition · Split system   ✓ Parking · Covered   ✓ Elevator   ✓ Storage   ✓ Solar water heater

---

## Features

✓ Guest WC   ✓ Veranda   ✓ Laminate flooring   ✓ Parquet flooring   ✓ Ceramic tiles  
✓ En suite bathroom   ✓ Modern design   ✓ Near amenities   ✓ Roof garden   ✓ Double glazing  
✓ Open plan   ✓ Thermal insulation

---

## Gallery







## Floor plans

### 1<sup>ST</sup> FLOOR

**104** ▶  
1 Bedroom  
1 Bathroom  
55 SQM Internal Area  
19 SQM Covered Veranda

**101** ▶  
2 Bedrooms  
2 Bathrooms  
78.5 SQM Internal Area  
20 SQM Covered Veranda



◀ **103**  
2 Bedrooms  
2 Bathrooms  
88 SQM Internal Area  
13 SQM Covered Veranda

◀ **102**  
2 Bedrooms  
2 Bathrooms  
78.5 SQM Internal Area  
20 SQM Covered Veranda

### 2<sup>ND</sup> FLOOR

**204** ▶  
1 Bedroom  
1 Bathroom  
55 SQM Internal Area  
19 SQM Covered Veranda

**201** ▶  
2 Bedrooms  
2 Bathrooms  
78.5 SQM Internal Area  
20 SQM Covered Veranda

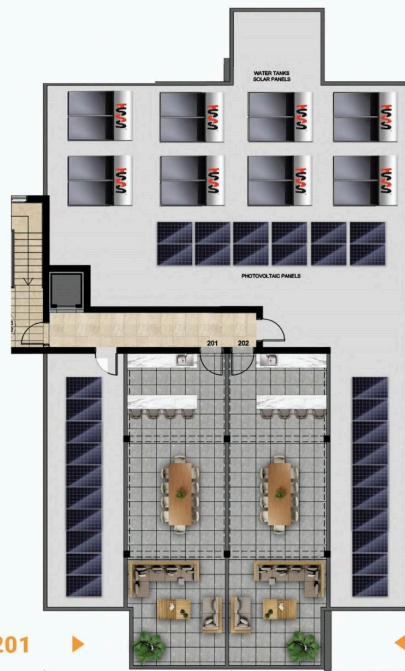


◀ **203**  
2 Bedrooms  
2 Bathrooms  
88 SQM Internal Area  
13 SQM Covered Veranda

◀ **202**  
2 Bedrooms  
2 Bathrooms  
78.5 SQM Internal Area  
20 SQM Covered Veranda



# R<sup>OO</sup>F FLOOR



201 ▶  
59 SQM Uncovered Terrace

◀ 202  
59 SQM Uncovered Terrace

