



Reference 7687

Luxury 2 Bed Apartment in Germasogeia, Limassol

€1,949,000

Germasogia, Limassol

2 Bedrooms | 3 Bathrooms | 109 m² Covered

Description

- 2 bedrooms
- 3 W/C
- Internal Area 109m²
- Covered Verandas 28m²
- Covered Parking Spaces
- Communal Swimming Pool
- Hot Tub
- Smart System
- Gym & Spa
- Underfloor Heating
- Alarm System
- Sea View

Covered veranda	28 m ²
Parking spaces	2
Energy efficiency rating	Certificate expected
Year of construction	2025
Status	Under construction



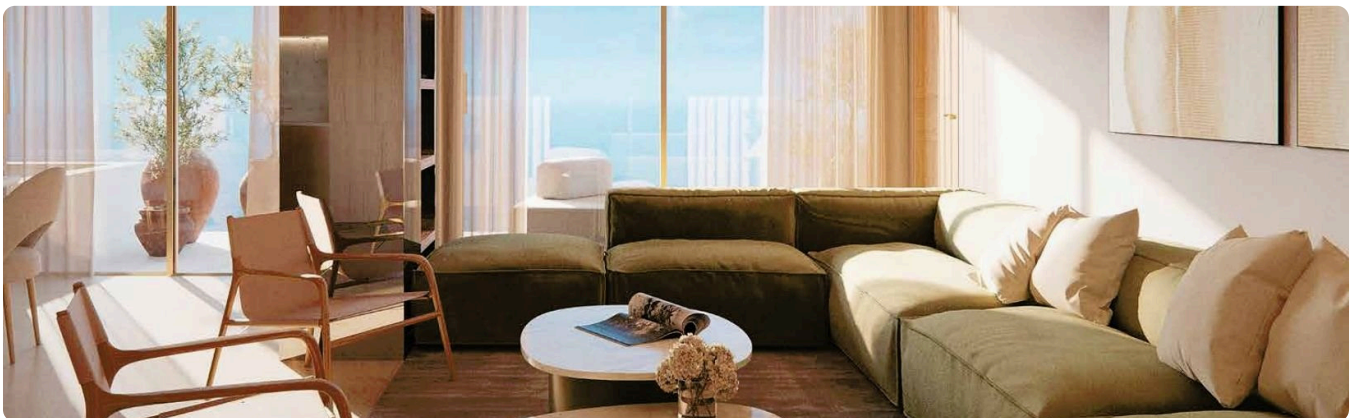
Facilities

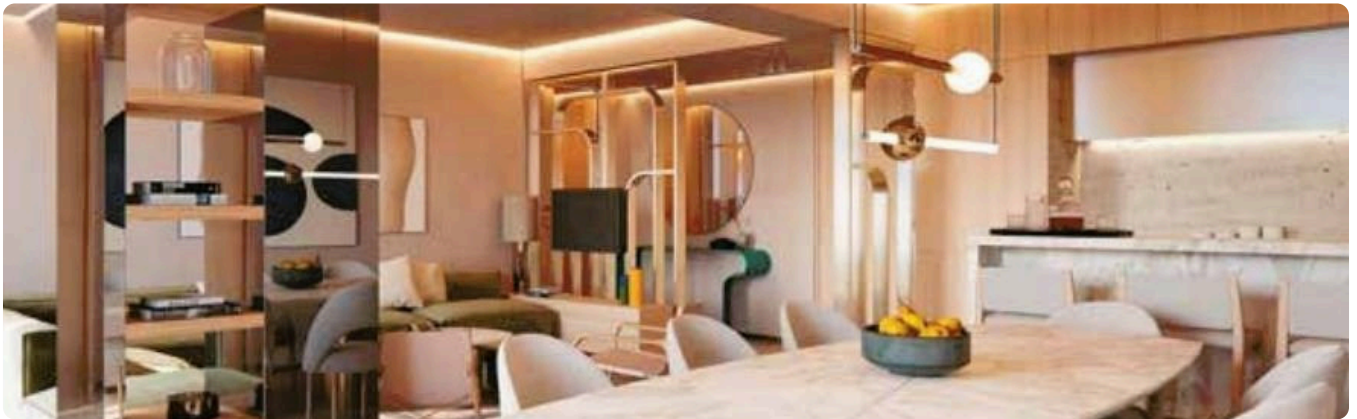
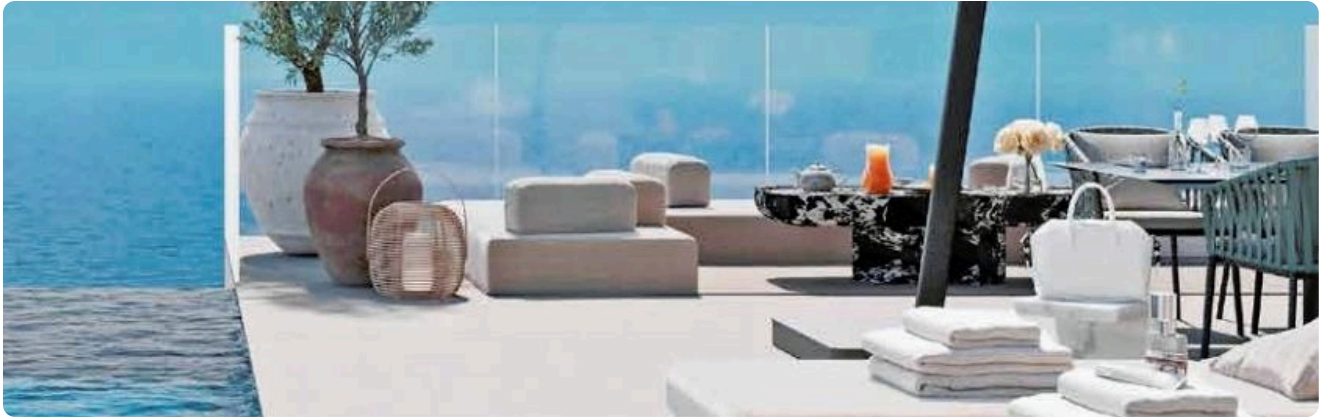
- ✓ Aircondition · Split system ✓ Heating · Underfloor ✓ Parking · Covered ✓ Indoor pool · Communal
- ✓ Gym ✓ Spa ✓ Storage
-

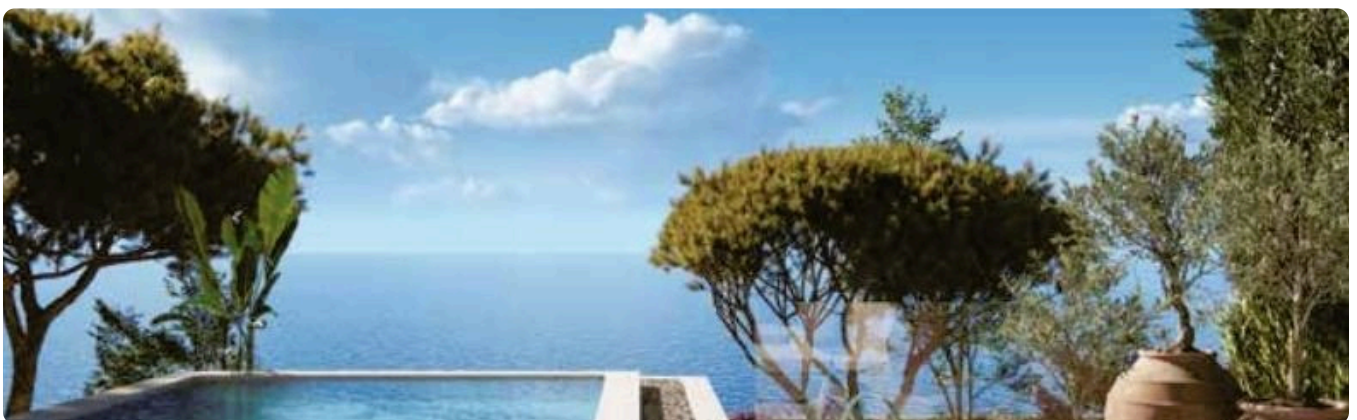
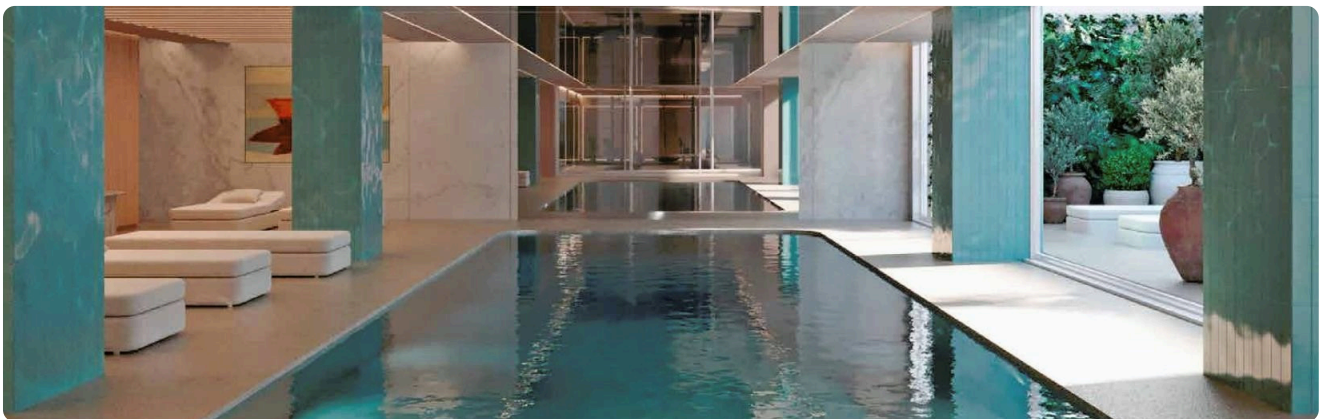
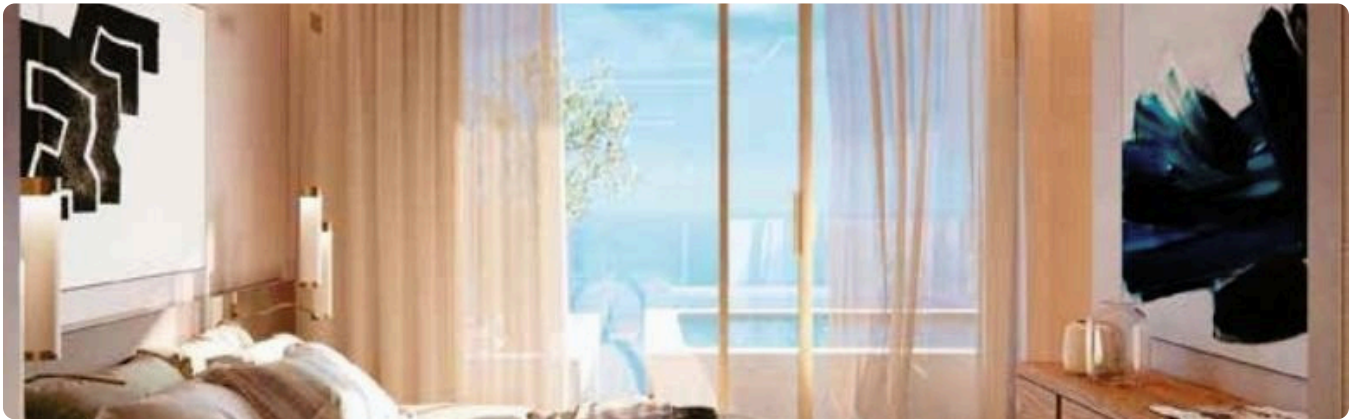
Features

- ✓ Guest WC ✓ Veranda ✓ CCTV ✓ En suite bathroom ✓ Modern design ✓ Sea view
- ✓ Near amenities ✓ Jacuzzi ✓ Alarm system ✓ Open plan ✓ Walk-in closet
- ✓ Investment opportunity ✓ Door screen ✓ Bright ✓ Combined kitchen and dining area
- ✓ Spacious rooms ✓ Smart home automation
-

Gallery

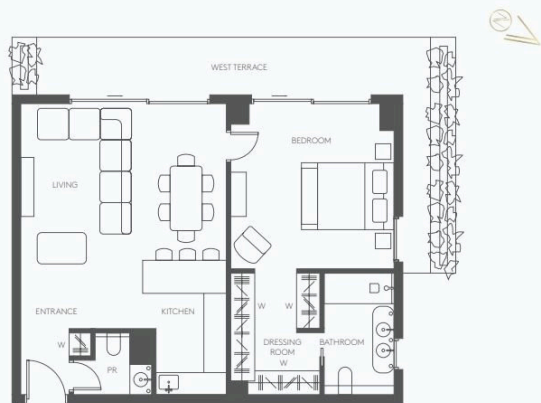






Floor plans

TYPICAL WEST TERRACE | 1 BEDROOM APARTMENT
FLOORS: 1ST | 2ND | 3RD | 4TH | 5TH | 6TH



W: Wardrobe | PR: Powder Room

TYPICAL SUNSET TERRACE | 2 BEDROOM APARTMENT
FLOORS: 1ST | 2ND | 3RD | 4TH | 5TH | 6TH



HT: Hot Tub | W: Wardrobe | WD: Washer Dryer | PR: Powder Room



TYPICAL SOUTH TERRACE | 2 BEDROOM APARTMENT

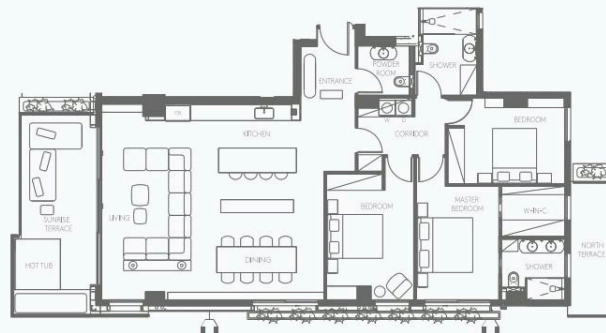
FLOORS: 1ST | 2ND | 3RD | 4TH | 5TH | 6TH



HT: Hot Tub | W: Wardrobe | WD: Washer Dryer | PR: Powder Room

TYPICAL SUNRISE TERRACE | 3 BEDROOM APARTMENT

FLOORS: 1ST | 2ND | 3RD | 4TH | 5TH | 6TH



HT: Hot Tub | W: Wardrobe | WD: Washer Dryer | PR: Powder Room

