



Reference 7406

1 Bed Ground Floor Apartment in Petrou kai Pavlou,
Limassol

€200,000 +VAT

Petrou Kai Pavlou, Limassol

1 Bedroom | 1 Bathroom | 51 m² Covered

Description

- 1 bedroom
- 1 W/C
- Internal Area 51m²
- Covered Veranda 3m²
- Uncovered Verandas 11m²
- Storage
- Energy Efficiency "A"
- Close to the beach

| | |
|--------------------------|-------------------|
| Covered veranda | 3 m ² |
| Uncovered veranda | 11 m ² |
| Parking spaces | 1 |
| Energy efficiency rating | A |
| Year of Construction | 2026 |
| Status | Off plan |



Facilities

- ✓ Aircondition · Provision
 - ✓ Storage
 - ✓ Solar water heater
 - ✓ Elevator
 - ✓ Gated complex
 - ✓ Solar photovoltaic panels, Provision
-

Features

- ✓ Veranda
 - ✓ CCTV
 - ✓ Modern design
 - ✓ Double glazing
 - ✓ Pressurized water system
 - ✓ Heart of city center
 - ✓ Ceramic tiles
 - ✓ Luxury specifications
 - ✓ Near amenities
 - ✓ Open plan
 - ✓ Door screen
 - ✓ Thermal insulation
-

Gallery

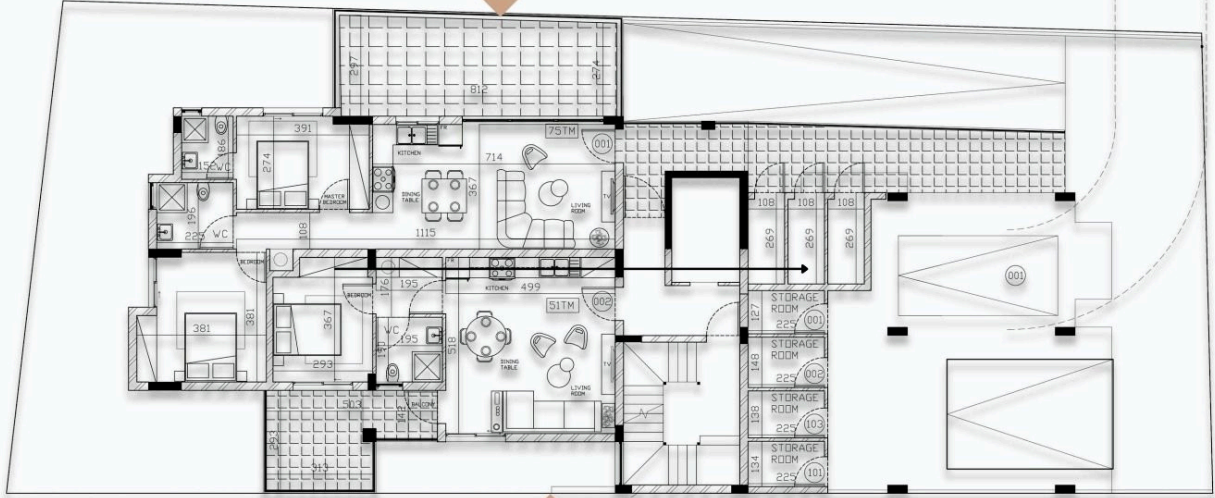




Floor plans

APARTMENT 001 - TWO BDR

Internal Area = 75m² Uncovered Veranda = 27m²



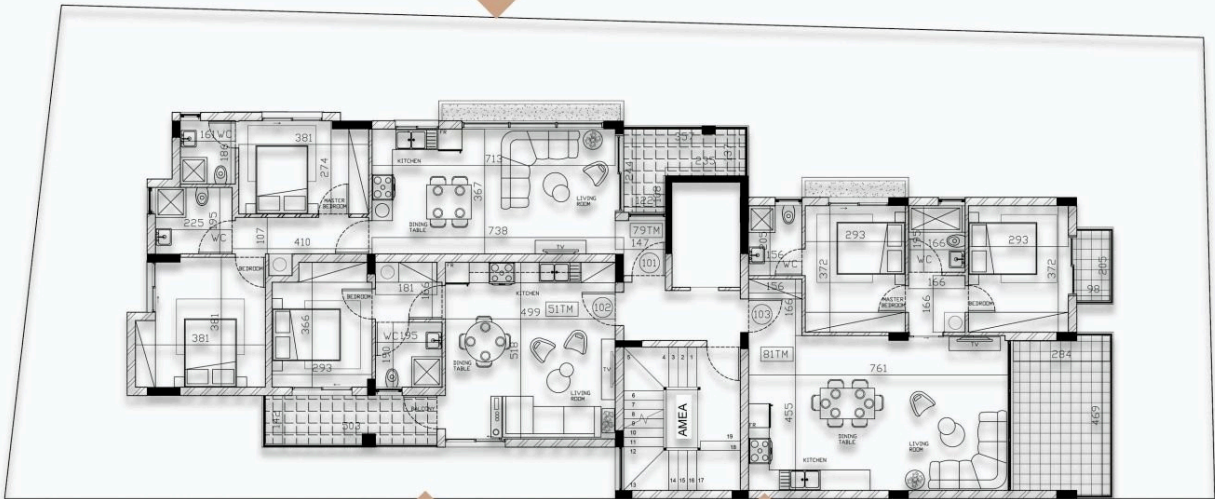
APARTMENT 002 - ONE BDR

Internal Area = 51m² Uncovered Veranda = 11m² Covered Veranda = 3m²

GROUND FLOOR

APARTMENT 101 - TWO BDR

Internal Area = 79m² Covered Veranda = 11m²



APARTMENT 102 - ONE BDR

Covered Veranda = 6m² Internal Area = 51m²

APARTMENT 103 - TWO BDR

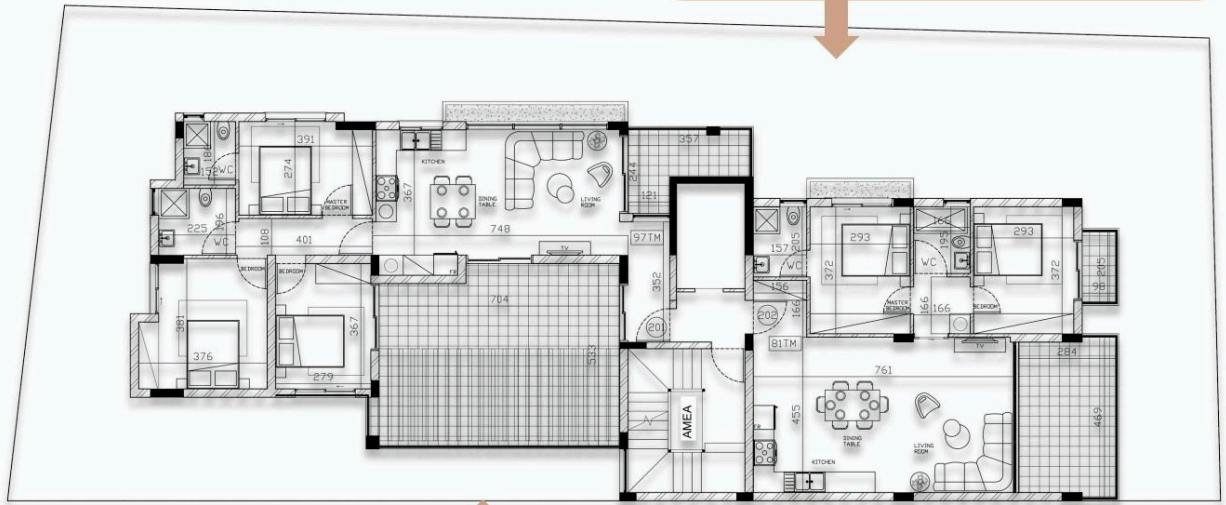
Internal Area = 81m² Covered Veranda = 16m²

FIRST FLOOR



APARTMENT 202 - TWO BDR

Internal Area = 81m² Covered Veranda = 16m²



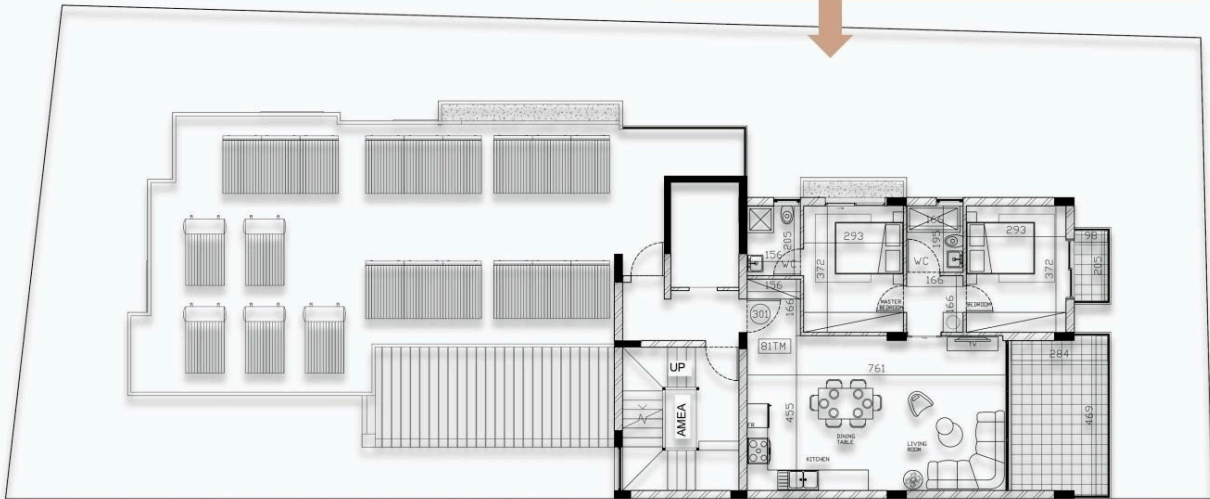
APARTMENT 201 - THREE BDR

Internal Area = 96m² Covered Veranda=17m² Uncovered Veranda= 22m²

SECOND FLOOR

APARTMENT 301 - TWO BDR

Internal Area = 81m² Covered Veranda = 16m²



THIRD FLOOR

