



Reference 6992

1 Bed Apartment in Larnaca, New Marina area

€165,000 +VAT

Livadia, Larnaca

1 Bedroom | 1 Bathroom | 50 m² Covered

Description

- 1 bedroom
- 1 W/C
- Internal Area 50m²
- Covered Veranda 10m²
- Covered Parking
- Storage
- Energy Efficiency "A"
- Photovoltaic Panels

Covered veranda	10 m ²
Parking spaces	1
Energy efficiency rating	A
Year of Construction	2026
Status	Under construction



Facilities

- ✓ Parking · Covered
 - ✓ Storage
 - ✓ Solar photovoltaic panels
-

Features

- ✓ Veranda
 - ✓ Modern design
 - ✓ Near amenities
 - ✓ Open plan
-

Gallery



Floor plans



101
1 BEDROOM
15 BATHROOMS
50 SQM INTERNAL COVERAGE
11 SQM COVERED VERANDAS

102
1 BEDROOM
15 BATHROOMS
50 SQM INTERNAL COVERAGE
11 SQM COVERED VERANDAS

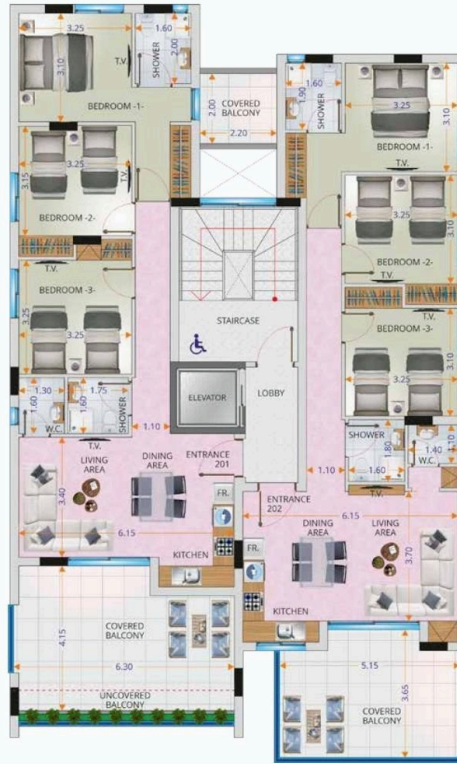
103
1 BEDROOM
1 BATHROOMS
50 SQM INTERNAL COVERAGE
10 SQM COVERED VERANDAS

104
1 BEDROOM
15 BATHROOMS
50 SQM INTERNAL COVERAGE
10 SQM COVERED VERANDAS
4 SQM UNCOVERED VERANDAS



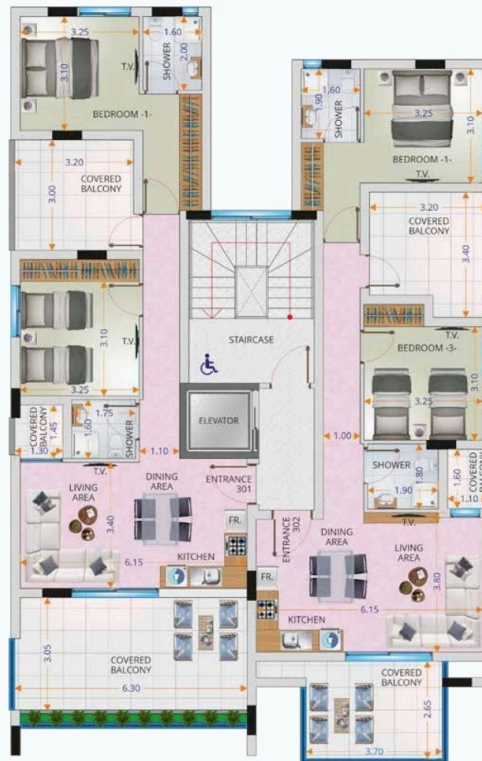
201
 3 BEDROOMS
 2.5 BATHROOMS
 90 SQM INTERNAL COVERAGE
 26 SQM COVERED VERANDAS

202
 3 BEDROOMS
 2.5 BATHROOMS
 92 SQM INTERNAL COVERAGE
 12 SQM COVERED VERANDAS
 8 SQM UNCOVERED VERANDAS



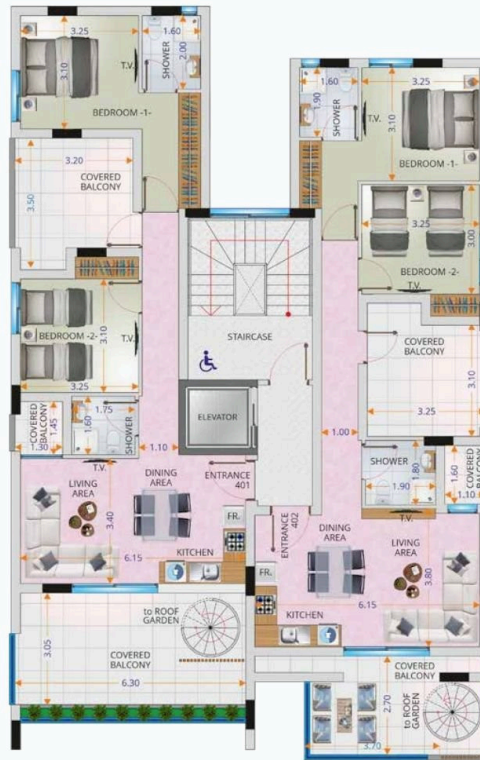
301
 2 BEDROOMS
 2 BATHROOMS
 77 SQM INTERNAL COVERAGE
 32 SQM COVERED VERANDAS

302
 2 BEDROOMS
 2 BATHROOMS
 78 SQM INTERNAL COVERAGE
 25 SQM COVERED VERANDAS



401
 2 BEDROOMS
 2 BATHROOMS
 77 SQM INTERNAL COVERAGE
 35 SQM COVERED VERANDAS

402
 2 BEDROOMS
 2 BATHROOMS
 77 SQM INTERNAL COVERAGE
 25 SQM COVERED VERANDAS



401
 ROOF TERRACE
 57 SQM

402
 ROOF TERRACE
 47 SQM

