



Reference 6983

2 Bed Penthouse with roof garden in Larnaka, New Marina **€335,000** +VAT
area

Livadia, Larnaca

2 Bedrooms | 2 Bathrooms | 79 m² Covered

Description

- 2 bedrooms
- 2 W/C
- Internal Area 79m²
- Covered Verandas 17m²
- Roof Garden 66m²
- Covered Parking
- Energy Efficiency "A"
- Photovoltaic Panels
- 600m from Larnaka New Marina
- 300m from beach

Covered veranda	17 m ²
Roof garden	66 m ²
Parking spaces	1
Energy efficiency rating	A
Year of Construction	2025
Status	Under construction



Facilities

- ✓ Parking · Covered
 - ✓ Storage
 - ✓ Solar photovoltaic panels
-

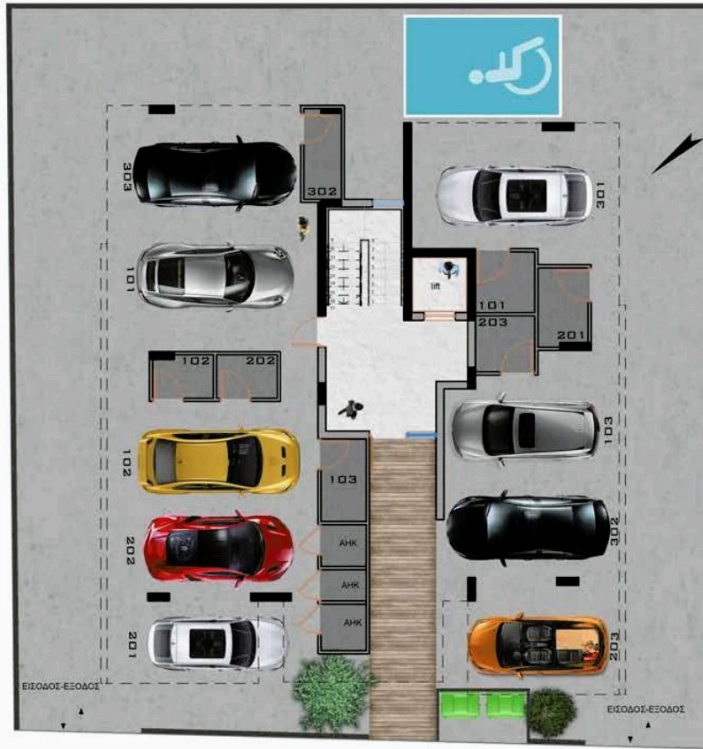
Features

- ✓ Veranda
 - ✓ Modern design
 - ✓ Roof Garden
 - ✓ Combined kitchen and dining area
 - ✓ En suite Bathroom
 - ✓ Near amenities
 - ✓ Open plan
-

Gallery



Floor plans



101
 2 BEDROOM
 2 BATHROOM
 85 SQM INTERNAL COVERAGE
 25 SQM COVERED VERANDA

102
 1 BEDROOM
 1 BATHROOM
 50 SQM INTERNAL COVERAGE
 13 SQM COVERED VERANDA

103
 2 BEDROOM
 2 BATHROOM
 79 SQM INTERNAL COVERAGE
 17 SQM COVERED VERANDA





201
 2 BEDROOM
 2 BATHROOM
 85 SQM INTERNAL COVERAGE
 25 SQM COVERED VERANDA

203
 2 BEDROOM
 2 BATHROOM
 79 SQM INTERNAL COVERAGE
 17 SQM COVERED VERANDA

202
 1 BEDROOM
 1 BATHROOM
 50 SQM INTERNAL COVERAGE
 13 SQM COVERED VERANDA



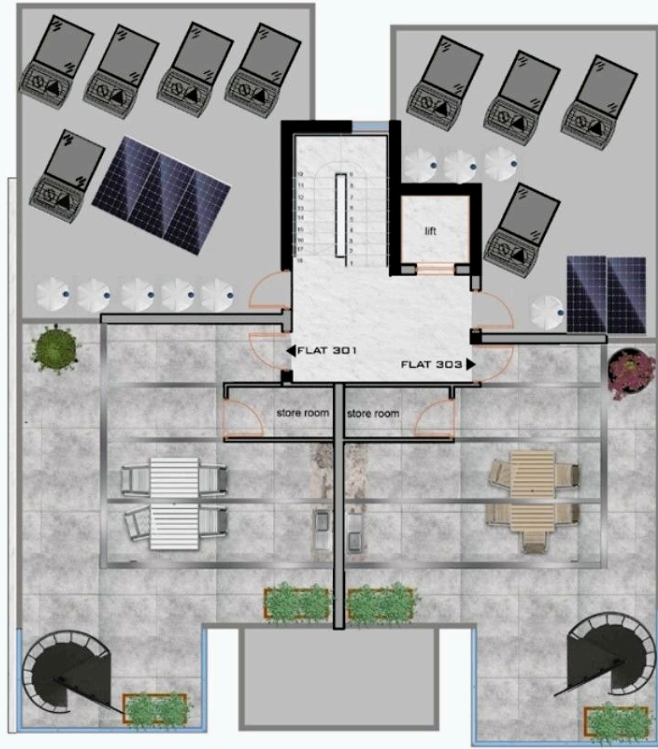
301
 2 BEDROOM
 2 BATHROOM
 85 SQM INTERNAL COVERAGE
 25 SQM COVERED VERANDA

303
 2 BEDROOM
 2 BATHROOM
 79 SQM INTERNAL COVERAGE
 17 SQM COVERED VERANDA

302
 1 BEDROOM
 1 BATHROOM
 50 SQM INTERNAL COVERAGE
 13 SQM COVERED VERANDA



301
77 SQM
ROOF TERRACE



303
74 SQM
ROOF TERRACE

