



Reference 6973

Office for rent in Germasogeia Limassol

€26,500 /month

Germasogia, Limassol

565 m² Covered

Description

- Total Covered Area 565m²
- Lobby & Common Area 84m²
- Access to high-speed highway
- Open-space and meeting rooms
- High-speed smart lifts
- Parking for residents
- Gym
- A/C
- Energy Efficiency "A"

Energy efficiency
rating

A

Status

**Under
construction**



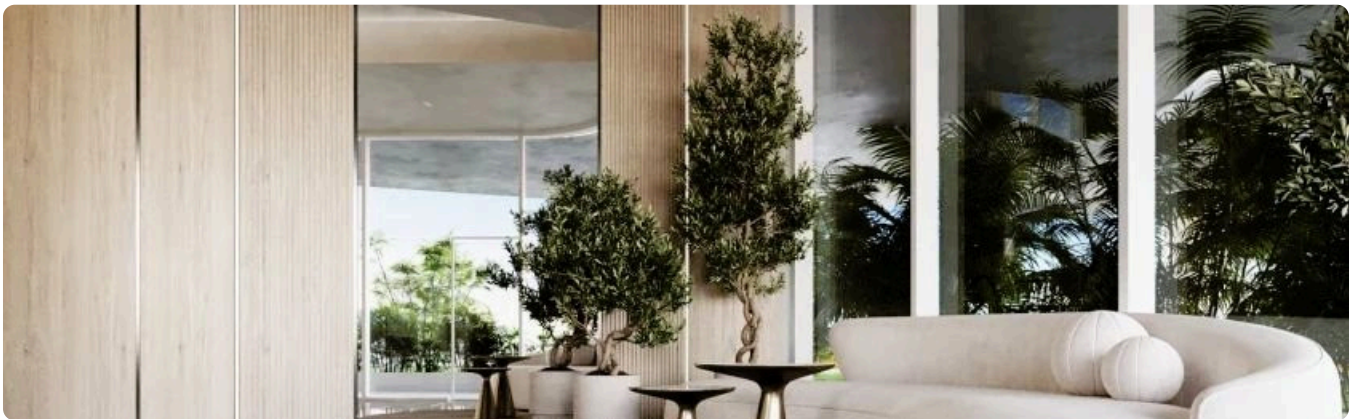
Facilities

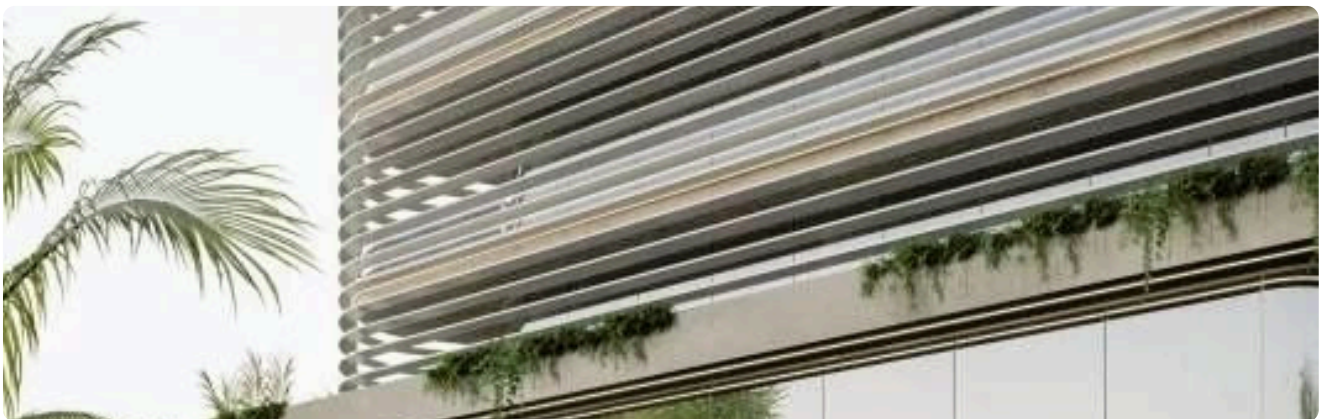
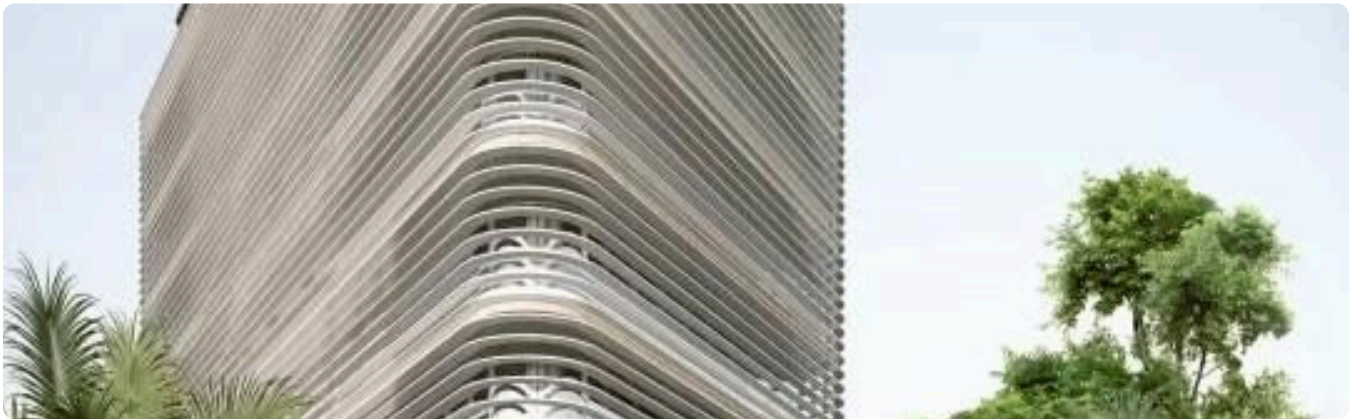
✓ Aircondition · Split system ✓ Parking · Covered ✓ Elevator ✓ Gym

Features

✓ Near amenities ✓ Easy access to highway

Gallery





Floor plans

BASEMENT



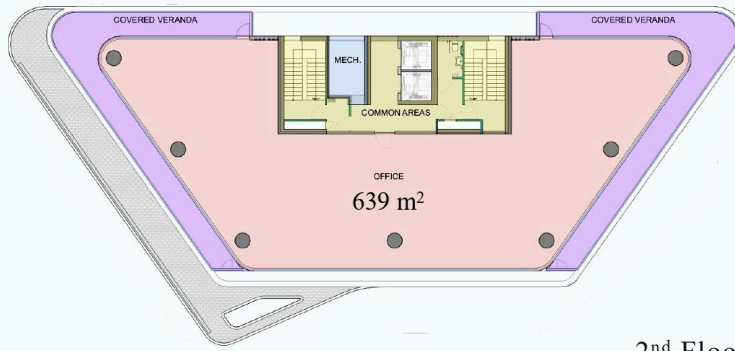
GROUND FLOOR



MEZZANINE



1st FLOOR

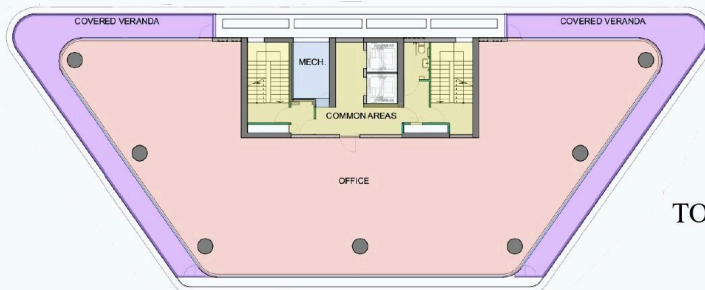


2nd Floor - 6th FLOOR



7th FLOOR

+
ROOF GARDEN AREA



TOTAL USABLE AREA 1,125 m²

