



Reference 6924

4 Bed Detached Villa in Kolossi, Limassol

€350,000 +VAT

Kolossi, Limassol

4 Bedrooms

3 Bathrooms

112 m² Covered

Description

- 4 bedrooms
- 3 W/C
- Covered Areas 112m²
- Plot Area 180m²
- Covered Parking
- Photovoltaic Panels
- Energy Efficiency "A"
- 10-minute drive to central Limassol

Plot	180 m ²
Parking spaces	2
Energy efficiency rating	A
Year of construction	2025
Status	Off plan



Facilities

- ✓ Aircondition · Split system
 - ✓ Heating · Provision
 - ✓ Parking · Covered
 - ✓ Storage
 - ✓ Solar photovoltaic panels
-

Features

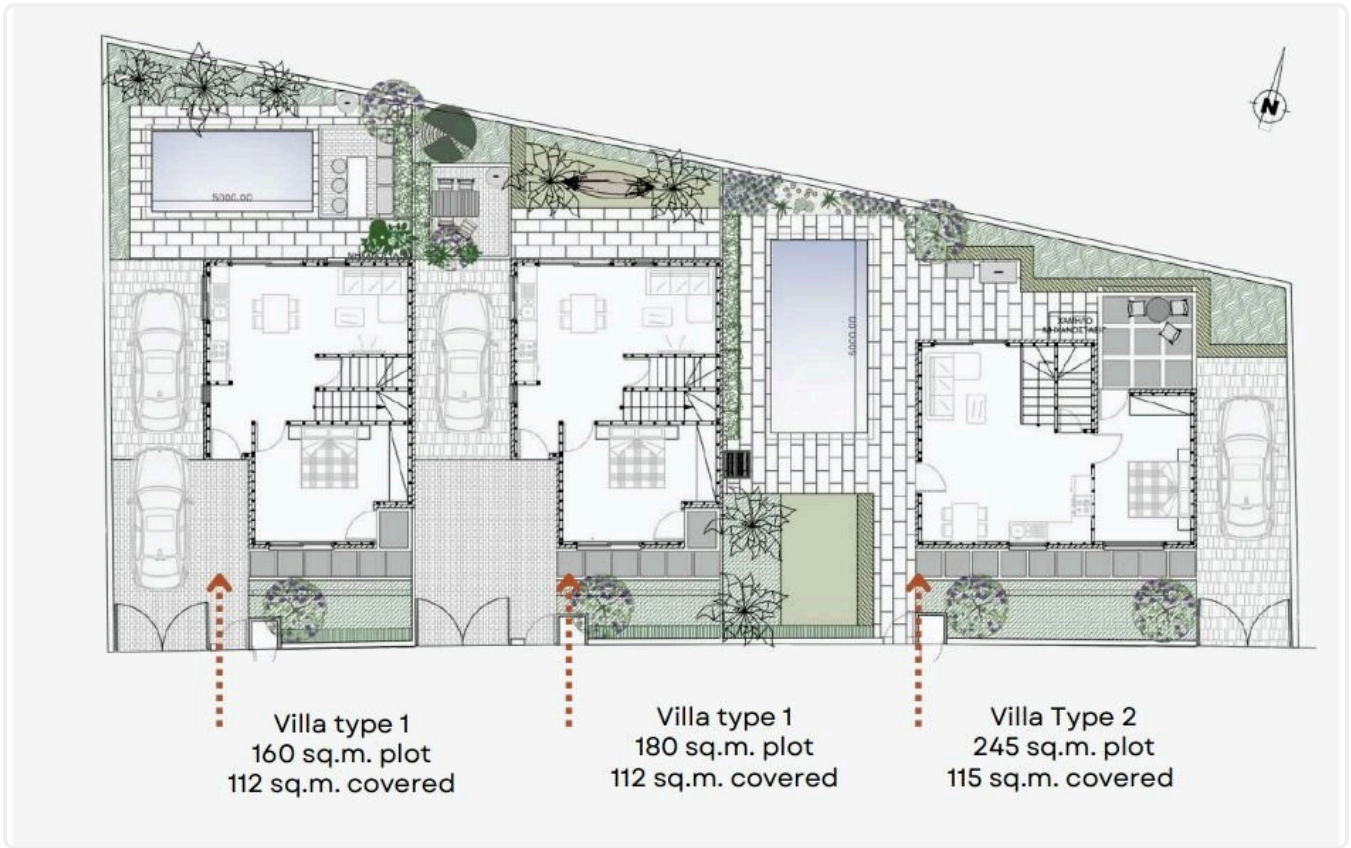
- ✓ Guest WC
 - ✓ Veranda
 - ✓ Ground floor bedroom
 - ✓ Barbeque
 - ✓ En suite bathroom
 - ✓ Modern design
 - ✓ Panoramic view
 - ✓ Near amenities
 - ✓ Guestroom
 - ✓ Laundry room
 - ✓ Open plan
 - ✓ Garden
 - ✓ Internal stairs
 - ✓ Bright
 - ✓ Combined kitchen and dining area
-

Gallery





Floor plans



villa type 1



POINT



villa type 2

