



Reference 6833

Whole Floor Office in Limassol Center, close to Molos

**€4,510,000** +VAT

Limassol Center, Limassol

2 Bathrooms | 303.5 m<sup>2</sup> Covered

## Description

- Internal Area 303.5m<sup>2</sup>
- Covered Verandas 39.8m<sup>2</sup>
- 2 W/C
- Kitchen
- Storage
- Open Plan
- Modern Design
- Sea View
- Energy Efficiency "A"
- 5-minute walk to the Limassol Marina with its posh restaurants and boutiques
- 5 minutes walk to the historical center of Limassol with its rich cultural life

Covered veranda	39.8 m <sup>2</sup>
Energy efficiency rating	A
Year of construction	2028
Status	Off plan



## Facilities

✓ Aircondition · Provision    ✓ Elevator

---

## Features

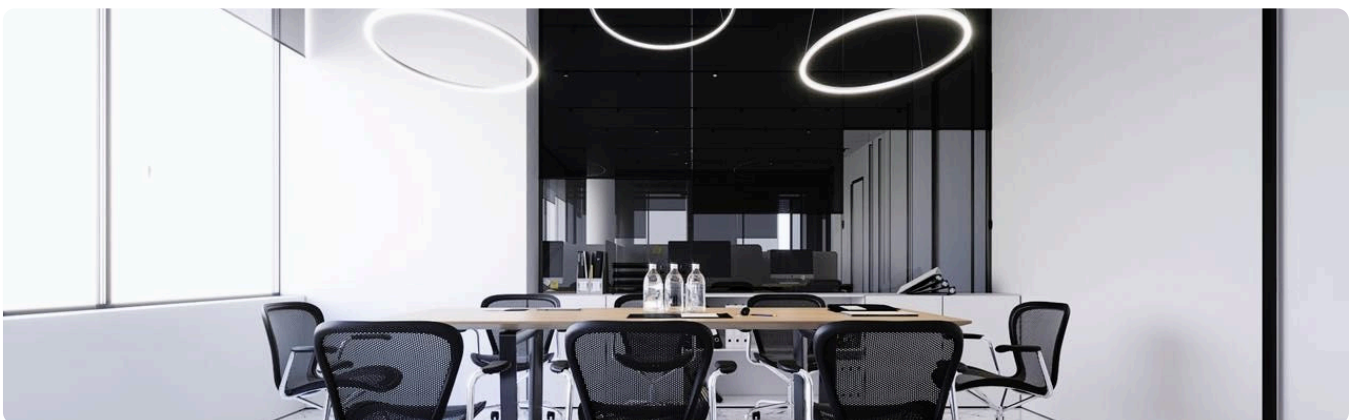
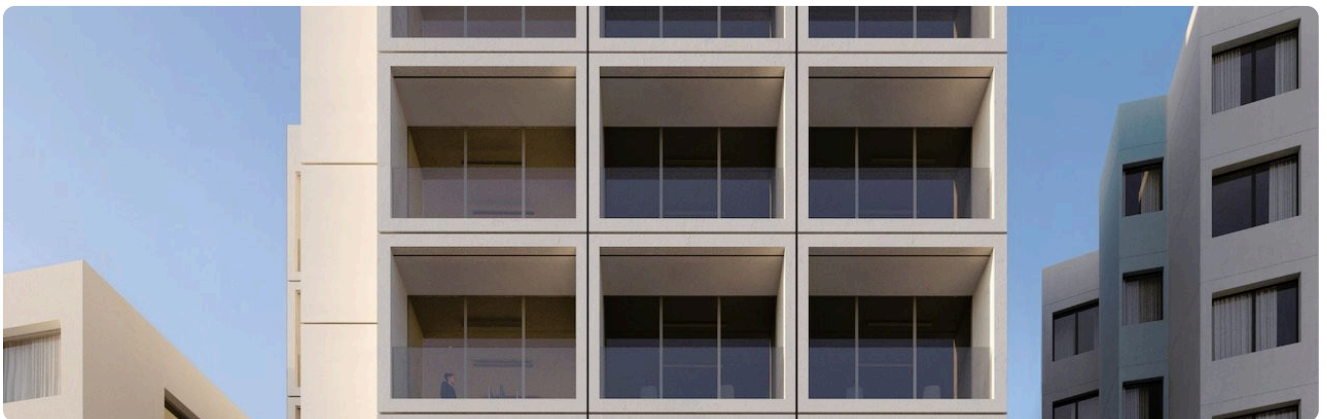
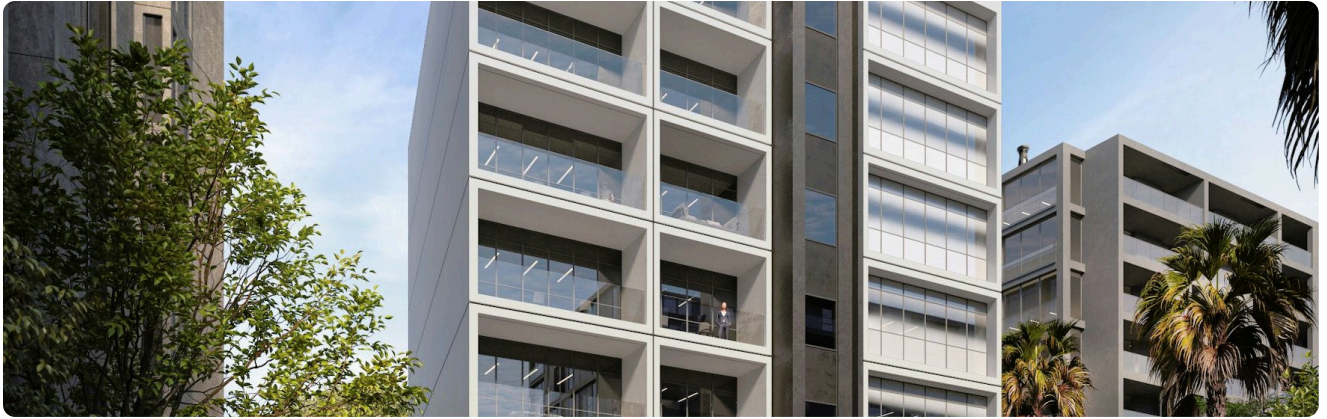
✓ Marble flooring    ✓ Ceramic tiles    ✓ Double glazing    ✓ Heart of city center  
✓ Thermal insulation    ✓ Near amenities    ✓ High ceilings    ✓ Sea view    ✓ Veranda  
✓ Server room

---

## Gallery



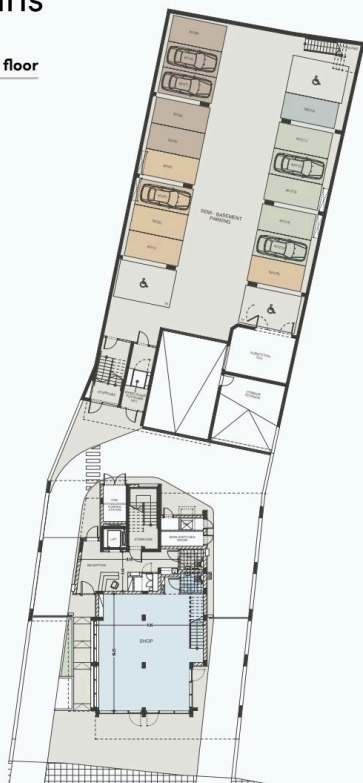




Floor plans

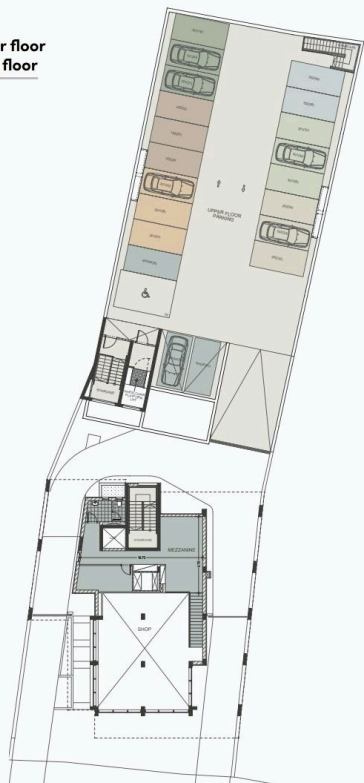
floor plans

Ground & semi  
basement parking floor



Mezzanine & upper floor  
basement parking floor

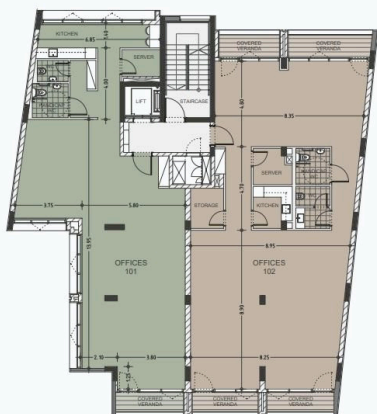
UNIT N°	TOTAL AREA M²
S001	179.95



floor plans

1st floor

UNIT N°	TOTAL AREA M²
101	149.20
102	193.80



2nd floor

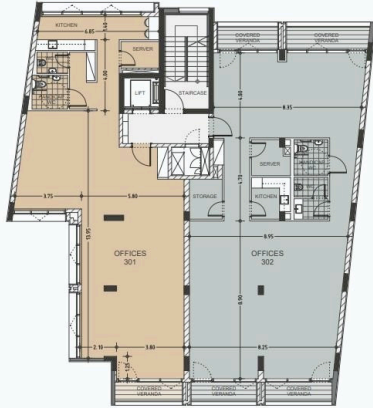
UNIT N°	TOTAL AREA M²
201	149.20
202	193.80



## floor plans

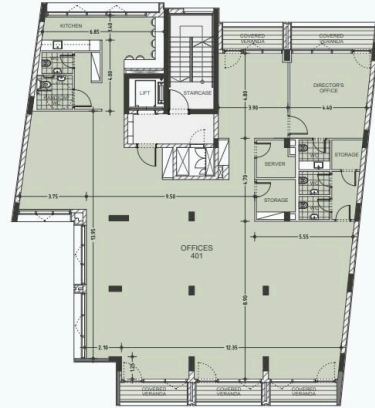
### 3rd floor

UNIT N°	TOTAL AREA M²
301	149.20
302	193.80



### 4th floor

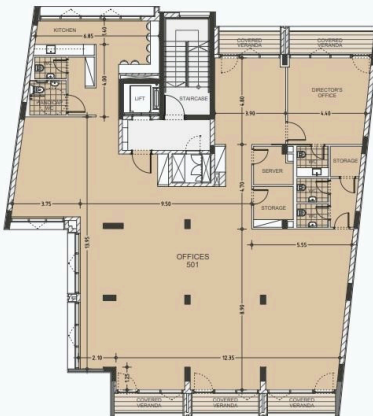
UNIT N°	TOTAL AREA M²
401	343.30



## floor plans

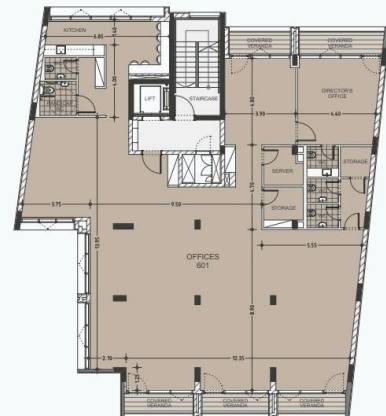
### 5th floor

UNIT N°	TOTAL AREA M²
501	343.30



### 6th floor

UNIT N°	TOTAL AREA M²
601	428.90



[illegible]