



Reference 6829

Office in Limassol Center, close to Molos

€1,900,000 +VAT

Limassol Center, Limassol

2 Bathrooms | 164.7 m² Covered

Description

- Internal Area 164.7m²
- Covered Veranda 29.1m²
- 2 W/C
- Kitchen
- Storage
- Open Plan
- Modern Design
- Sea View
- Energy Efficiency "A"
- 5-minute walk to the Limassol Marina with its posh restaurants and boutiques
- 5 minutes walk to the historical center of Limassol with its rich cultural life

Covered veranda	29.1 m ²
Energy efficiency rating	A
Year of construction	2028
Status	Off plan



Facilities

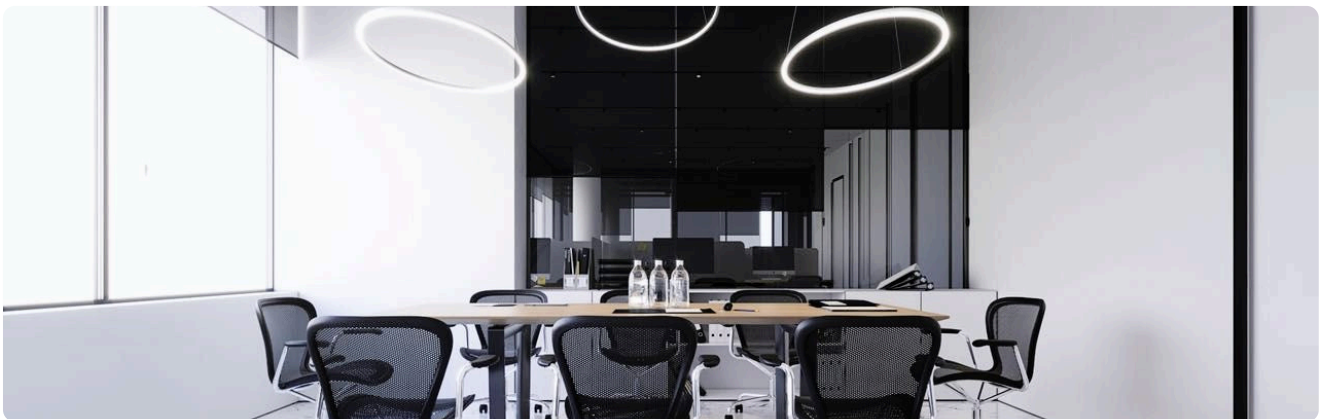
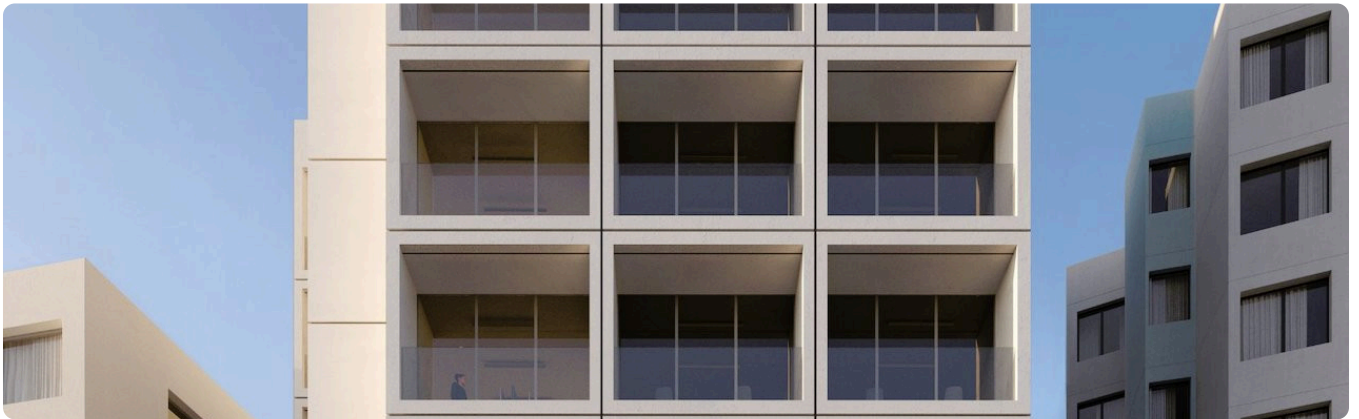
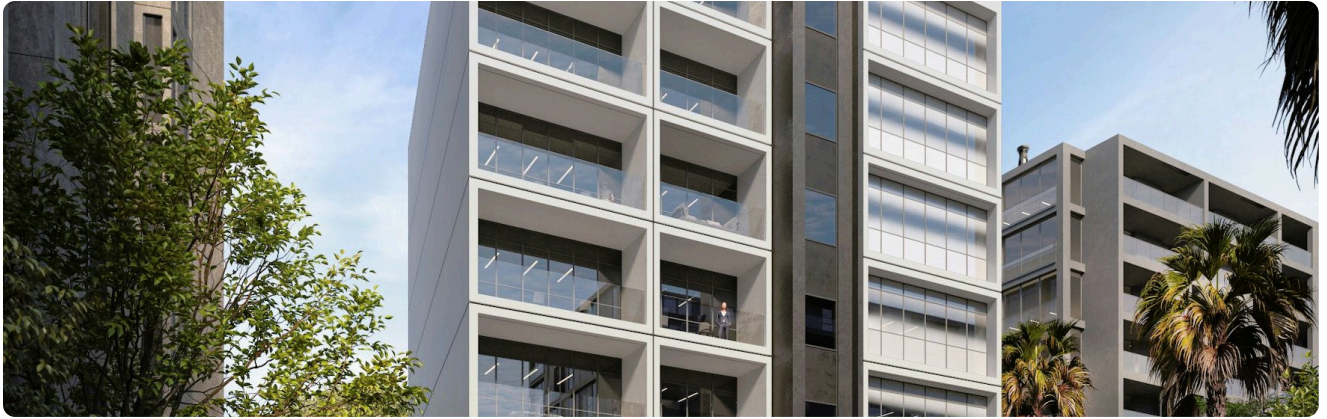
✓ Aircondition · Provision ✓ Elevator

Features

✓ Marble flooring ✓ Ceramic tiles ✓ Double glazing ✓ Heart of city center
✓ Thermal insulation ✓ Near amenities ✓ High ceilings ✓ Sea view ✓ Veranda
✓ Server room

Gallery

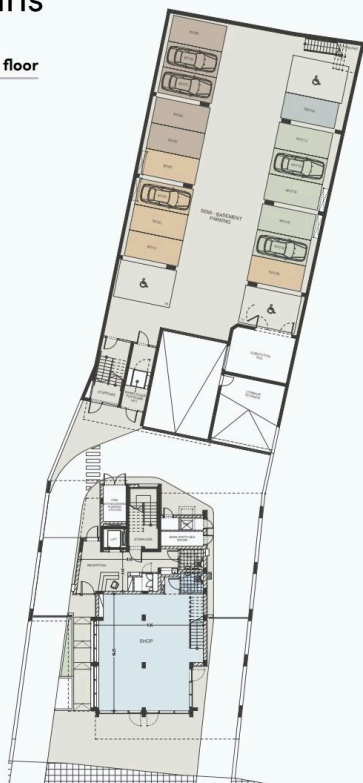




Floor plans

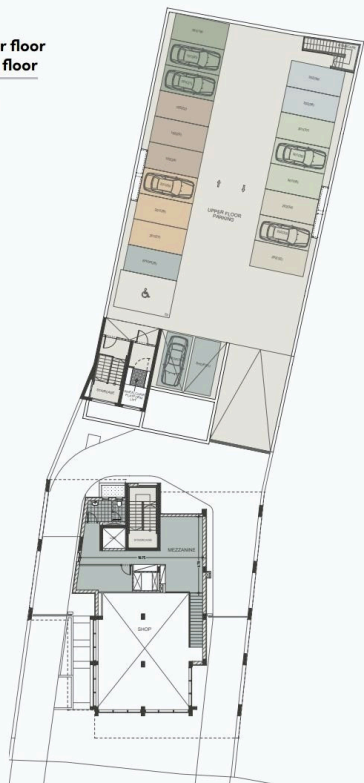
floor plans

Ground & semi
basement parking floor



Mezzanine & upper floor
basement parking floor

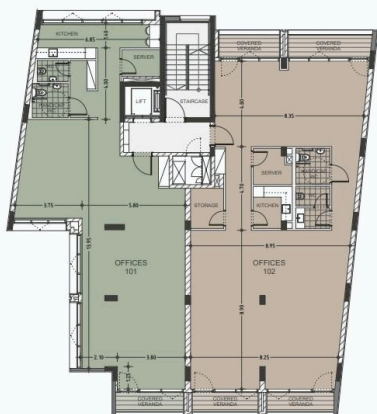
UNIT N°	TOTAL AREA M²
S001	179.95



floor plans

1st floor

UNIT N°	TOTAL AREA M²
101	149.20
102	193.80



2nd floor

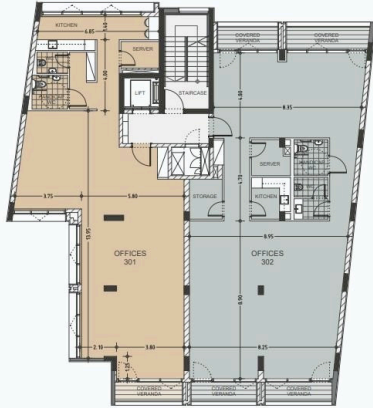
UNIT N°	TOTAL AREA M²
201	149.20
202	193.80



floor plans

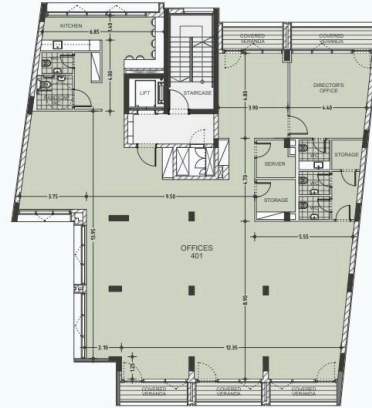
3rd floor

UNIT N°	TOTAL AREA M²
301	149.20
302	193.80



4th floor

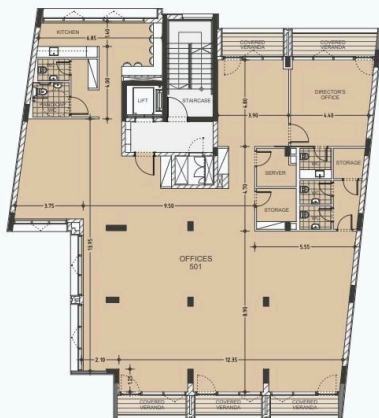
UNIT N°	TOTAL AREA M²
401	343.30



floor plans

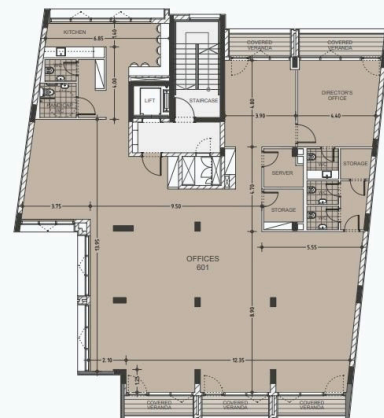
5th floor

UNIT N°	TOTAL AREA M²
501	343.30



6th floor

UNIT N°	TOTAL AREA M²
601	428.90



[illegible]