

Reference 6772

1 Bed Apartment in Panthea area, Limassol

€219,000 +VAT

Panthea, Limassol

1 Bedroom | 1 Bathroom | 50 m² Covered

Description

- 1 bedroom
- 1 W/C
- Internal Area 50m²
- Covered Veranda 17m²
- Covered Parking
- Storage
- Photovoltaic Panels
- Sea View

Covered veranda	17 m ²
Parking spaces	1
Energy efficiency rating	Certificate expected
Year of construction	2026
Status	Off plan



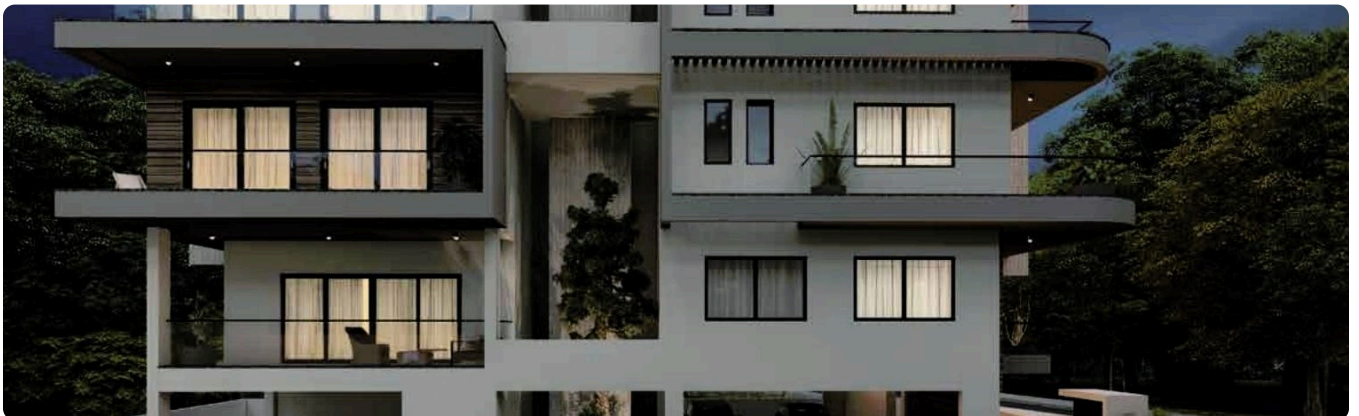
Facilities

- ✓ Aircondition · Provision
 - ✓ Parking · Covered
 - ✓ Storage
 - ✓ Solar water heater
 - ✓ Solar photovoltaic panels
-

Features

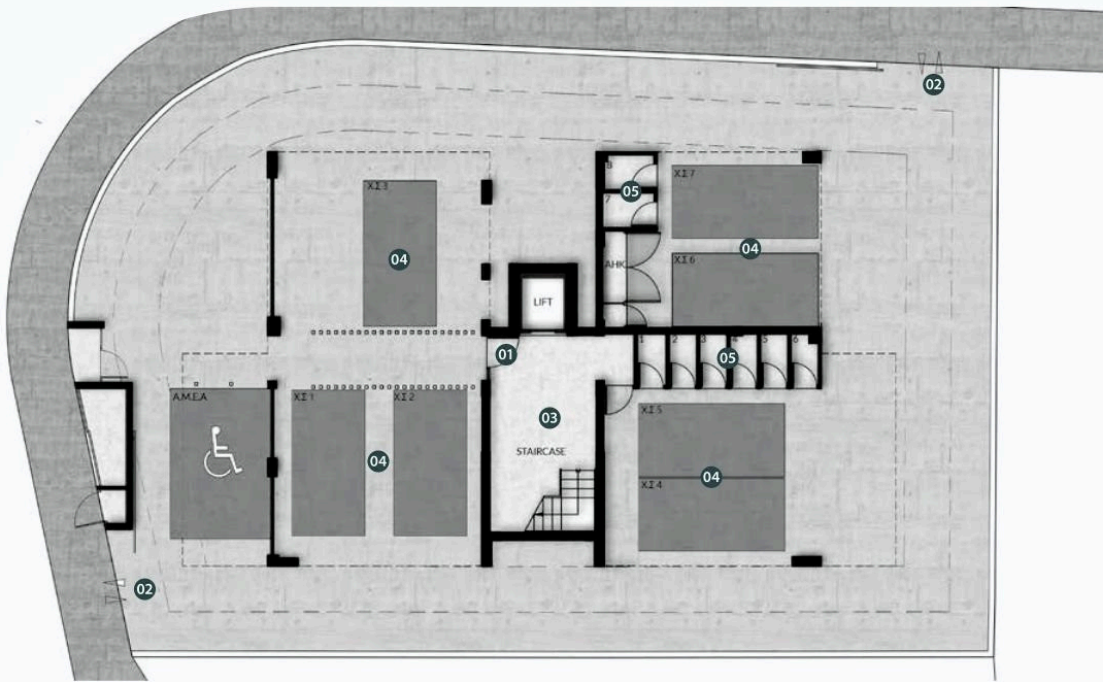
- ✓ Veranda
 - ✓ Laminate flooring
 - ✓ Modern design
 - ✓ Sea view
 - ✓ Near amenities
 - ✓ Double glazing
 - ✓ Open plan
 - ✓ Pressurized water system
 - ✓ Spacious rooms
 - ✓ Thermal insulation
-

Gallery





Floor plans



01 - Building Entrance | 02 - Vehicle Entry - Exit | 03 - Lobby | 04 - Parking | 05 - Storage Area



First Floor



Second Floor



Third Floor



Roof Terrace

