



Reference 6334

5 Bed Detatched Villa with swimming pool in
Germasogeia, Limassol

€3,450,000 +VAT

Germasogia, Limassol

5 Bedrooms | 7 Bathrooms | 356 m² Covered

Description

- 5 bedrooms
- 7 W/C
- Internal Area 356m²
- Basement 212m²
- Covered Verandas 82m²
- Uncovered Verandas 75m²
- Plot Area 922m²
- Storage
- Covered Parking
- Overflow Swimming Pool
- Office
- Underfloor Heating
- Video Entry System
- Lift

| | |
|--------------------------|----------------------|
| Plot | 922 m ² |
| Covered veranda | 82 m ² |
| Uncovered veranda | 75 m ² |
| Parking spaces | 3 |
| Energy efficiency rating | Certificate expected |
| Year of construction | 2026 |
| Status | Off plan |



Facilities

- ✓ Aircondition · Central system
 - ✓ Heating · Underfloor
 - ✓ Parking · Covered
 - ✓ Pool · Private, overflow
 - ✓ Elevator
 - ✓ Gym
 - ✓ Storage
 - ✓ Landscaped garden
 - ✓ Solar water heater
-

Features

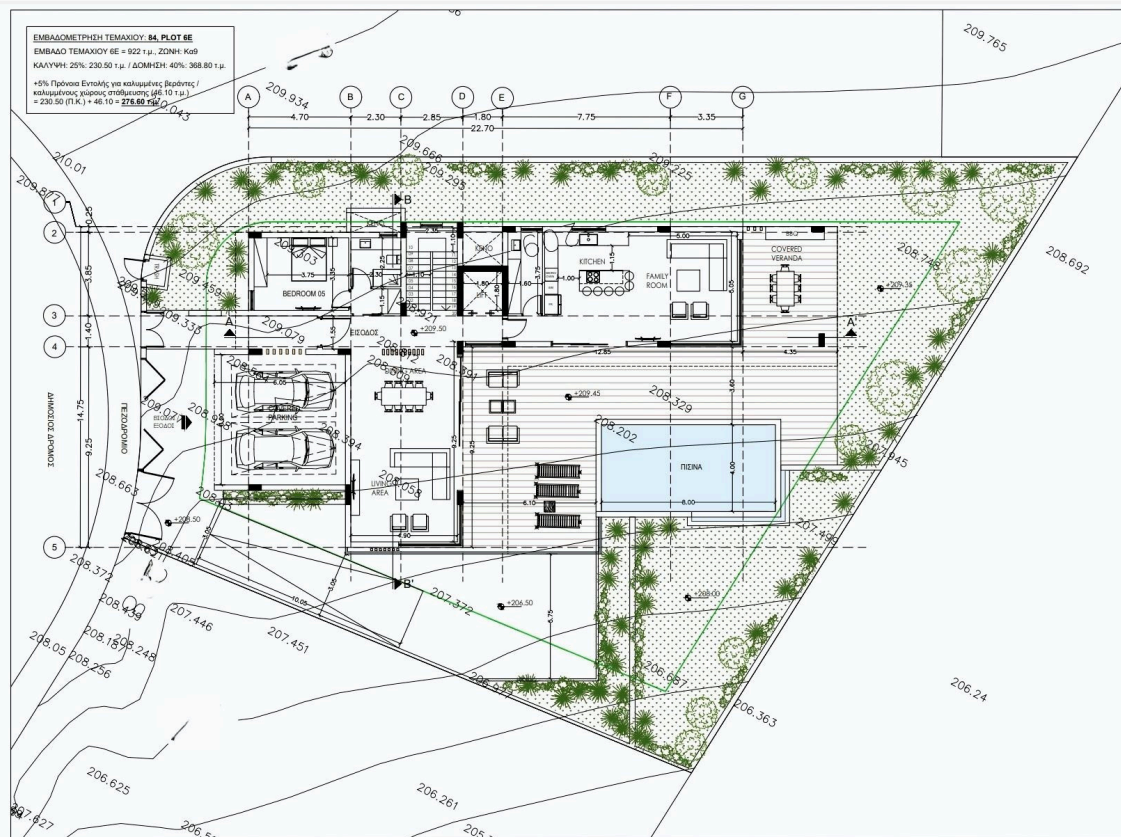
- ✓ Guest WC
 - ✓ Veranda
 - ✓ Ground floor bedroom
 - ✓ Granite countertops
 - ✓ En suite bathroom
 - ✓ Luxury specifications
 - ✓ Modern design
 - ✓ Sea view
 - ✓ Near amenities
 - ✓ Office
 - ✓ Laundry room
 - ✓ Marble stairs
 - ✓ Double glazing
 - ✓ Garden
 - ✓ Pressurized water system
 - ✓ Play room
 - ✓ Shutters, electric
 - ✓ Combined kitchen and dining area
 - ✓ Separate dining area
 - ✓ Shower
-

Gallery

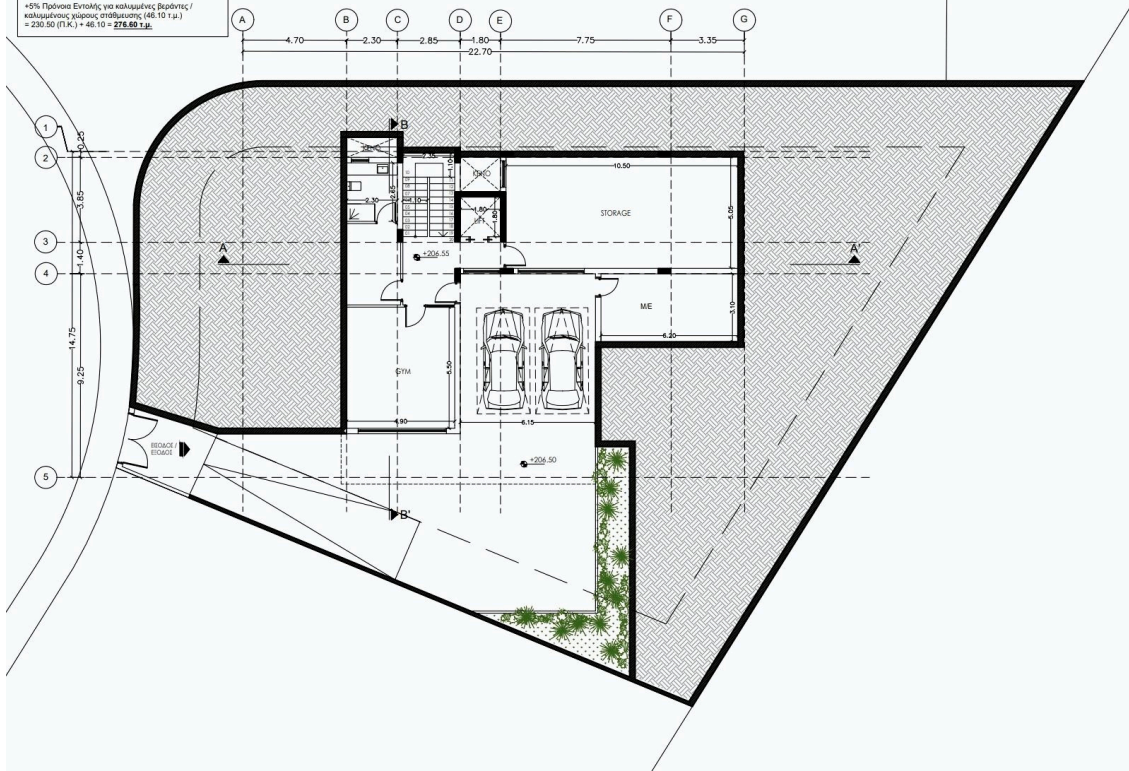




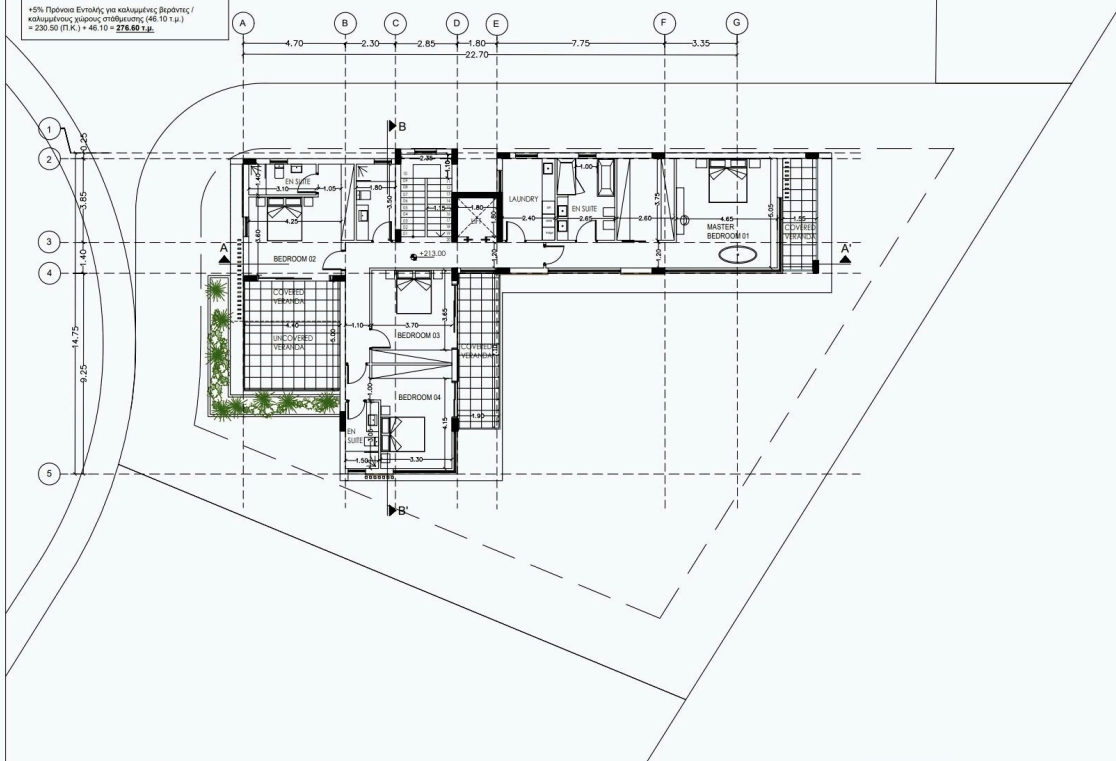
Floor plans



ΕΜΒΑΔΟΜΕΤΡΗΤΗ ΤΕΜΑΧΙΟΥ: 84, PLOT 6E
ΕΜΒΑΔΟ ΤΕΜΑΧΙΟΥ 6E = 922 τ.μ. ΖΩΝΗ: Καθ
ΚΑΛΥΨΗ: 25%: 230.50 τ.μ. / ΔΟΜΗΣΗ: 40%: 368.80 τ.μ.
+5% Πρόσθετο Επιτόκιο για κακοκτιστές βιρώτες /
κακοκτισμένες χώρους στάθμευσης (46.10 τ.μ.)
= 230.50 (Γ.Κ.) + 46.10 = **276.60 τ.μ.**



ΕΜΒΑΔΟΜΕΤΡΗΤΗ ΤΕΜΑΧΙΟΥ: 84, PLOT 6E
ΕΜΒΑΔΟ ΤΕΜΑΧΙΟΥ 6E = 922 τ.μ. ΖΩΝΗ: Καθ
ΚΑΛΥΨΗ: 25%: 230.50 τ.μ. / ΔΟΜΗΣΗ: 40%: 368.80 τ.μ.
+5% Πρόσθετο Επιτόκιο για κακοκτιστές βιρώτες /
κακοκτισμένες χώρους στάθμευσης (46.10 τ.μ.)
= 230.50 (Γ.Κ.) + 46.10 = **276.60 τ.μ.**



ΕΜΒΑΣΜΕΤΡΙΚΗ ΤΕΜΑΧΙΟΥ: **84_PLOT 6E**
ΕΜΒΑΣΟ ΤΕΜΑΧΙΟΥ 6E = 922 τ.μ., ΖΩΝΗ: Κω9
ΚΑΛΥΨΗ: 25%: 230.50 τ.μ. / ΔΟΜΗΣΗ: 40%: 368.80 τ.μ.
+5% Πρόσθετο Έντολος για κακοκτενές θρύοντες /
κακοκτενές κλάδος σπάδων (148.10 τ.μ.)
= 230.50 (Γ.Κ.) + 48.10 = **278.60 τ.μ.**

