



Reference 5984

Seafront 4 Bed Apartment in Limassol, close to Marina **€5,600,000 +VAT**

Limassol Marina, Limassol

4 Bedrooms | 4 Bathrooms | 254 m² Covered

Description

- 4 bedrooms
- 4 W/C
- Internal Area 254m²
- Covered Verandas 98m²
- Covered Parking
- Communal Indoor & Outdoor Swimming Pool
- Gym & Sauna
- Sea View
- 24h Services
- Close to several amenities
- Energy Efficiency "A"

Covered veranda	98 m ²
Uncovered veranda	3 m ²
Parking spaces	2
Energy efficiency rating	A
Year of construction	2026
Status	Under construction



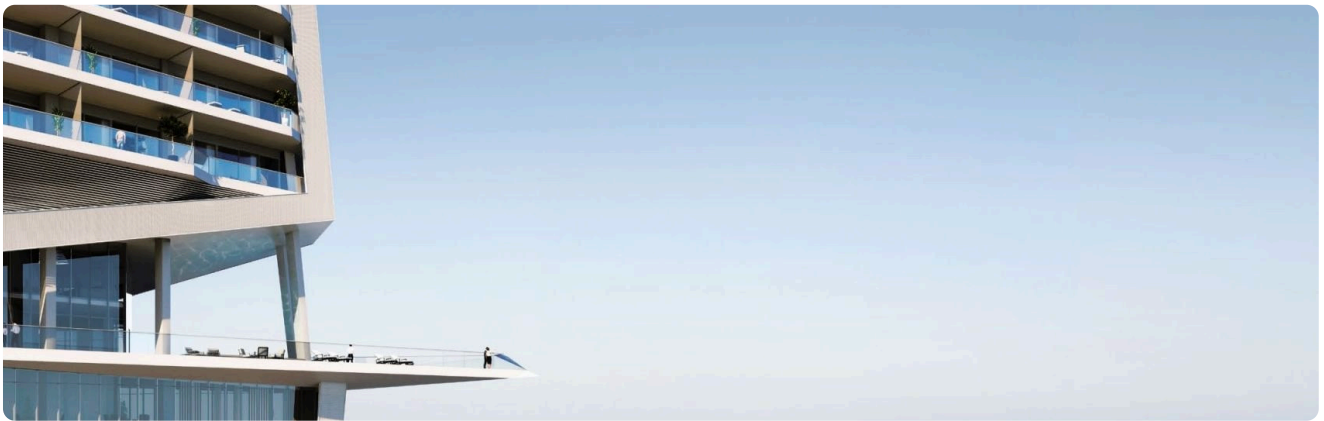
Facilities

✓ Parking · Covered ✓ Pool · Communal ✓ Indoor pool · Communal ✓ Gym ✓ Sauna

Features

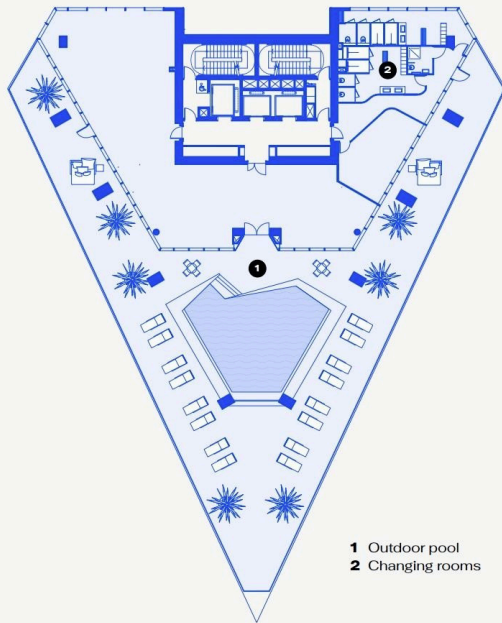
✓ Guest WC ✓ Veranda ✓ En suite bathroom ✓ Luxury specifications ✓ Modern design
✓ Sea view ✓ Sea front ✓ Near amenities ✓ Open plan ✓ Combined kitchen and dining area
✓ Spacious rooms

Gallery

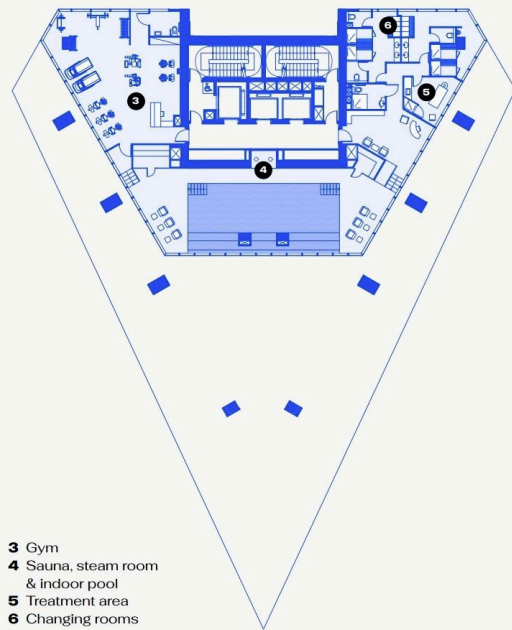




Floor plans



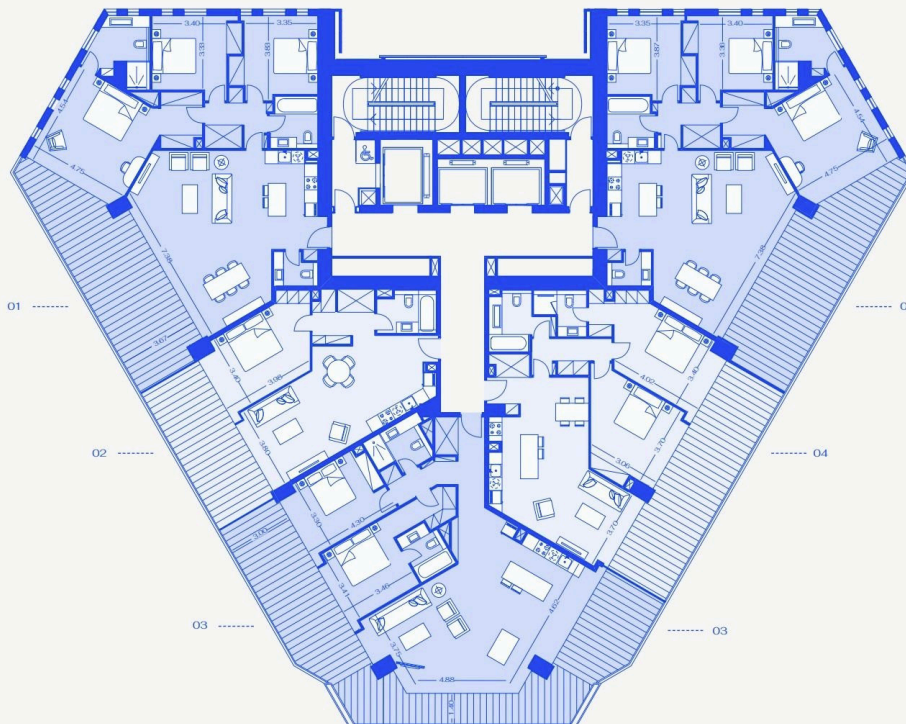
- 1 Outdoor pool
- 2 Changing rooms



- 3 Gym
- 4 Sauna, steam room & indoor pool
- 5 Treatment area
- 6 Changing rooms

LEVELS 17–18

Floorplans and dimensions displayed are indicative and may vary from level to level.



LEVELS 20–24

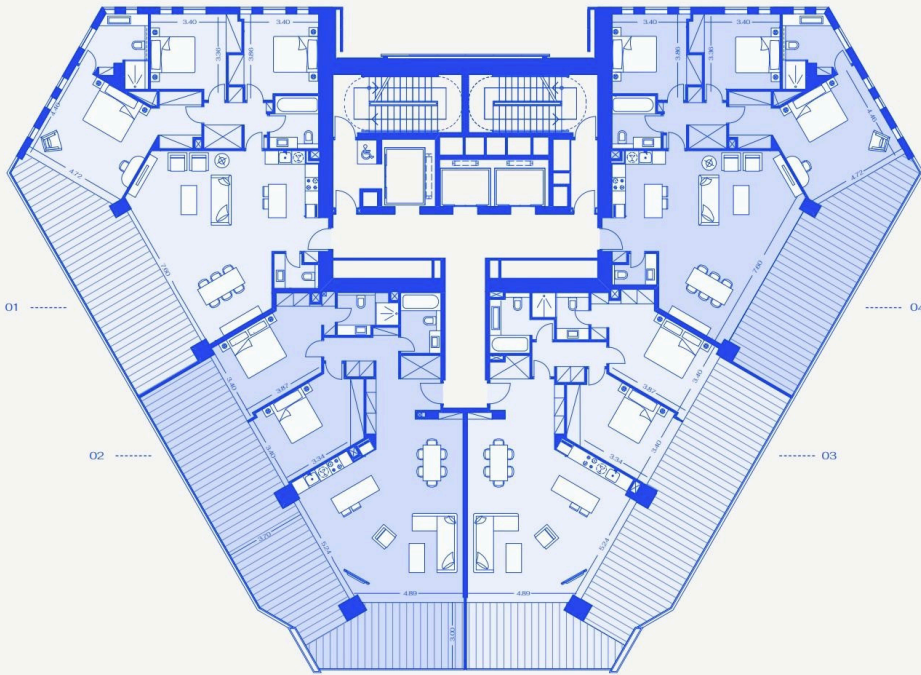
Floorplans and dimensions displayed are indicative and may vary from level to level.





LEVELS 26—28, 30

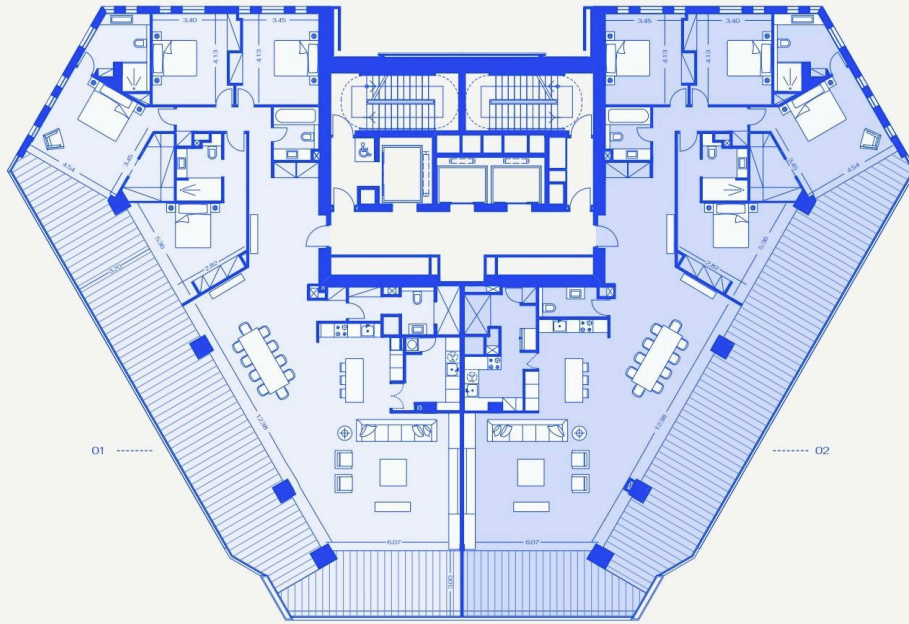
Floorplans and dimensions displayed are indicative and may vary from level to level.



LEVELS 31—32

Floorplans and dimensions displayed are indicative and may vary from level to level.





LEVELS 33—34

Floorplans and dimensions displayed are indicative and may vary from level to level.

