



Reference 5774

## 2 Bed Apartment in Agia Zoni Limassol

**€450,000** +VAT

Agia Zoni, Limassol

2 Bedrooms | 2 Bathrooms | 83 m<sup>2</sup> Covered

### Description

- 2 bedroom
- 2 W/C
- Internal Area 83m<sup>2</sup>
- Covered Verandas 18m<sup>2</sup>
- Covered Parking
- Storage
- A/C
- Underfloor Heating
- Photovoltaics & Net Metering for Each Apartment
- Electric Vehicle Charge Provision for Each Apartment
- Face Recognition Entry Video Phone
- Interior Design Consultation
- Automated Gate for Parking Area
- Wi-Fi Controlled Water Heater

Covered veranda	18 m <sup>2</sup>
Parking spaces	1
Energy efficiency rating	A
Year of construction	2026
Status	Under construction



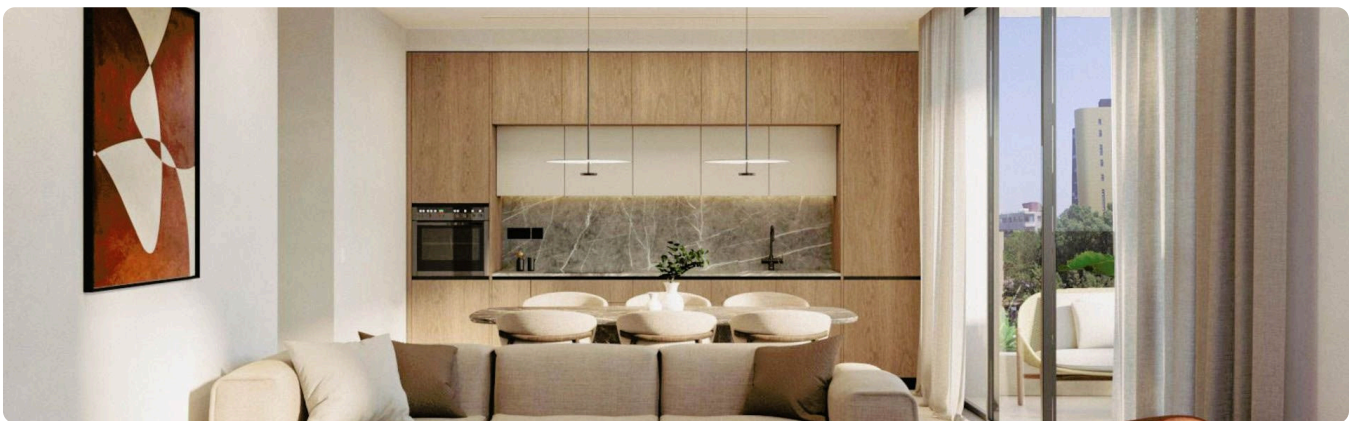
## Facilities

- ✓ Aircondition · Split system
  - ✓ Heating · Underfloor
  - ✓ Elevator
  - ✓ Storage
  - ✓ Solar water heater
  - ✓ Solar photovoltaic panels
- 

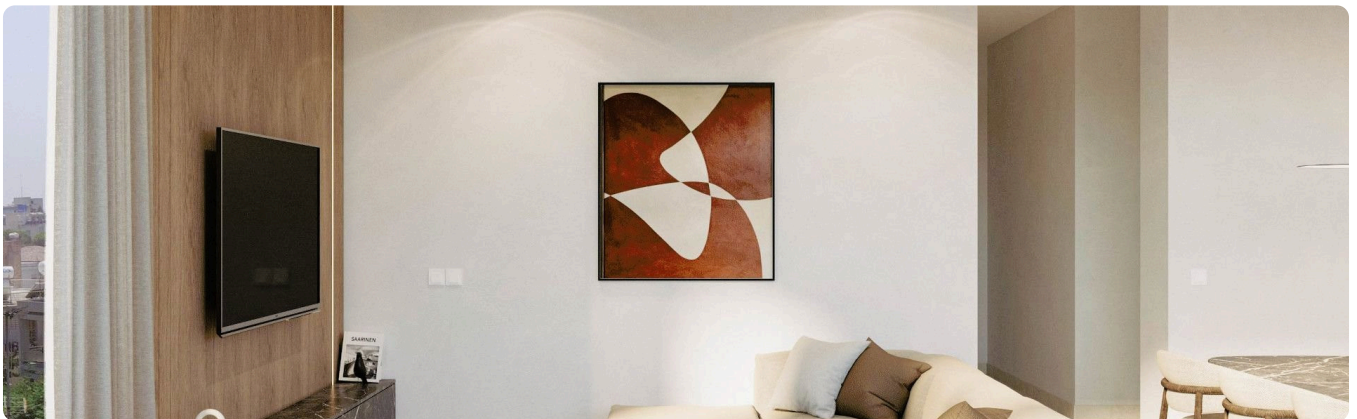
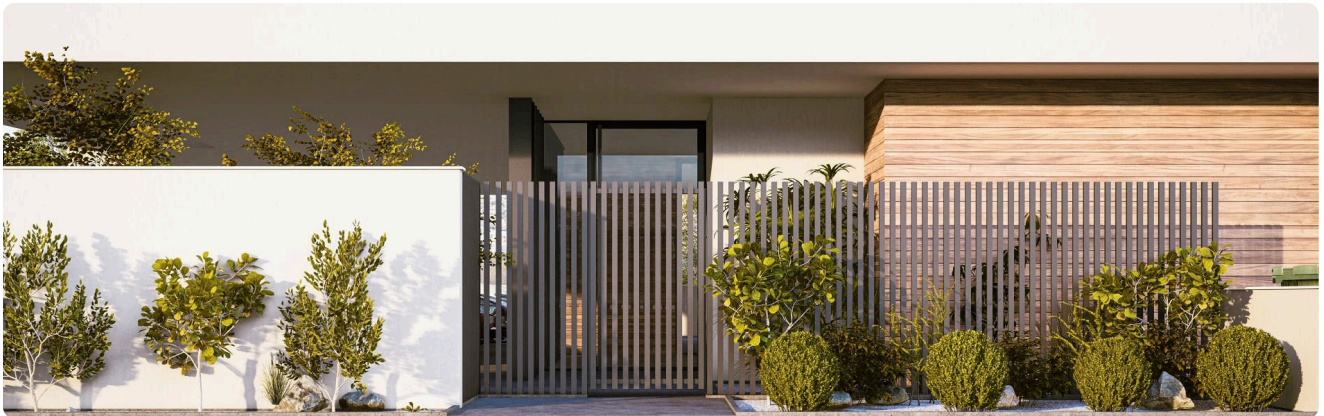
## Features

- ✓ CCTV
  - ✓ Modern design
  - ✓ Near amenities
  - ✓ Pressurized water system
  - ✓ Sound insulation
  - ✓ Thermal insulation
- 

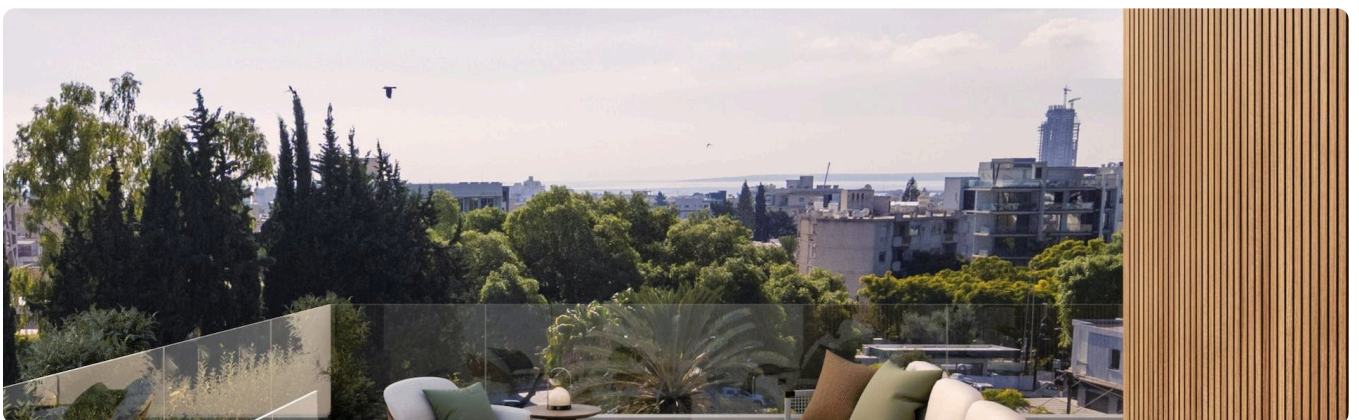
## Gallery



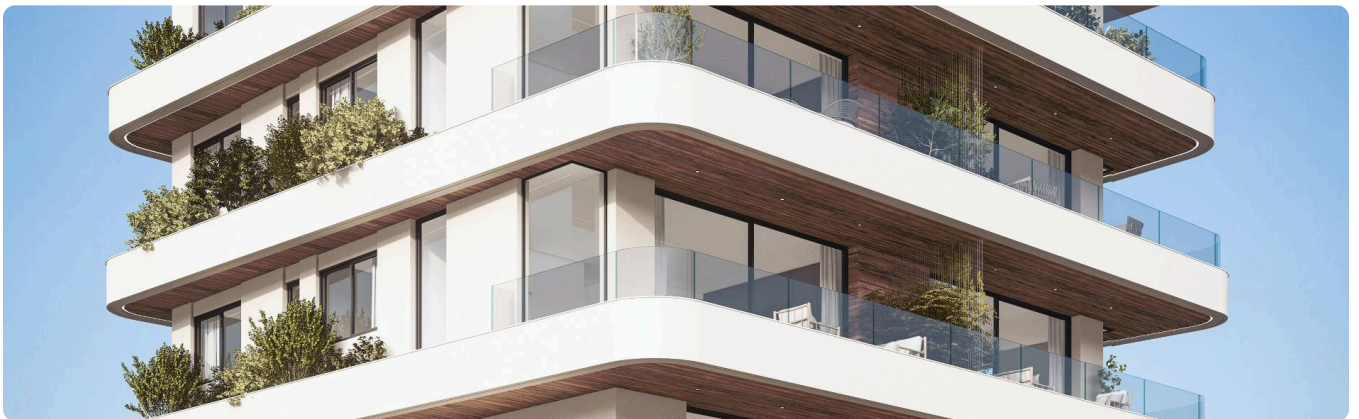


















Floor plans



APT	FLOOR	NO. of BEDROOMS	COVERED AREA	COVERED VER.	ROOF GARDEN	COMMON AR.	TOTAL AREA	COV. PARKINGS
101	1	1	53.5m <sup>2</sup>	17.0m <sup>2</sup>		6.15m <sup>2</sup>	76.65m <sup>2</sup>	1
102	1	2	81.35m <sup>2</sup>	20.4m <sup>2</sup>		9.35m <sup>2</sup>	111.11m <sup>2</sup>	1







APT	FLOOR	NO. of BEDROOMS	COVERED AREA	COVERED VER.	ROOF GARDEN	COMMON AR.	TOTAL AREA	COV. PARKINGS
201	2	2	82.80m <sup>2</sup>	17.9m <sup>2</sup> .		9.52m <sup>2</sup>	110.20m <sup>2</sup>	1
202	2	2	81.35m <sup>2</sup>	17.9m <sup>2</sup> .		9.35m <sup>2</sup>	108.60m <sup>2</sup>	1



APT	FLOOR	NO. of BEDROOMS	COVERED AREA	COVERED VER.	ROOF GARDEN	COMMON AR.	TOTAL AREA	COV. PARKINGS
301	3	2	82.80m <sup>2</sup>	17.7m <sup>2</sup> .		9.52m <sup>2</sup>	110.00m <sup>2</sup>	1
302	3	2	81.35m <sup>2</sup>	20.4m <sup>2</sup> .		9.36m <sup>2</sup>	111.11m <sup>2</sup>	1







APT	FLOOR	NO. of BEDROOMS	COVERED AREA	COVERED VER.	ROOF GARDEN	COMMON AR.	TOTAL AREA	COV. PARKINGS
401	4	3	125.4m <sup>2</sup>	38.5m <sup>2</sup>	91.6m <sup>2</sup>	7.9m <sup>2</sup>	171.8m <sup>2</sup>	2

