



Reference 5218

4 Bedroom Duplex Apartment - Limassol Marina

€5,532,000 +VAT

Limassol Marina, Limassol

4 Bedrooms | 5 Bathrooms | 261 m² Covered

Description

- 4 Bedroom
- 5 W/C
- Internal Covered Area 261m²
- Covered Veranda 54m²
- Uncovered Veranda 173m²
- Covered Parking
- Fantastic View
- Sea View
- Common Pool deck
- Common Swimming pool
- Common Children's pool
- Common Building entrance
- Elevated walkway
- Parking entrance
- Common Tennis court
- Common Playground
- Common BBQ area
- Common Outdoor lounge

Covered veranda	54 m ²
Uncovered veranda	173 m ²
Parking spaces	1
Energy efficiency rating	A
Year of construction	2024
Status	Under construction



•Visitors Parking



Facilities

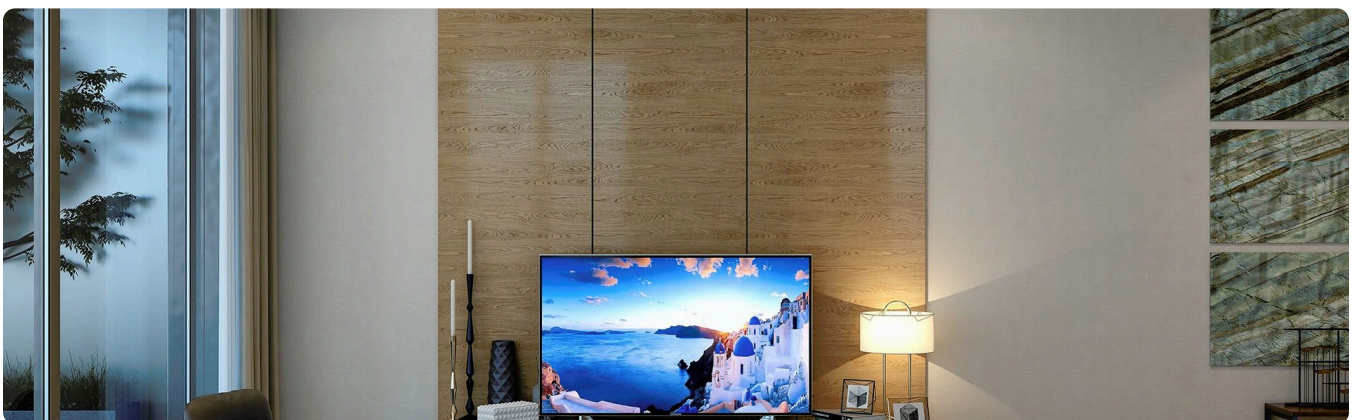
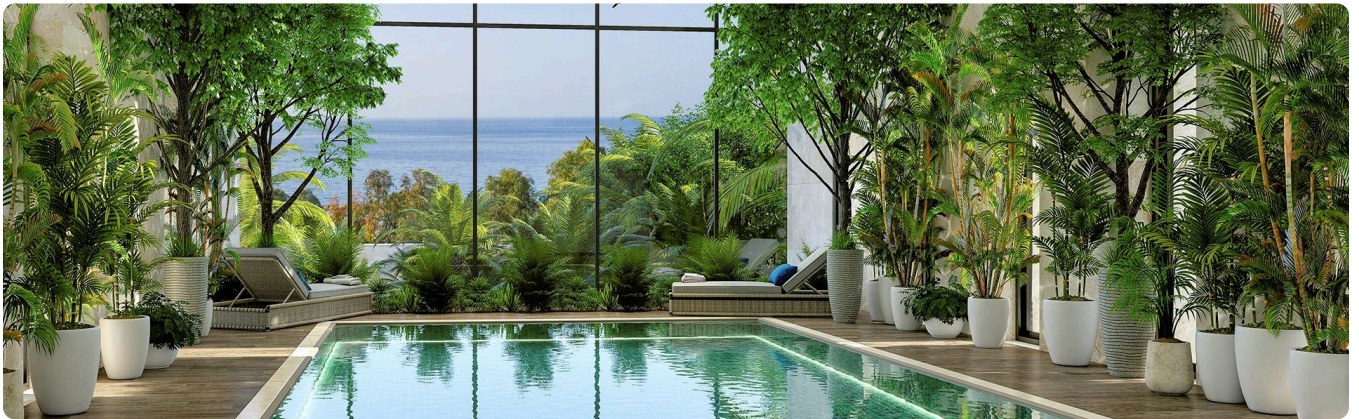
- ✓ Aircondition · Split system
 - ✓ Heating · Underfloor
 - ✓ Parking · Covered
 - ✓ Pool · Communal
 - ✓ Gym
 - ✓ Tennis court
 - ✓ Storage
 - ✓ Solar water heater
-

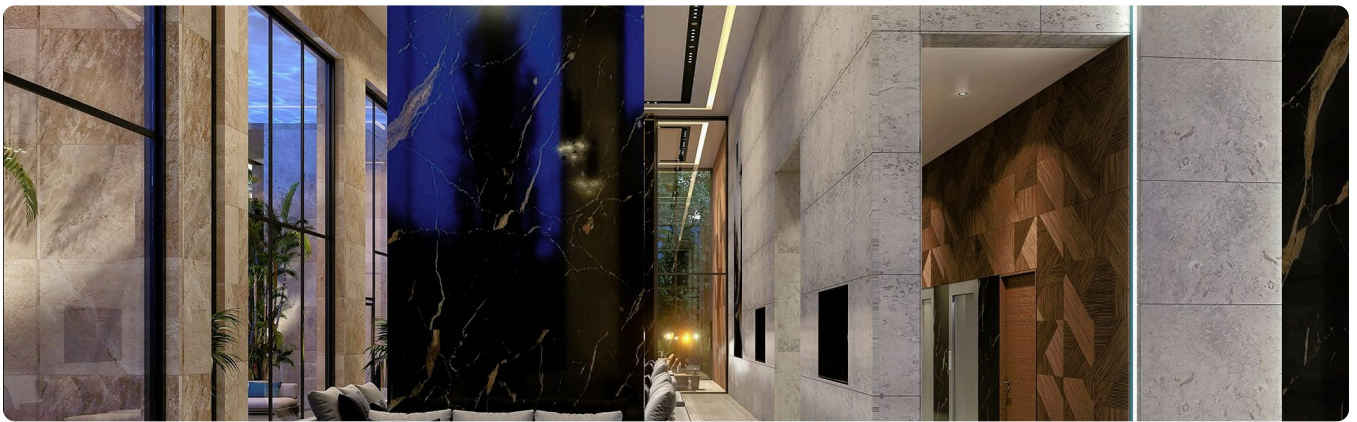
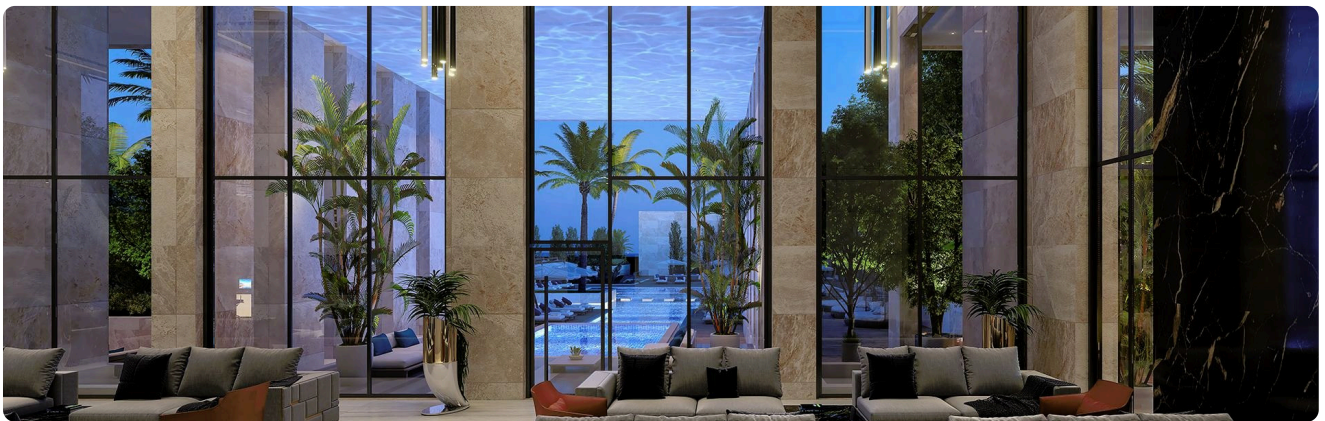
Features

- ✓ Veranda, large
 - ✓ Quiet area
 - ✓ CCTV
 - ✓ Luxury specifications
 - ✓ Modern design
 - ✓ Panoramic view
 - ✓ Sea view
 - ✓ Near amenities
 - ✓ Double glazing
 - ✓ City view
 - ✓ Easy access to main roads
-

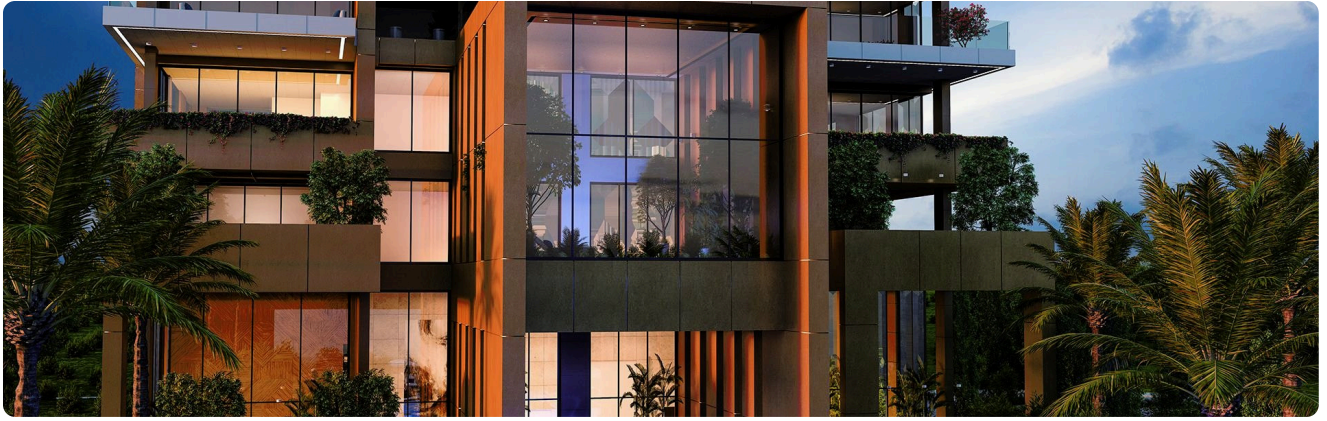
Gallery

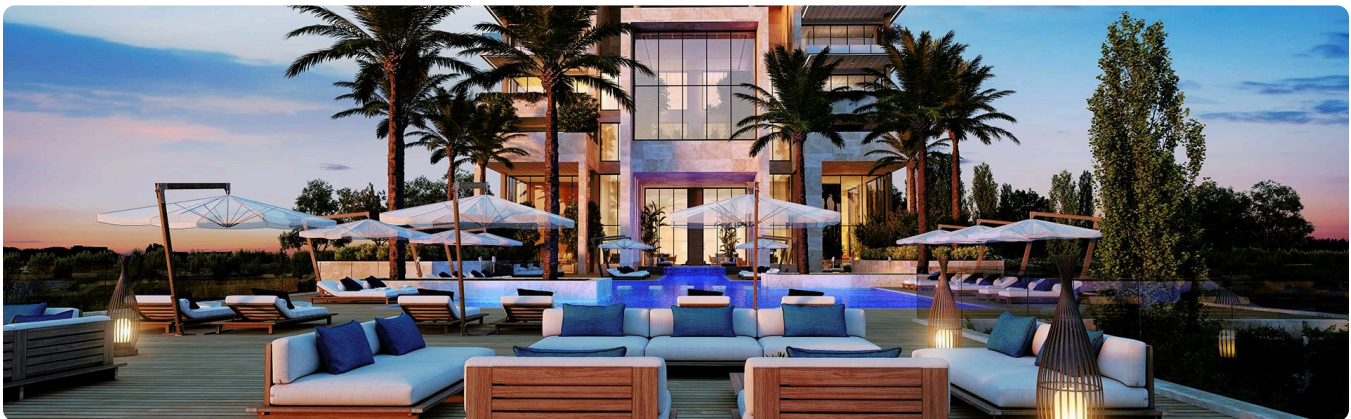
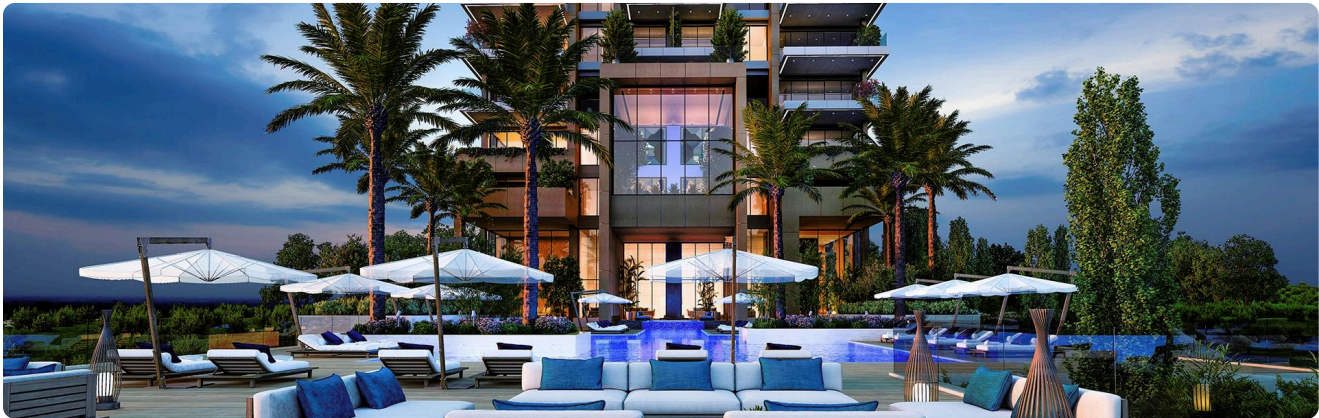


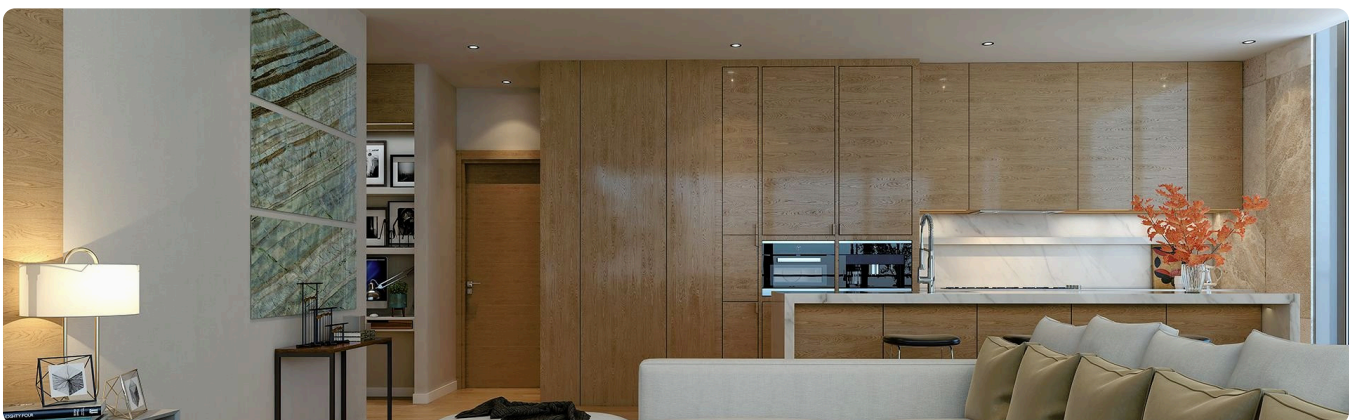
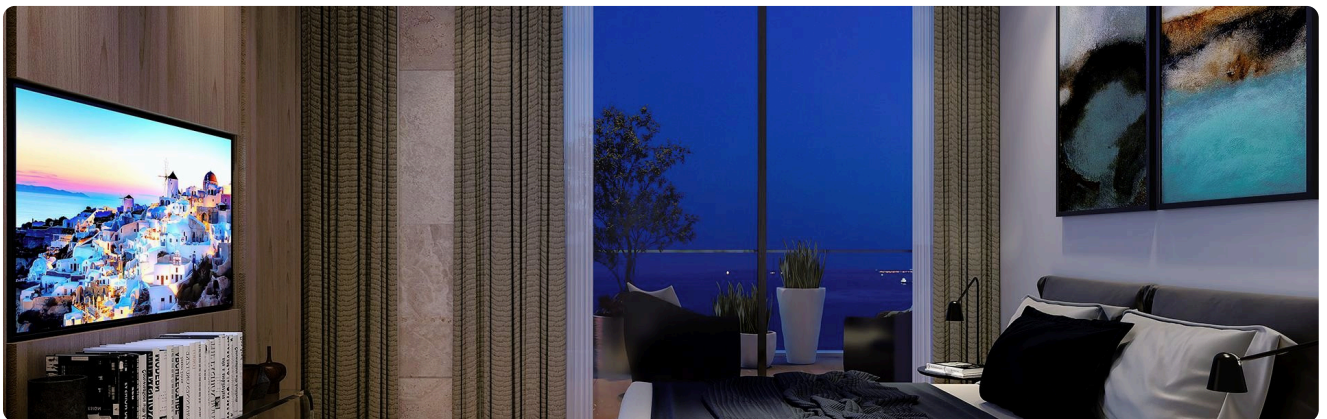
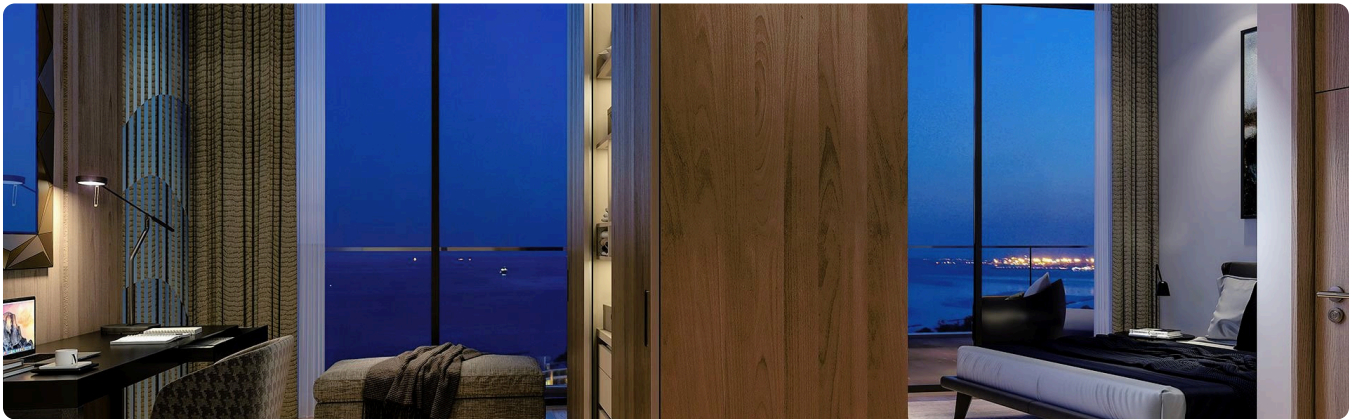
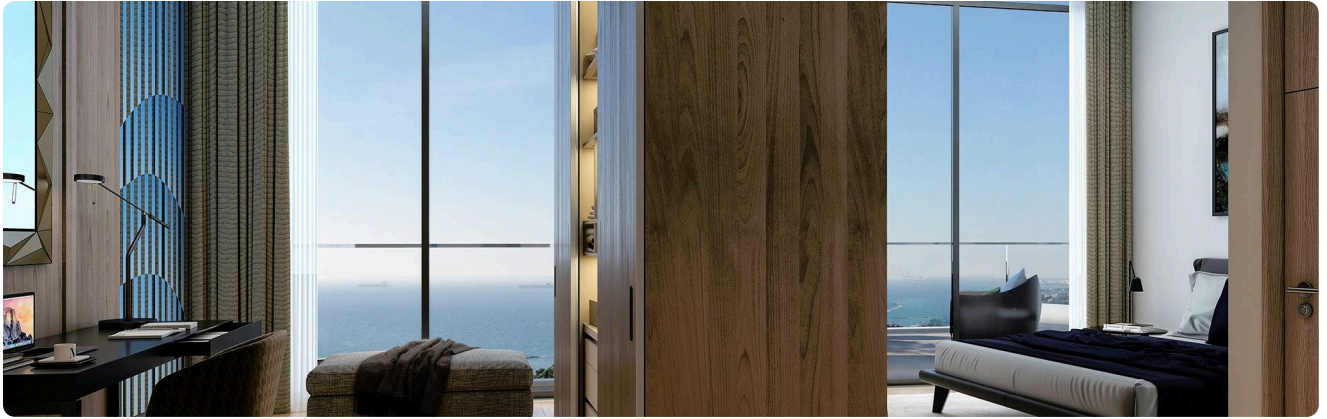


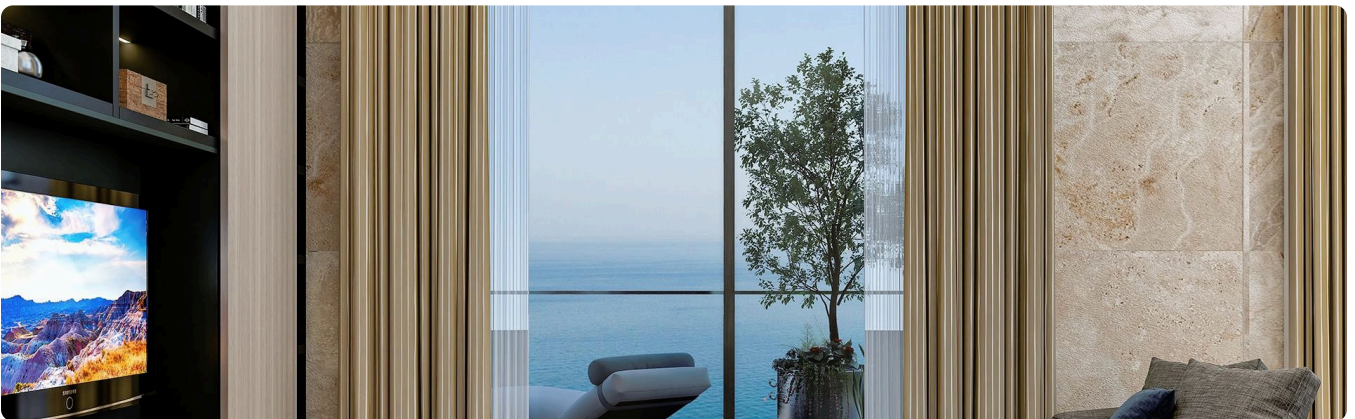
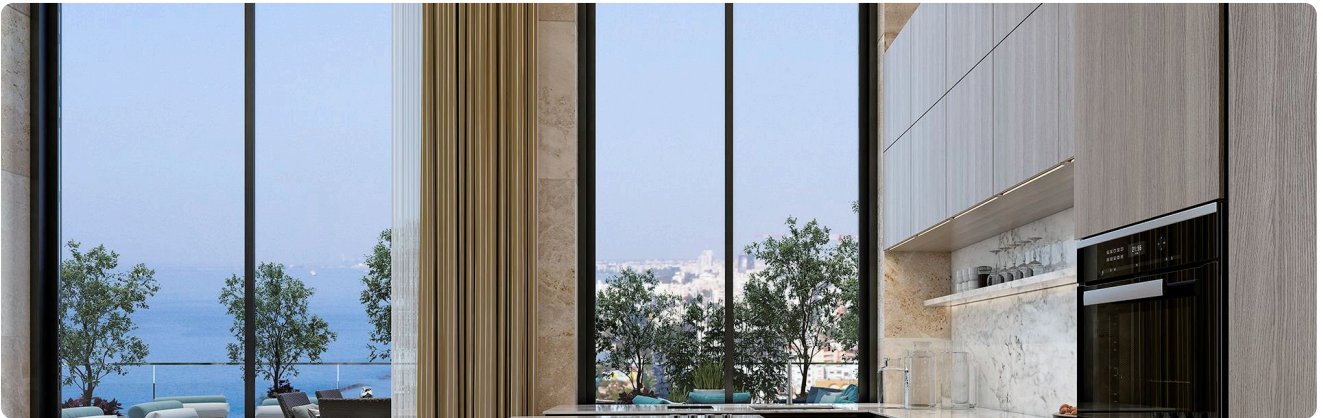




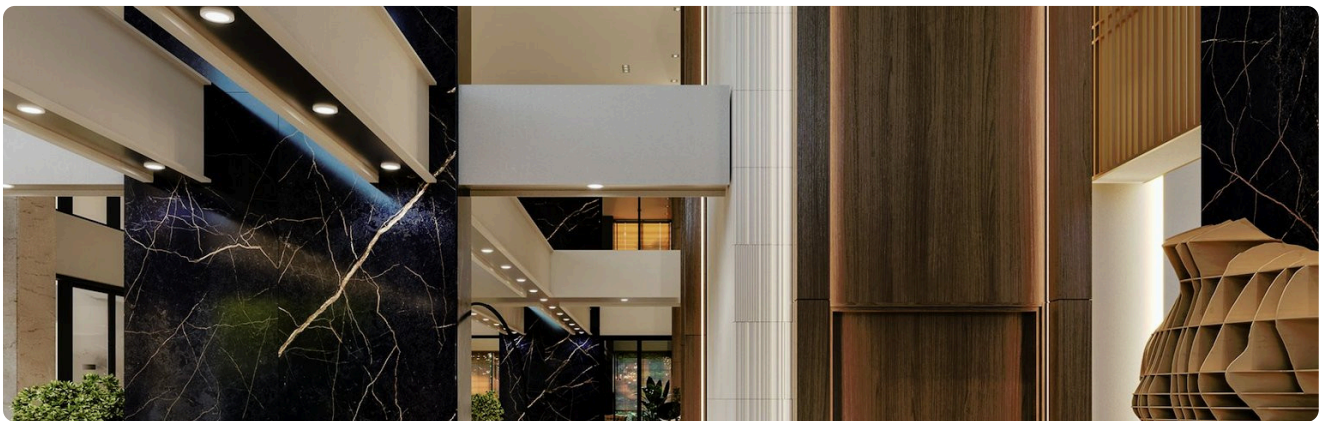
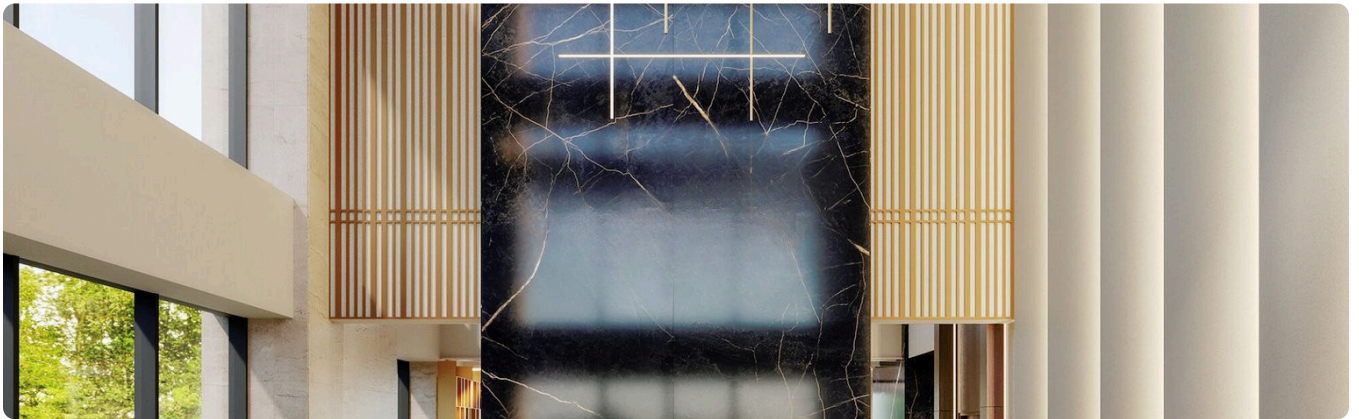












Floor plans



