



Reference 4776

2 Bed Apartment in Ypsonas, Limassol

€240,000 +VAT

Ypsonas, Limassol

2 Bedrooms | 2 Bathrooms | 79.3 m² Covered

Description

- 2 bedrooms
- 2 W/C
- Internal Area 79.3m²
- Covered Veranda 16.9m²
- Covered Parking
- Storage
- Photovoltaic Panels
- Energy Efficiency "A"

Covered veranda **16.9 m²**

Parking spaces **1**

Energy efficiency rating **A**

Status **Under construction**



Facilities

- ✓ Aircondition · Provision
 - ✓ Heating · Provision
 - ✓ Parking · Covered
 - ✓ Storage
 - ✓ Solar water heater
 - ✓ Solar photovoltaic panels
-

Features

- ✓ Guest WC
 - ✓ Veranda
 - ✓ Quiet Area
 - ✓ Ceramic tiles
 - ✓ En suite Bathroom
 - ✓ Modern design
 - ✓ Sea view
 - ✓ Near amenities
 - ✓ Open plan
 - ✓ Pressurized water system
 - ✓ Bright
 - ✓ Entrance gate
 - ✓ Combined kitchen and dining area
 - ✓ Easy access to highway
 - ✓ Thermal insulation
-

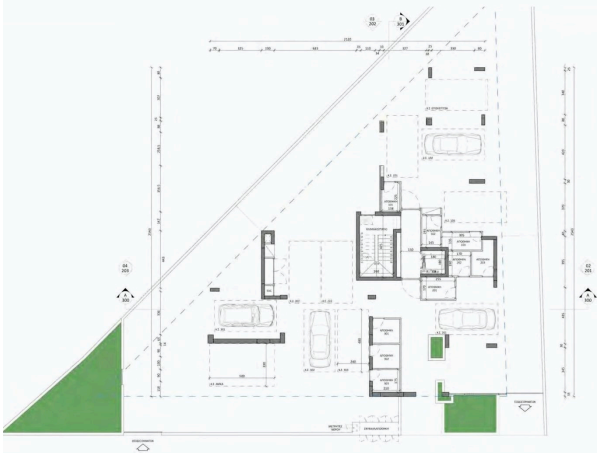
Gallery



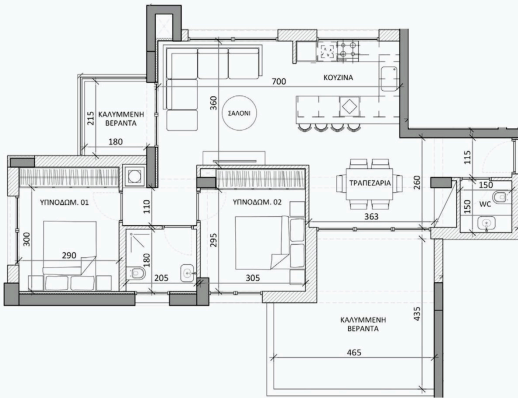
Floor plans

Architectural plans

Ground Floor



Architectural plans



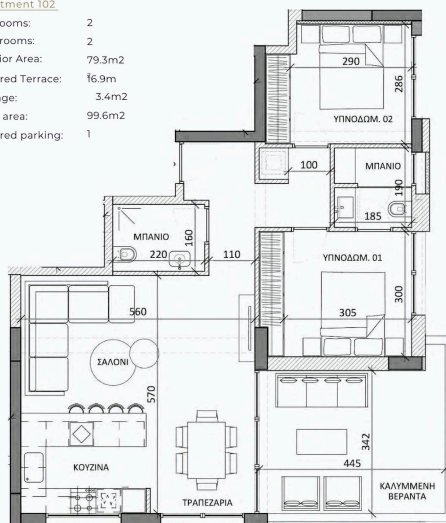
- Apartment 101
- Bedrooms: 2
 - Bathrooms: 2
 - Interior Area: 81.8m²
 - Covered Terrace: 24.1m²
 - Storage: 3.1m²
 - Total area: 108.9m²
 - Covered parking: 1



Architectural plans

Apartment 102

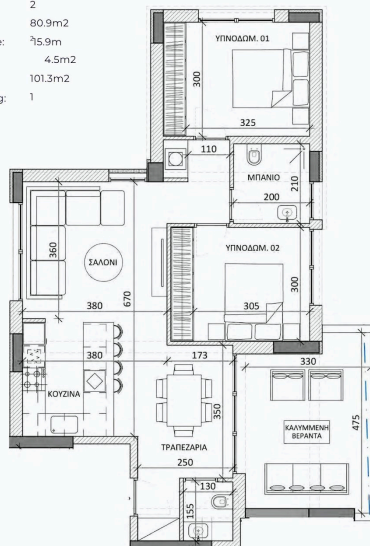
Bedrooms: 2
Bathrooms: 2
Interior Area: 79.3m²
Covered Terrace: 16.9m²
Storage: 3.4m²
Total area: 99.6m²
Covered parking: 1



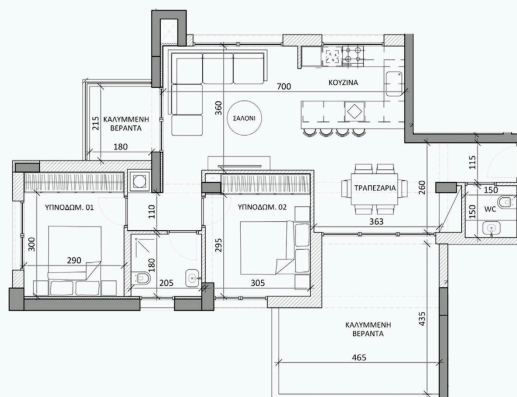
Architectural plans

Apartment 103

Bedrooms: 2
Bathrooms: 2
Interior Area: 80.9m²
Covered Terrace: 15.9m²
Storage: 4.5m²
Total area: 101.3m²
Covered parking: 1



Architectural plans



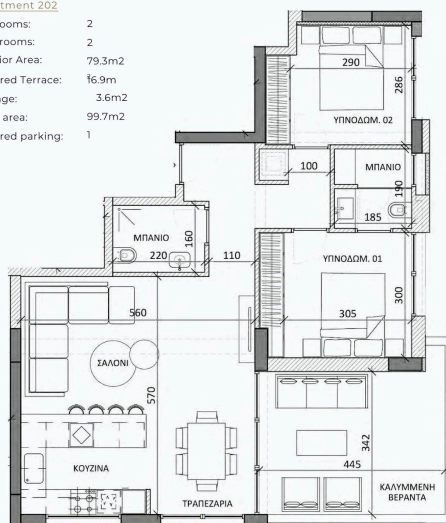
Apartment 201.

Bedrooms:	2
Bathrooms:	2
Interior Area:	81.8m ²
Covered Terrace:	24.1m ²
Storage:	4.3m ²
Total area:	110.1m ²
Covered parking:	1

Architectural plans

Apartment 202

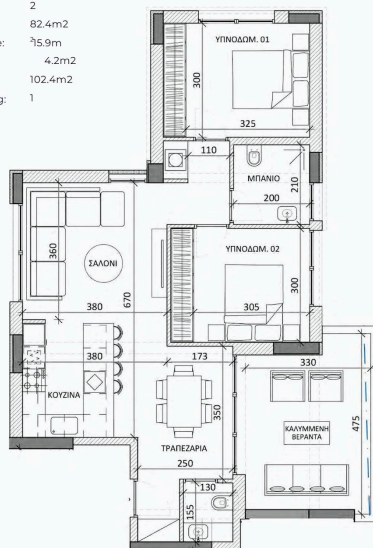
Bedrooms:	2
Bathrooms:	2
Interior Area:	79.3m ²
Covered Terrace:	16.9m
Storage:	3.6m ²
Total area:	99.7m ²
Covered parking:	1



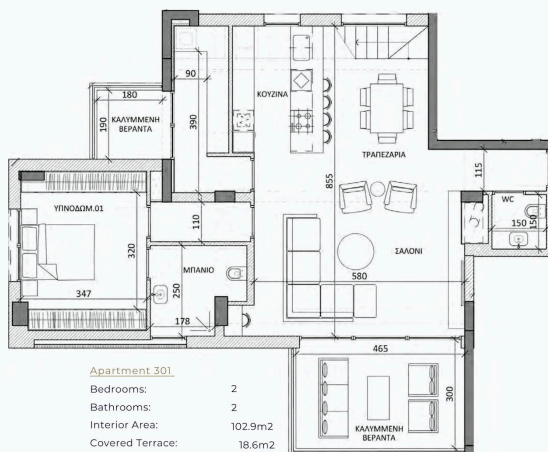
Architectural plans

Apartment 203

Bedrooms: 2
Bathrooms: 2
Interior Area: 82.4m²
Covered Terrace: 75.9m²
Storage: 4.2m²
Total area: 102.4m²
Covered parking: 1



Architectural plans



Apartment 301

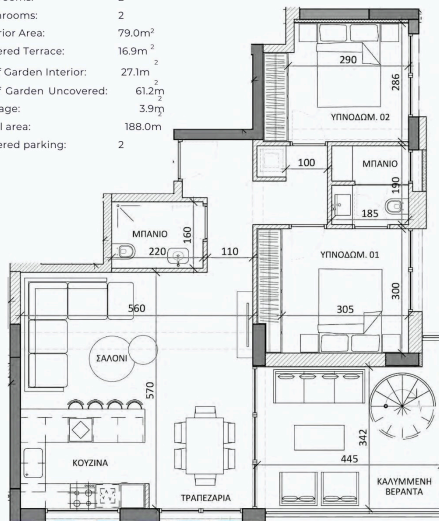
Bedrooms: 2
Bathrooms: 2
Interior Area: 102.9m²
Covered Terrace: 18.6m²
Roof Garden Interior: 38.2m²
Roof Garden Uncovered: 71.1m²
Storage: 3.9m²
Total area: 234.7m²
Covered parking: 2



Architectural floor plan of the first floor of a house. The plan shows a large living area on the left with a sofa and coffee table, a dining area with a table and chairs, and a kitchen area with a sink and stove. A staircase is located in the upper right corner. Dimensions are provided for various sections: 455, 751, 110, 130, 185, 360, 333, 542, 418, and 465.

Bedrooms:	2
Bathrooms:	2
Interior Area:	102.9m ²
Covered Terrace:	18.6m ²
Roof Garden Interior:	38.2m ²
Roof Garden Uncovered:	71.1m ²
Storage:	3.9m ²
Total area:	234.7m ²
Covered parking:	2

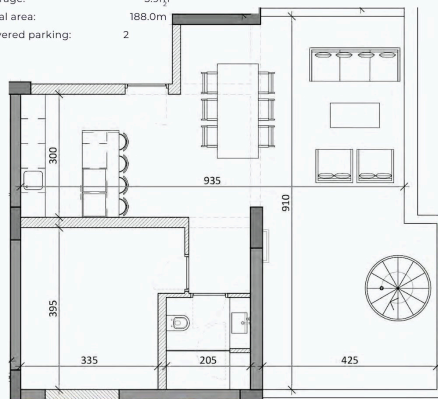
Bedrooms:	2
Bathrooms:	2
Interior Area:	79.0m ²
Covered Terrace:	16.9m ²
Roof Garden Interior:	27.1m ²
Roof Garden Uncovered:	61.2m ²
Storage:	3.9m ²
Total area:	188.0m ²
Covered parking:	2



Architectural plans

Apartment 302

Bedrooms:	2
Bathrooms:	2
Interior Area:	79.0m ²
Covered Terrace:	16.9m ²
Roof Garden Interior:	27.1m ²
Roof Garden Uncovered:	61.2m ²
Storage:	3.9m ²
Total area:	188.0m ²
Covered parking:	2



Architectural plans

Apartment 303

Bedrooms:	2
Bathrooms:	2
Interior Area:	82.4m ²
Covered Terrace:	15.9m ²
Storage:	3.7m ²
Total area:	101.9m ²
Covered parking:	1

