



Reference 2245

3 Bedroom Maisonette Flat In Carlsberg/Latsia Area with Garden **€198,000 +VAT**

Kalithea / Carlsberg, Nicosia

3 Bedrooms | 2 Bathrooms | 105 m² Covered

Description

- ◆ 3 Bedrooms
- ◆ 2 W/C
- ◆ Internal Area 105m²
- ◆ Garden 30sqm
- ◆ Covered Verandas 26m²
- ◆ Photovoltaic Panels Provisions
- ◆ Energy Efficiency A

This project is composed by 6 apartments of 2 and 3 bedrooms. It is located in one of the most well-known areas in the borders of Kallithea and Latsia in Carlsberg Area.

The building has 2 floors. On the ground floor it has the yard of the 1st floor apartments, parking places and storage area.

Big corridors which lead to the elevator and the stairway.

Covered veranda	26 m ²
Garden	30 m ²
Parking spaces	1
Energy efficiency rating	A
Status	Under construction



Spacious areas in all apartments.



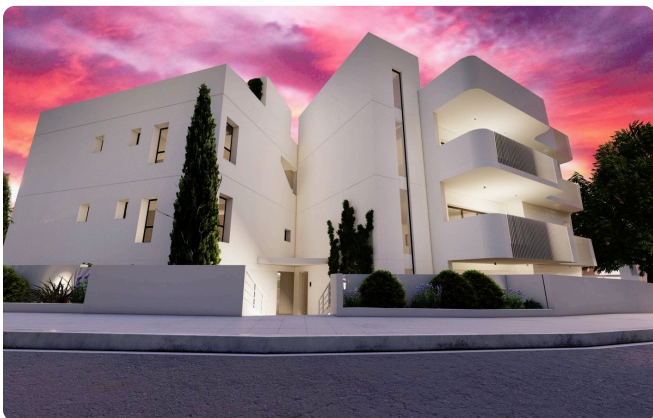
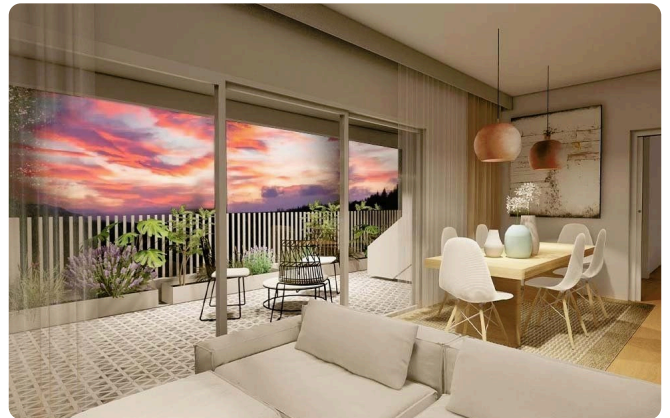
Facilities

- ✓ Aircondition · Split system
 - ✓ Solar water heater
 - ✓ Solar photovoltaic panels, Provision
-

Features

- ✓ Laundry room
 - ✓ Alarm system
 - ✓ Pressurized water system
 - ✓ Connected to electric mains
 - ✓ Municipal water/sewage
 - ✓ Sound insulation
 - ✓ Thermal insulation
-

Gallery





Floor plans

