



Reference 20012

1+1 Bed Apartment in Apostolou Petrou & Pavlou, Limassol **€329,000 +VAT**

Apostolou Petrou & Pavlou, Limassol

2 Bedrooms | 1 Bathroom | 60 m² Covered

Description

- 1+1 bedrooms
- 1 W/C
- Internal Area 60m²
- Covered verandas 12.5m²
- Covered Parking
- Storage
- Energy Efficiency "A"

Covered veranda	12.5 m ²
Parking spaces	1
Energy efficiency rating	A
Year of construction	2028
Status	Off plan



Facilities

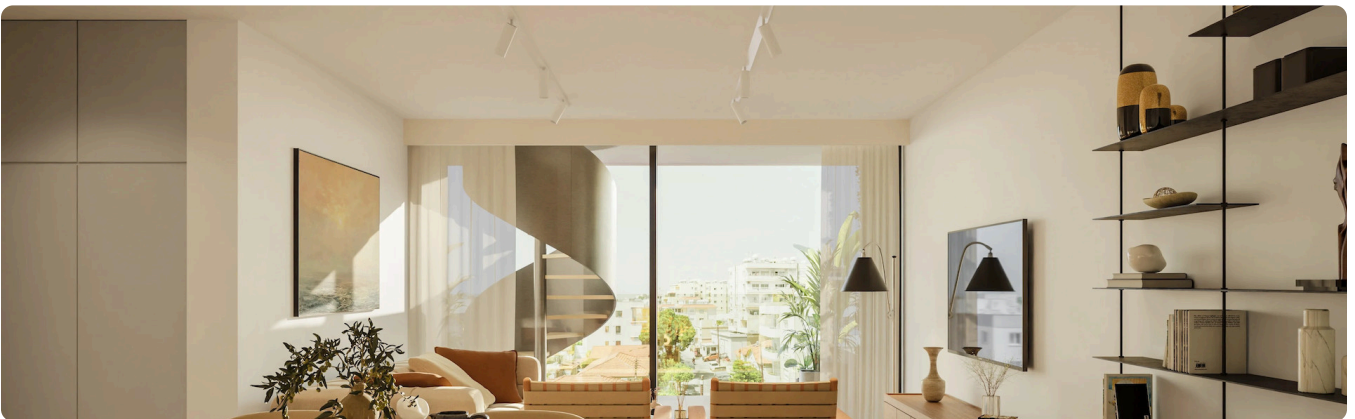
✓ Parking · Covered ✓ Elevator ✓ Storage

Features

✓ Veranda ✓ Ceramic tiles ✓ Modern design ✓ Near amenities ✓ Open plan
✓ High ceilings ✓ Easy access to main roads ✓ Thermal insulation

Gallery



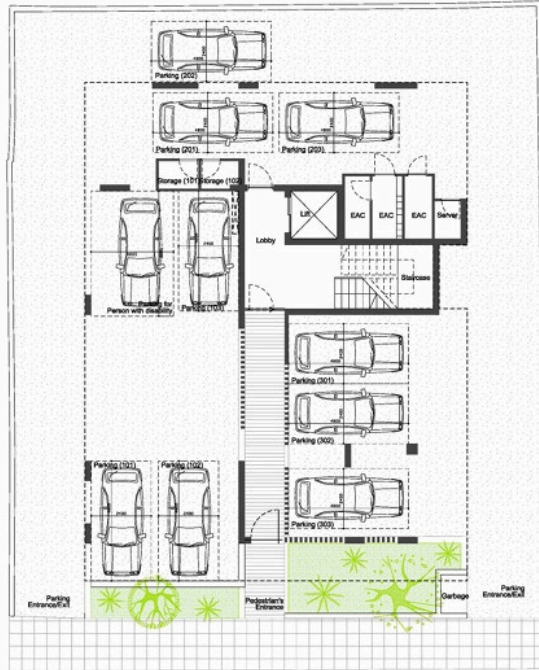






Floor plans

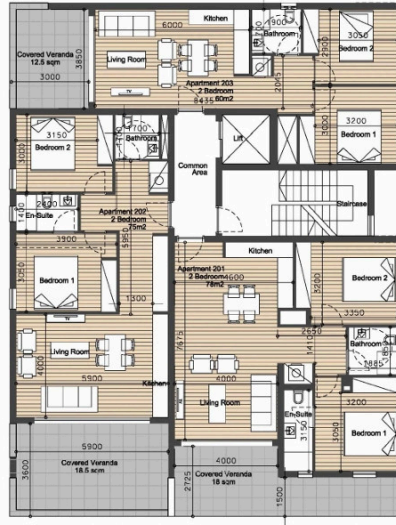
Ground Floor



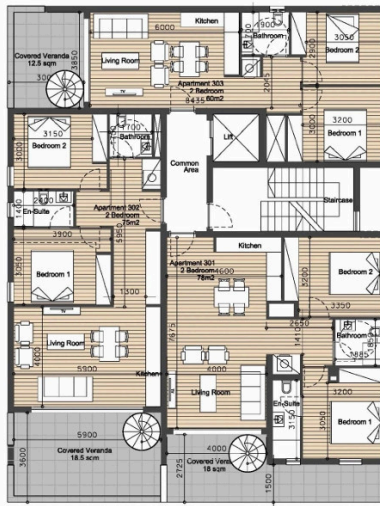
First Floor



Second Floor



Third Floor



Roof Garden

