



Reference 19893

Beachfront 2 Bed Apartment in Livadia, Larnaca

€1,310,000 +VAT

Livadia, Larnaca

2 Bedrooms | 2 Bathrooms | 90.3 m² Covered

Description

- 2 bedrooms
- 2 W/C
- Internal Area 90.3m²
- Covered Verandas 24.3m²
- Uncovered Verandas 3.8m²
- Underground Parking
- Communal Swimming Pool
- Gym & Sauna
- Bar & Restaurant
- Walking distance from the beach

Covered veranda	24.3 m ²
Uncovered veranda	3.8 m ²
Parking spaces	1
Energy efficiency rating	A
Status	Off plan



Facilities

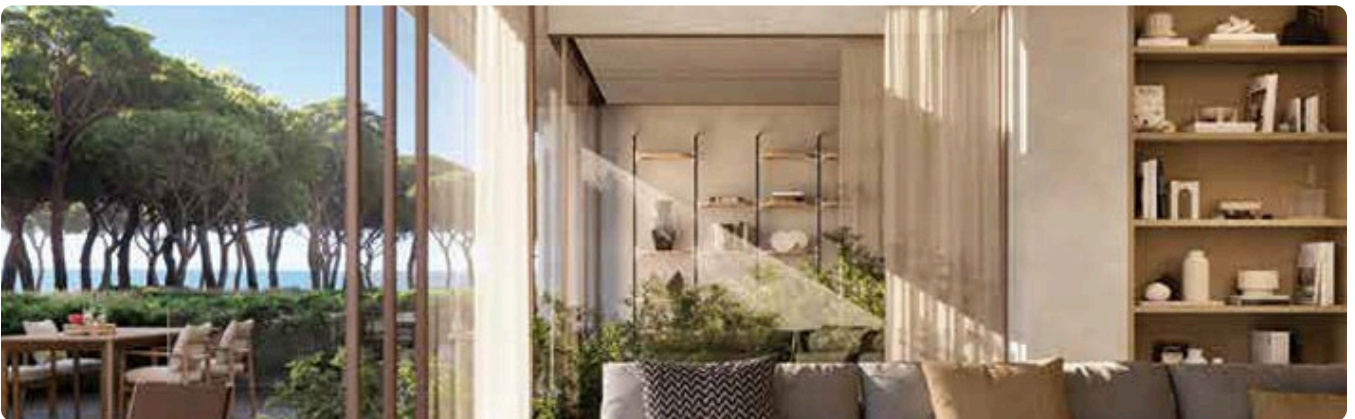
✓ Parking · Underground ✓ Pool · Communal ✓ Gym ✓ Sauna

Features

✓ Veranda ✓ Luxury specifications ✓ Modern design ✓ Panoramic view ✓ Sea view
✓ Sea front ✓ Walking distance to beach ✓ Near amenities ✓ Bright ✓ Spacious rooms

Gallery



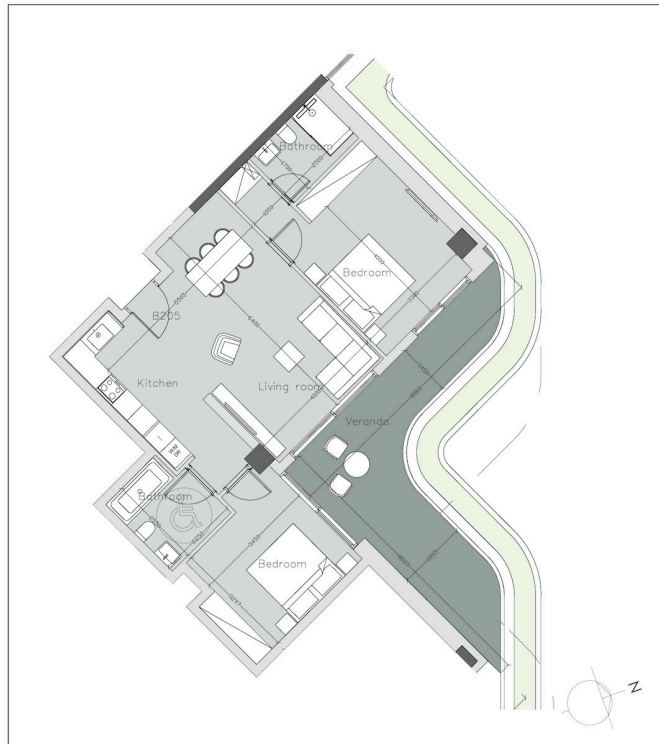






Floor plans

building B
apartment B205



building B
apartment B205

