



Reference 19868

3 Bed Apartment in Agios Nikolaos, Limassol

€930,000 +VAT

Agios Nikolaos, Limassol

3 Bedrooms | 3 Bathrooms | 120.1 m² Covered

Description

- 3 bedrooms
- 3 W/C
- Internal Area 120.1m²
- Covered Verandas 36.3m²
- Covered Parking
- Underfloor Heating
- Gym & Spa
- Communal Swimming Pool
- Energy Efficiency 'A'
- Distance to sea: 600 m

Covered veranda	36.3 m ²
Parking spaces	1
Energy efficiency rating	A
Year of construction	2028
Status	Under construction



Facilities

- ✓ Aircondition · Split system
 - ✓ Heating · Underfloor
 - ✓ Parking · Covered
 - ✓ Pool · Communal
 - ✓ Childrens playground
 - ✓ Gym
 - ✓ Spa
-

Features

- ✓ Guest WC
 - ✓ Veranda
 - ✓ Marble flooring
 - ✓ Parquet flooring
 - ✓ En suite bathroom
 - ✓ Luxury specifications
 - ✓ Modern design
 - ✓ Walking distance to beach
 - ✓ Near amenities
 - ✓ Double glazing
 - ✓ Open plan
 - ✓ Investment opportunity
 - ✓ High ceilings
 - ✓ Thermal insulation
-

Gallery

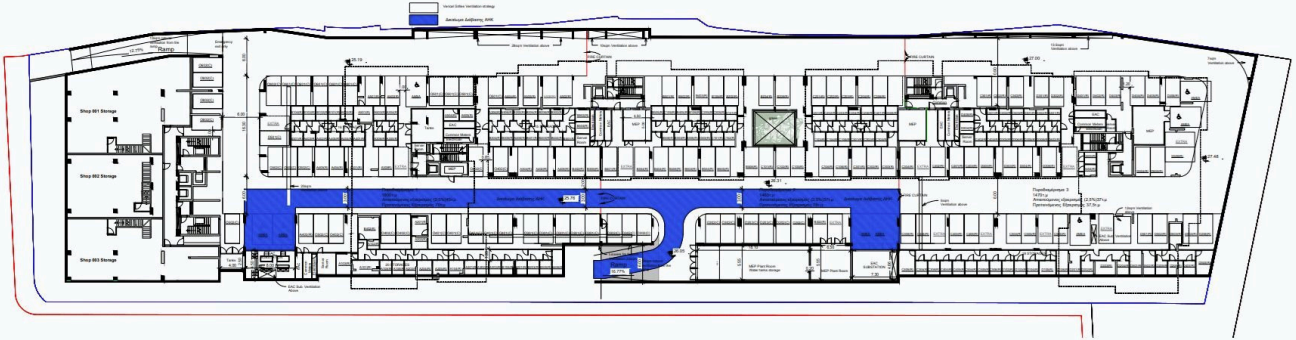




Floor plans

floor plans

basement parking



floor plans

ground floor



floor plans blocks c&d



1st floor



block c

UNIT N°	TOTAL AREA M ²
C101	83.65
C102	173.07
C103	89.84
C104	57.32
C105	131.82
C106	155.00

block d

UNIT N°	TOTAL AREA M ²
D101	118.96
D102	85.44
D103	85.37
D104	123.52
D105	128.00
D106	84.71

floor plans blocks c&d



2nd floor



block c

UNIT N°	TOTAL AREA M ²
C201	82.78
C202	161.38
C203	80.89
C204	57.32
C205	122.99
C206	155.00

block d

UNIT N°	TOTAL AREA M ²
D201	122.86
D202	79.74
D203	83.77
D204	123.82
D205	125.85
D206	82.81



floor plans blocks c&d



3rd floor



block c

UNIT N°	TOTAL AREA M ²
C301	82.88
C302	161.38
C303	80.99
C304	57.72
C305	122.99
C306	155.40

block d

UNIT N°	TOTAL AREA M ²
D301	118.26
D302	78.24
D303	78.97
D304	123.12
D305	125.45
D306	80.91

floor plans blocks c&d



4th floor



block c

UNIT N°	TOTAL AREA M ²
C401	83.79
C402	161.48
C403	80.89
C404	57.72
C405	123.39
C406	162.96

block d

UNIT N°	TOTAL AREA M ²
D401	118.36
D402	79.14
D403	79.37
D404	122.32
D405	124.65
D406	81.41



floor plans blocks c&d



5th floor



block c

UNIT N°	TOTAL AREA M ²
C501	82.18
C502	160.58
C503	80.09
C504	57.72
C505	122.96
C506	155.40

block d

UNIT N°	TOTAL AREA M ²
D501	123.16
D502	83.44
D503	83.27
D504	123.12
D505	131.55
D506	81.01

