



Reference 19867

1 Bed Apartment in Agios Nikolaos, Limassol

**€430,000** +VAT

Agios Nikolaos, Limassol

1 Bedroom

1 Bathroom

57.6 m<sup>2</sup> Covered

## Description

- 1 bedroom
- 1 W/C
- Internal Area 57.6m<sup>2</sup>
- Covered Verandas 18.4m<sup>2</sup>
- Covered Parking
- Underfloor Heating
- Gym & Spa
- Communal Swimming Pool
- Energy Efficiency 'A'
- Distance to sea: 600 m

Covered veranda	18.4 m <sup>2</sup>
Parking spaces	1
Energy efficiency rating	A
Year of construction	2028
Status	Under construction



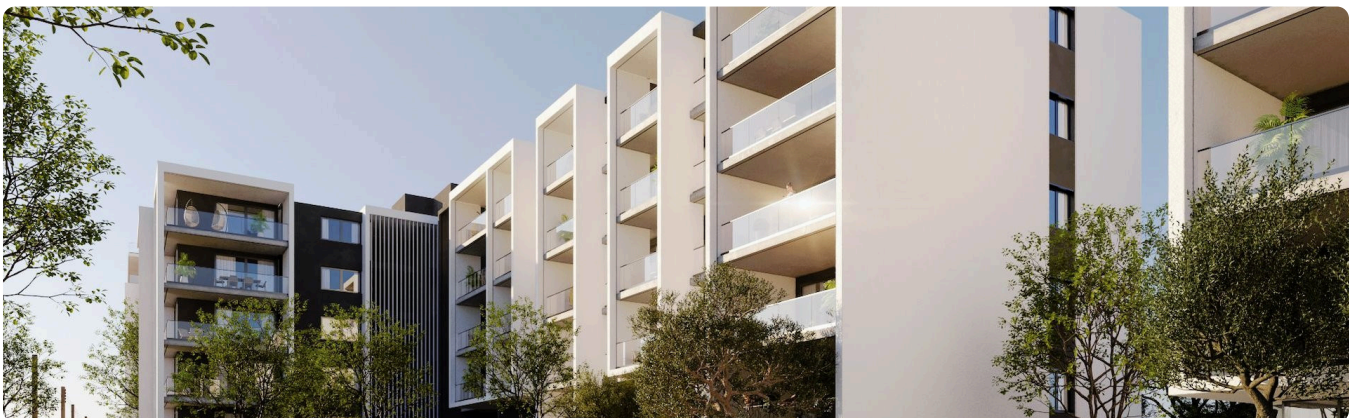
## Facilities

- ✓ Aircondition · Split system
  - ✓ Heating · Underfloor
  - ✓ Parking · Covered
  - ✓ Pool · Communal
  - ✓ Childrens playground
  - ✓ Gym
  - ✓ Spa
- 

## Features

- ✓ Veranda
  - ✓ Marble flooring
  - ✓ Parquet flooring
  - ✓ Luxury specifications
  - ✓ Modern design
  - ✓ Walking distance to beach
  - ✓ Near amenities
  - ✓ Double glazing
  - ✓ Open plan
  - ✓ Investment opportunity
  - ✓ High ceilings
  - ✓ Thermal insulation
- 

## Gallery

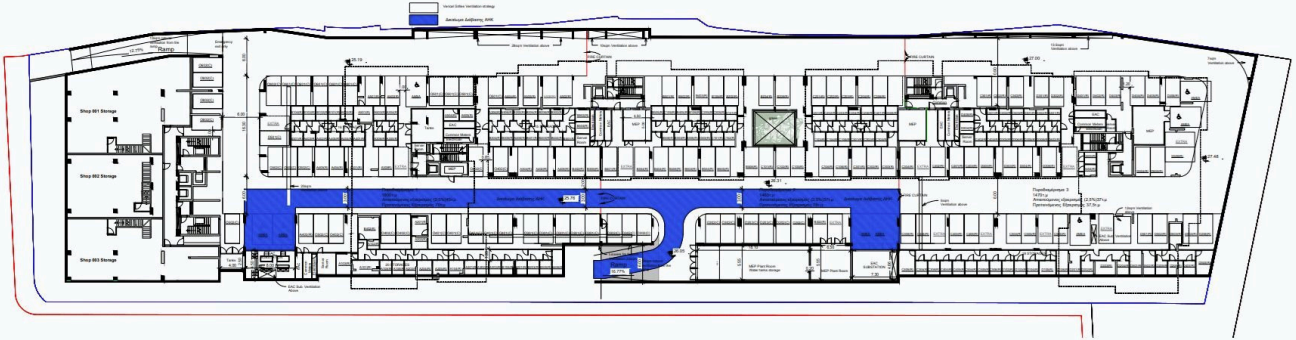




# Floor plans

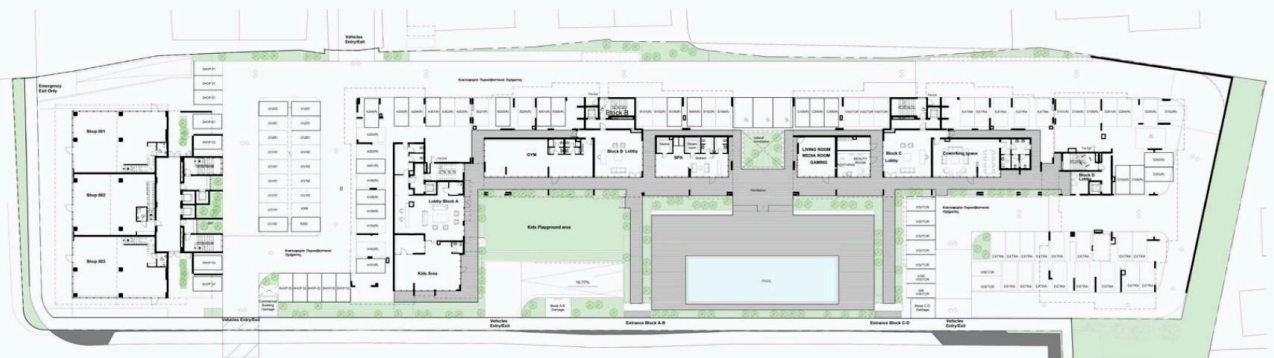
## floor plans

basement parking



## floor plans

ground floor



# floor plans blocks c&d



## 1st floor



### block c

UNIT N°	TOTAL AREA M <sup>2</sup>
C101	83.65
C102	173.07
C103	89.84
C104	57.32
C105	131.82
C106	155.00

### block d

UNIT N°	TOTAL AREA M <sup>2</sup>
D101	118.96
D102	85.44
D103	85.37
D104	123.52
D105	128.00
D106	84.71

# floor plans blocks c&d



## 2nd floor



### block c

UNIT N°	TOTAL AREA M <sup>2</sup>
C201	82.78
C202	161.38
C203	80.89
C204	57.32
C205	122.99
C206	155.00

### block d

UNIT N°	TOTAL AREA M <sup>2</sup>
D201	122.86
D202	79.74
D203	83.77
D204	123.82
D205	125.85
D206	82.81



# floor plans blocks c&d



## 3rd floor



### block c

UNIT N°	TOTAL AREA M <sup>2</sup>
C301	82.88
C302	161.38
C303	80.99
C304	57.72
C305	122.99
C306	155.40

### block d

UNIT N°	TOTAL AREA M <sup>2</sup>
D301	118.26
D302	78.24
D303	78.97
D304	123.12
D305	125.45
D306	80.91

# floor plans blocks c&d



## 4th floor



### block c

UNIT N°	TOTAL AREA M <sup>2</sup>
C401	83.79
C402	161.48
C403	80.89
C404	57.72
C405	123.39
C406	162.96

### block d

UNIT N°	TOTAL AREA M <sup>2</sup>
D401	118.36
D402	79.14
D403	79.37
D404	122.32
D405	124.65
D406	81.41



# floor plans blocks c&d



## 5th floor



### block c

UNIT N°	TOTAL AREA M²
C501	82.18
C502	160.58
C503	80.09
C504	57.72
C505	122.96
C506	155.40

### block d

UNIT N°	TOTAL AREA M²
D501	123.16
D502	83.44
D503	83.27
D504	123.12
D505	131.55
D506	81.01

