



Reference 19861

Big 2 Bed Apartment in Pareklissia, Limassol

€310,000 +VAT

Pareklissia, Limassol

2 Bedrooms

2 Bathrooms

88 m² Covered

Description

- 2 bedrooms
- 2 W/C
- Internal Area 88m²
- Covered Veranda 13m²
- Covered Parking
- Storage
- Energy Efficiency "A"

Covered veranda 13 m²

Parking spaces 1

Energy efficiency rating A

Year of construction 2028

Status Under construction



Facilities

✓ Aircondition · Split system ✓ Parking · Covered ✓ Elevator ✓ Storage ✓ Solar water heater

Features

✓ Guest WC ✓ Veranda ✓ Laminate flooring ✓ Parquet flooring ✓ Ceramic tiles
✓ En suite bathroom ✓ Modern design ✓ Near amenities ✓ Double glazing ✓ Open plan
✓ Thermal insulation

Gallery





Floor plans

1ST FLOOR

104 ▶
 1 Bedroom
 1 Bathroom
 55 SQM Internal Area
 19 SQM Covered Veranda

101 ▶
 2 Bedrooms
 2 Bathrooms
 78.5 SQM Internal Area
 20 SQM Covered Veranda



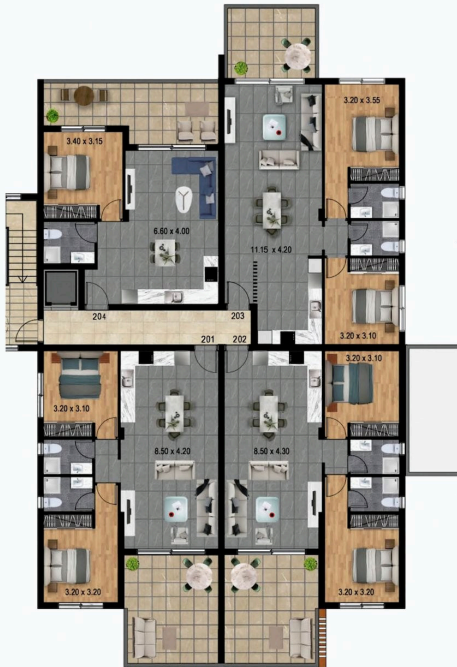
◀ **103**
 2 Bedrooms
 2 Bathrooms
 88 SQM Internal Area
 13 SQM Covered Veranda

◀ **102**
 2 Bedrooms
 2 Bathrooms
 78.5 SQM Internal Area
 20 SQM Covered Veranda

2ND FLOOR

204 ▶
 1 Bedroom
 1 Bathroom
 55 SQM Internal Area
 19 SQM Covered Veranda

201 ▶
 2 Bedrooms
 2 Bathrooms
 78.5 SQM Internal Area
 20 SQM Covered Veranda



◀ **203**
 2 Bedrooms
 2 Bathrooms
 88 SQM Internal Area
 13 SQM Covered Veranda

◀ **202**
 2 Bedrooms
 2 Bathrooms
 78.5 SQM Internal Area
 20 SQM Covered Veranda



ROOF FLOOR

