



Reference 19844

2 Bed Apartment Penthouse with Roof Garden in Limassol Center **€410,000 +VAT**

Limassol Center, Limassol

2 Bedrooms | 3 Bathrooms | 80 m² Covered

Description

- 2 Bedrooms
- 3 W/C
- Internal Area 80m²
- Covered Veranda 19m²
- Roof Garden 33.2m²
- Covered Parking
- Storage
- Energy Efficiency "A"

Covered veranda	19 m ²
Roof garden	33.2 m ²
Parking spaces	1
Energy efficiency rating	A
Year of construction	2028
Status	Under construction



Facilities

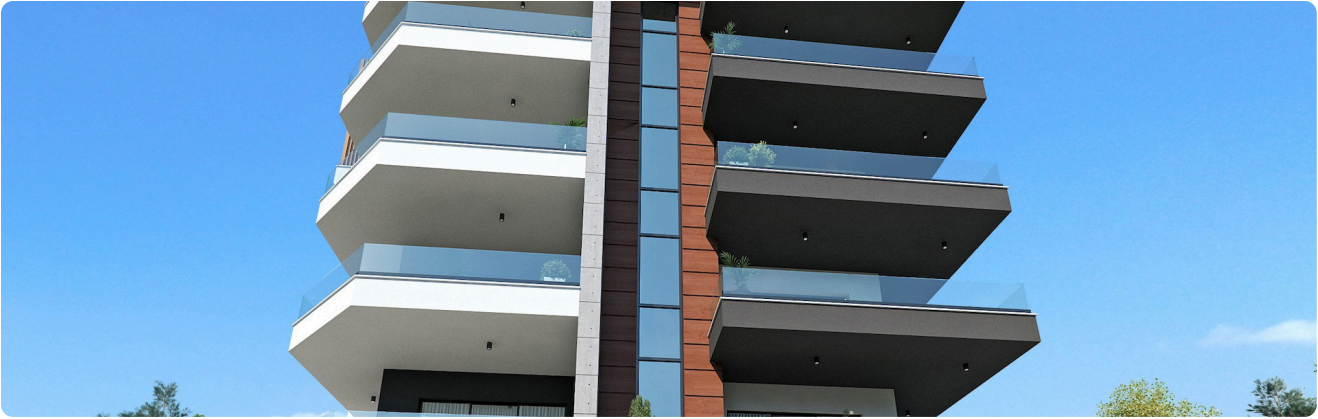
✓ Aircondition · Provision ✓ Parking · Covered ✓ Elevator ✓ Storage ✓ Solar water heater

Features

✓ Ceramic tiles ✓ Modern design ✓ Near amenities ✓ Roof garden
✓ Shutters, electric (provision) ✓ Easy access to main roads ✓ Thermal insulation

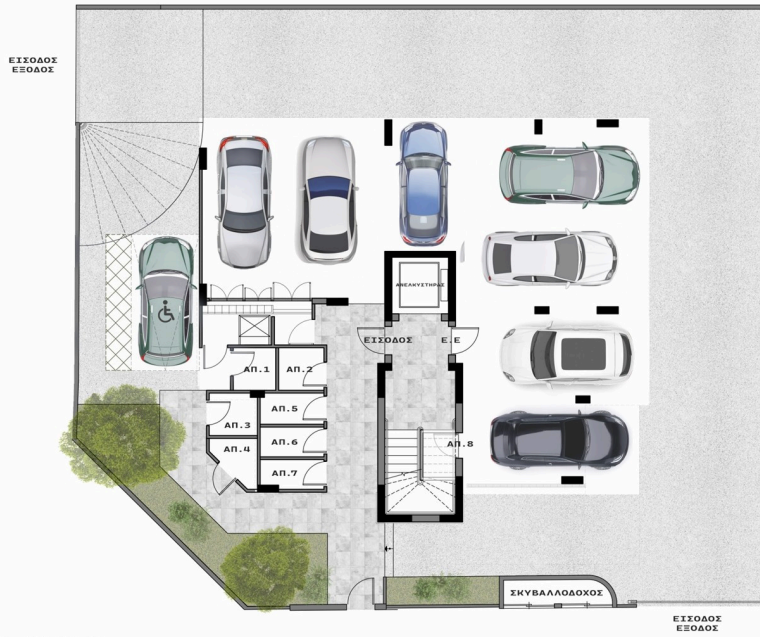
Gallery







Floor plans



GROUND FLOOR



FIRST FLOOR





SECOND FLOOR

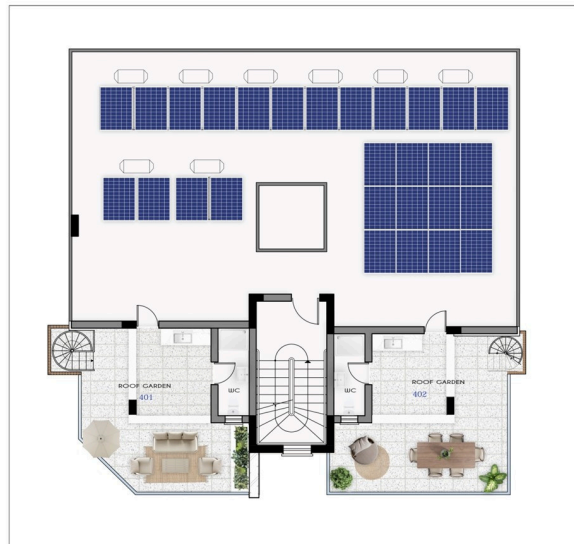


THIRD FLOOR





FOURTH FLOOR



ROOF GARDEN

