



Reference 19739

2 Bed Penthouse with roof garden in Apostolou Petrou & Pavlou, Limassol

€449,000 +VAT

Apostolou Petrou & Pavlou, Limassol

2 Bedrooms | 2 Bathrooms | 75 m² Covered

Description

- 2 bedrooms
- 2 W/C
- Internal Area 75m²
- Covered verandas 22.5m²
- Roof Garden 37m²
- Covered Parking
- Storage
- Energy Efficiency "A"

Covered veranda	22.5 m ²
Roof garden	37 m ²
Parking spaces	1
Energy efficiency rating	A
Year of construction	2028
Status	Off plan



Facilities

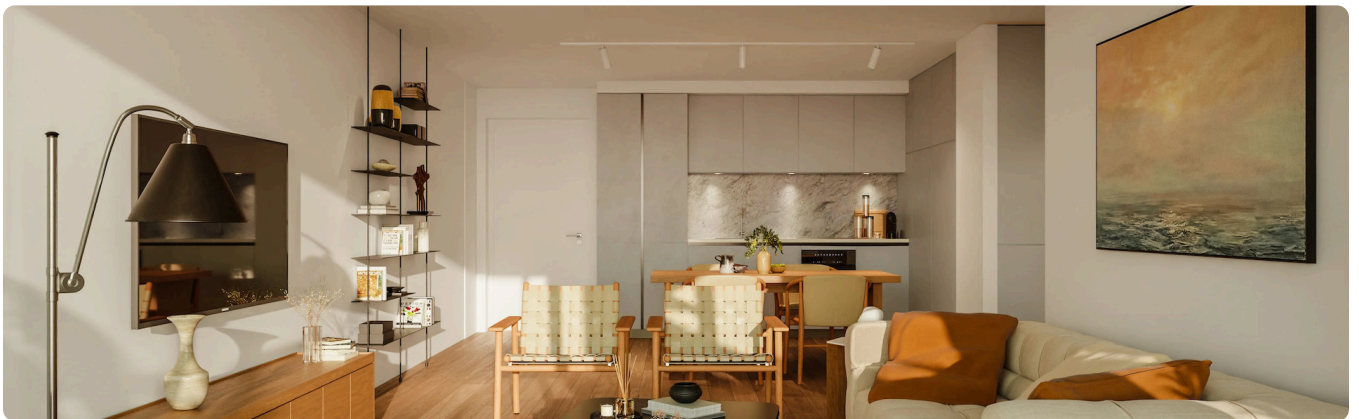
✓ Parking · Covered ✓ Elevator ✓ Storage

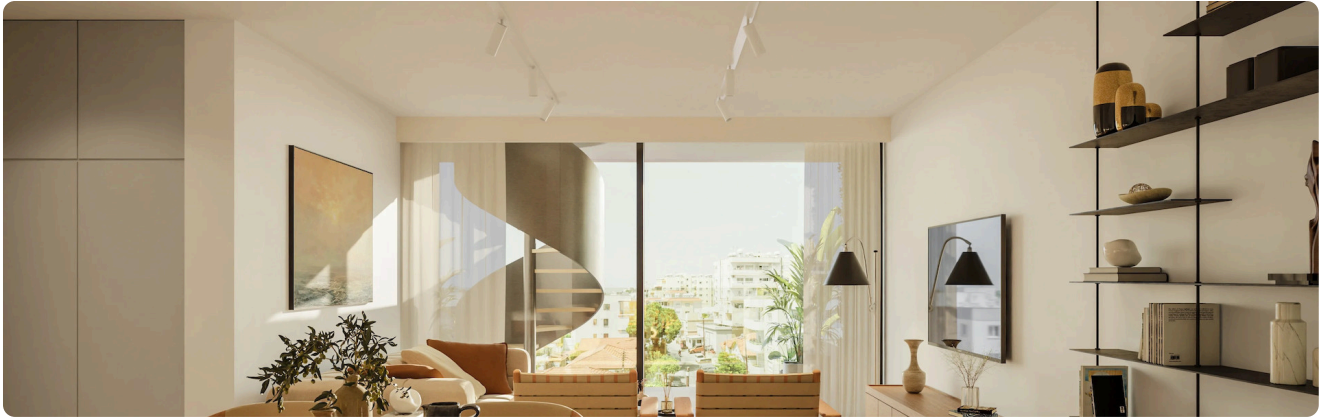
Features

✓ Veranda ✓ Ceramic tiles ✓ Modern design ✓ Near amenities ✓ Roof garden
✓ Open plan ✓ High ceilings ✓ Easy access to main roads ✓ Thermal insulation

Gallery



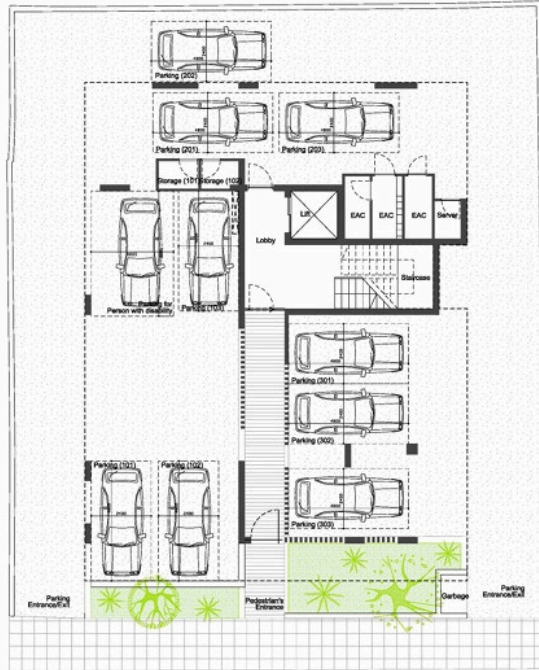






Floor plans

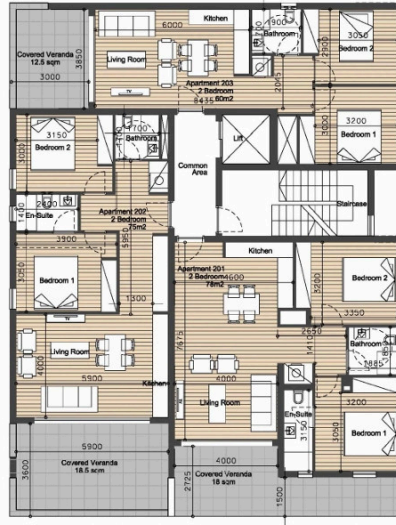
Ground Floor



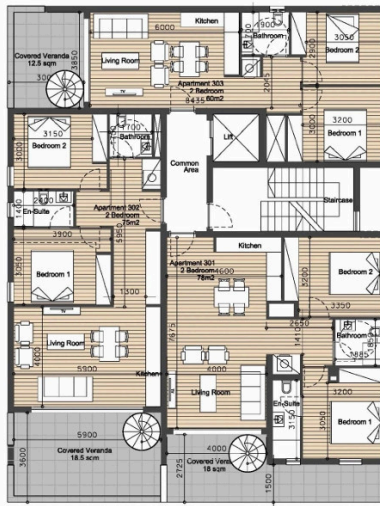
First Floor



Second Floor



Third Floor



Roof Garden

