



Reference 19738

2 Bed Apartment in Apostolou Petrou & Pavlou, Limassol

**€395,000** +VAT

Apostolou Petrou & Pavlou, Limassol

2 Bedrooms

2 Bathrooms

75 m<sup>2</sup> Covered

## Description

- 2 bedrooms
- 2 W/C
- Internal Area 75m<sup>2</sup>
- Covered verandas 22.5m<sup>2</sup>
- Covered Parking
- Storage
- Energy Efficiency "A"

Covered veranda	22.5 m <sup>2</sup>
Parking spaces	1
Energy efficiency rating	A
Year of construction	2028
Status	Off plan



## Facilities

✓ Parking · Covered ✓ Elevator ✓ Storage

---

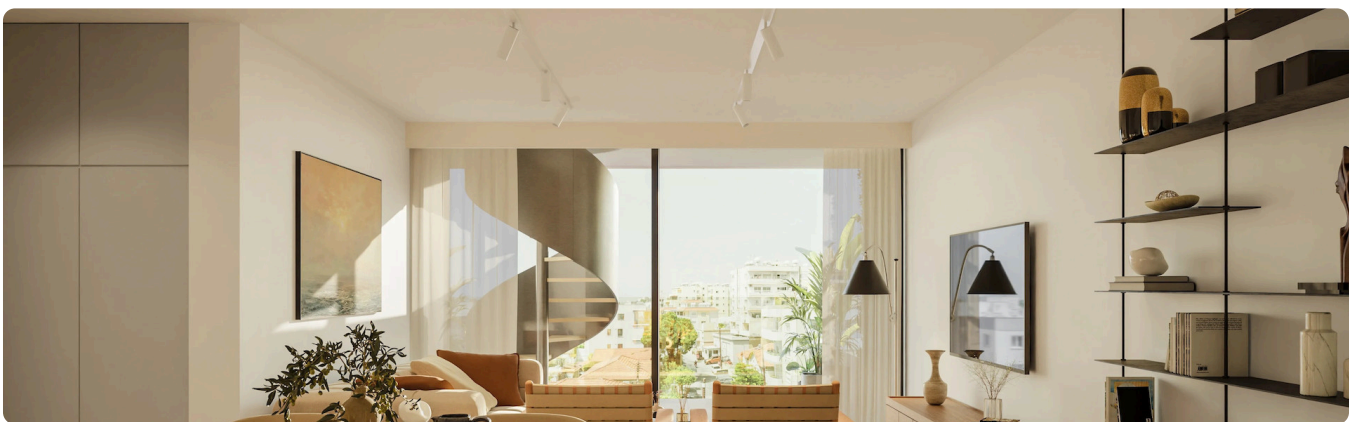
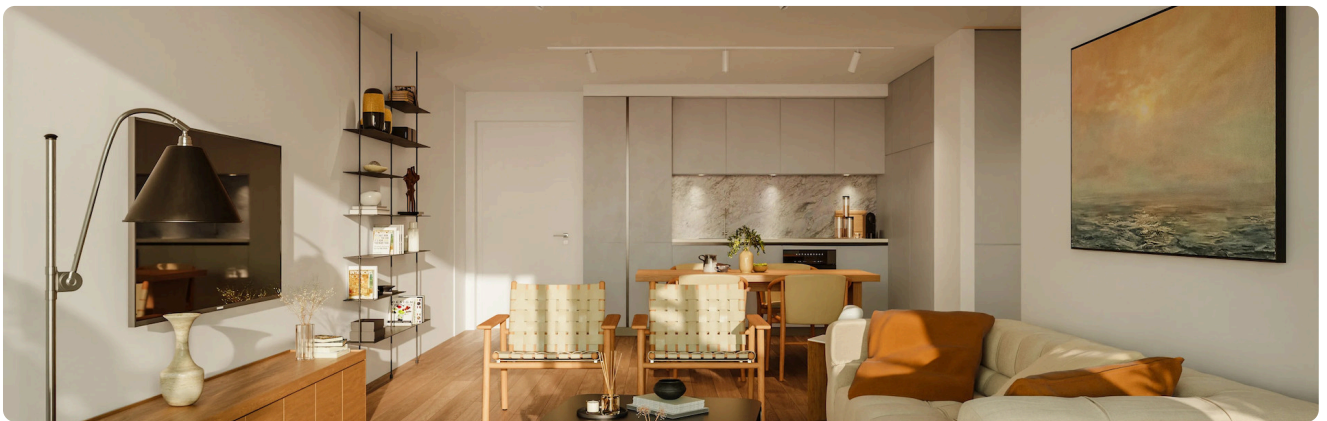
## Features

✓ Veranda ✓ Ceramic tiles ✓ Modern design ✓ Near amenities ✓ Open plan  
✓ High ceilings ✓ Easy access to main roads ✓ Thermal insulation

---

## Gallery



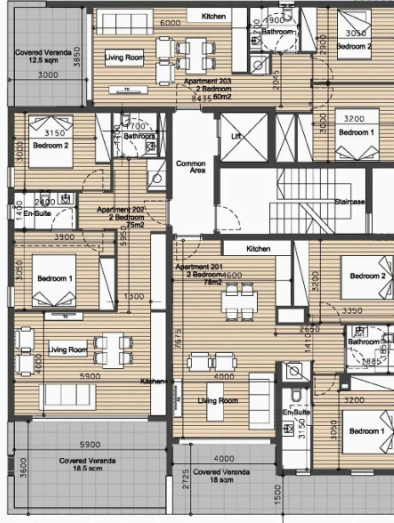




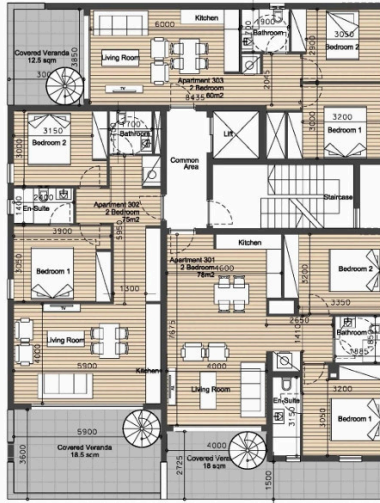




# Second Floor



# Third Floor



# Roof Garden

