



Reference 19736

2 Bed Apartment in Apostolou Petrou & Pavlou, Limassol

€399,000 +VAT

Apostolou Petrou & Pavlou, Limassol

2 Bedrooms

2 Bathrooms

78 m² Covered

Description

- 2 bedrooms
- 2 W/C
- Internal Area 78m²
- Covered verandas 18.5m²
- Covered Parking
- Storage
- Energy Efficiency "A"

Covered veranda	18.5 m ²
Parking spaces	1
Energy efficiency rating	A
Year of construction	2028
Status	Off plan



Facilities

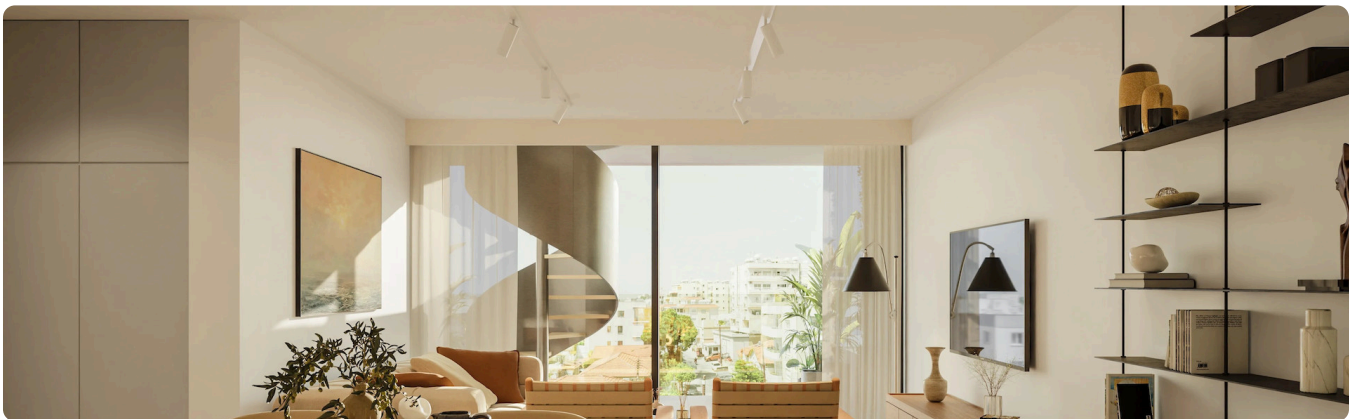
✓ Parking · Covered ✓ Elevator ✓ Storage

Features

✓ Veranda ✓ Ceramic tiles ✓ Modern design ✓ Near amenities ✓ Open plan
✓ High ceilings ✓ Easy access to main roads ✓ Thermal insulation

Gallery



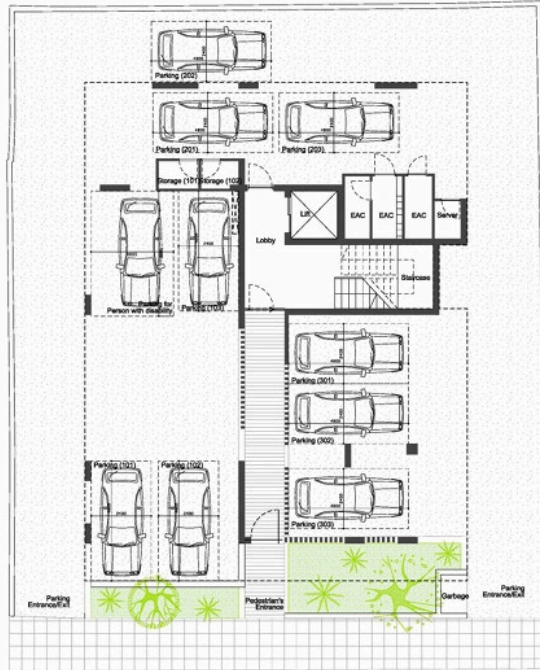






Floor plans

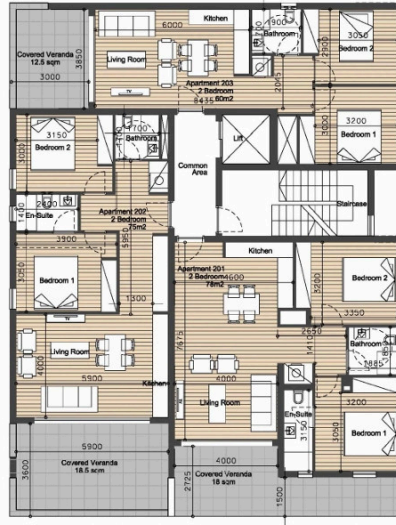
Ground Floor



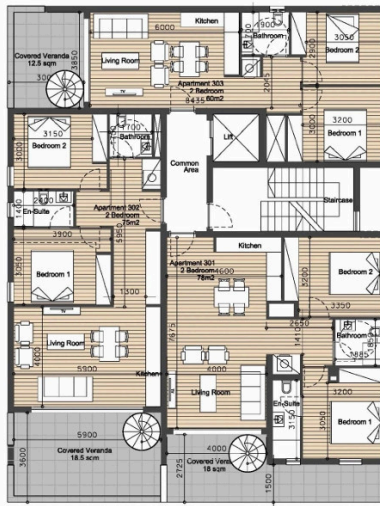
First Floor



Second Floor



Third Floor



Roof Garden

