



Reference 19663

2 Bed Apartment close to Marina Limassol

€1,810,000 +VAT

Limassol Marina, Limassol

2 Bedrooms

2 Bathrooms

85.5 m² Covered

Description

- 2 bedrooms
- 2 W/C
- Covered Area 85.50m²
- Covered Verandas 29m²
- Communal Indoor & Outdoor Pool
- Underground Parking
- Gym & Spa Area
- Bistro
- Children's Playground
- 24h Reception
- Landscaped Gardens
- Energy Efficiency "A"
- 330 meters from Limassol downtown and the Marina

Covered veranda	29 m ²
Parking spaces	1
Energy efficiency rating	A
Year of construction	2028
Status	Under construction



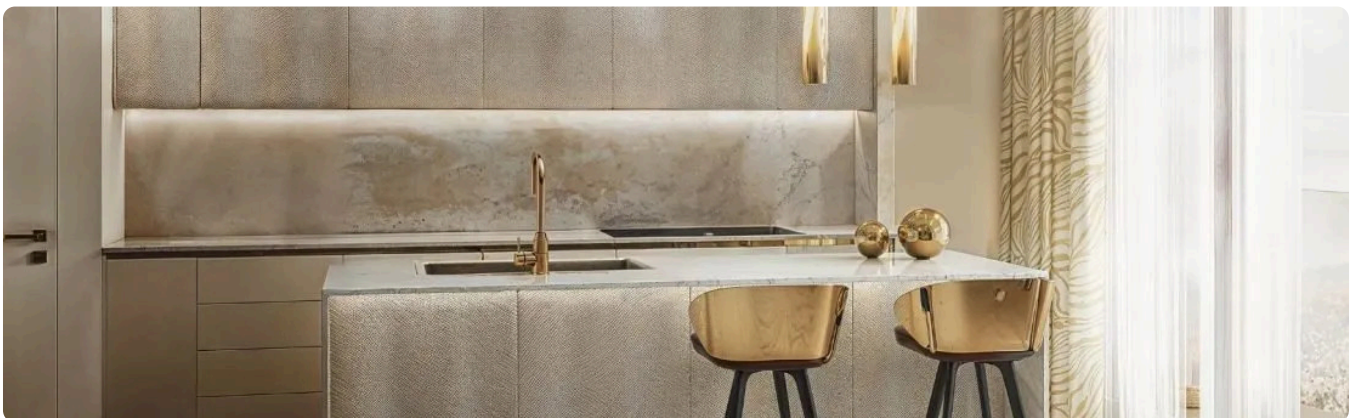
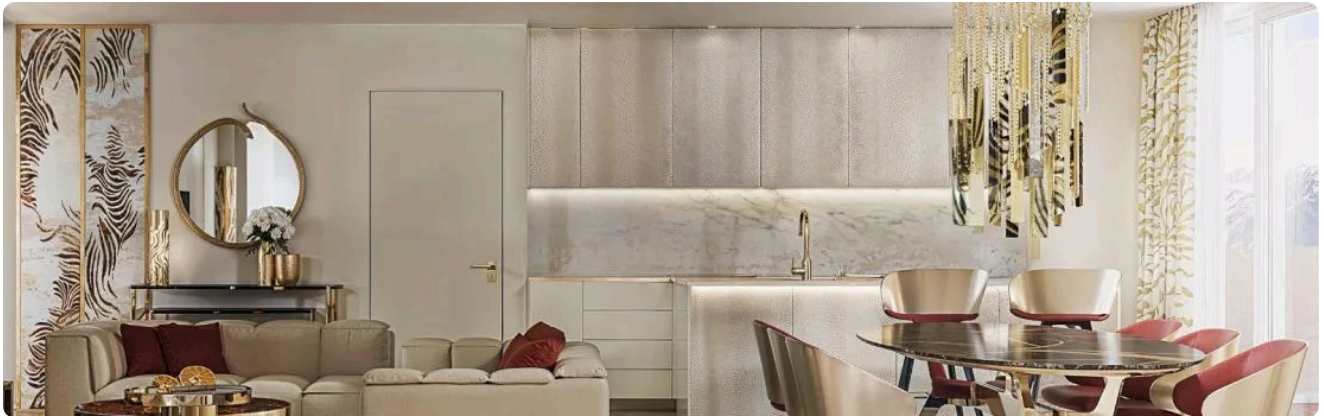
Facilities

- ✓ Parking · Underground
 - ✓ Pool · Communal
 - ✓ Indoor pool · Communal, heated
 - ✓ Childrens playground
 - ✓ Gym
 - ✓ Spa
-

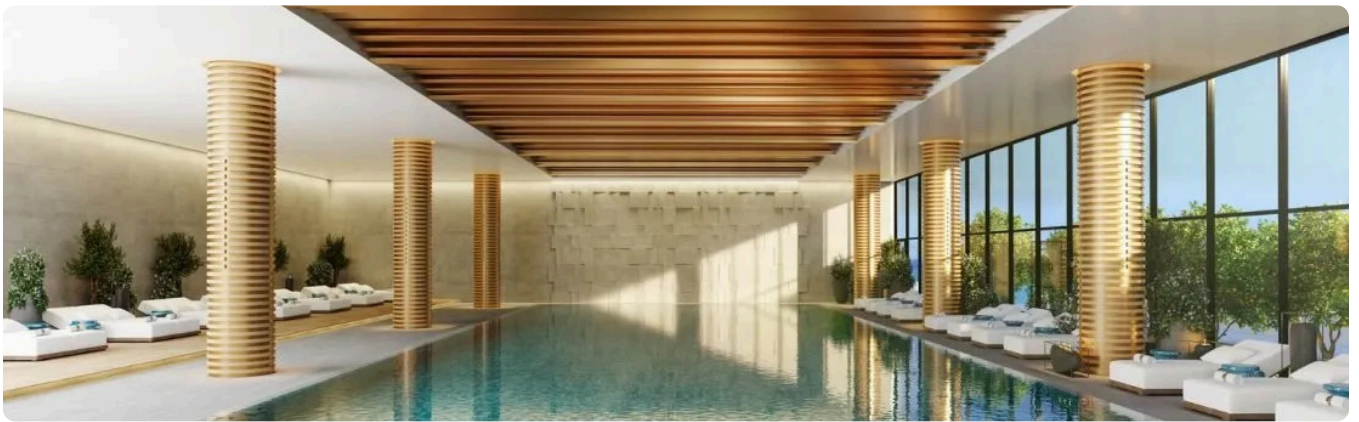
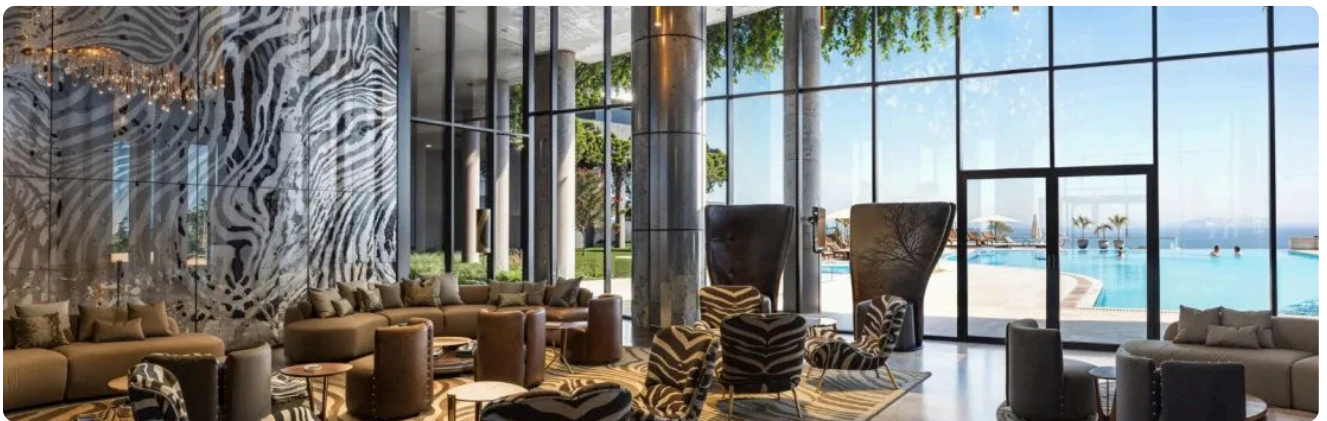
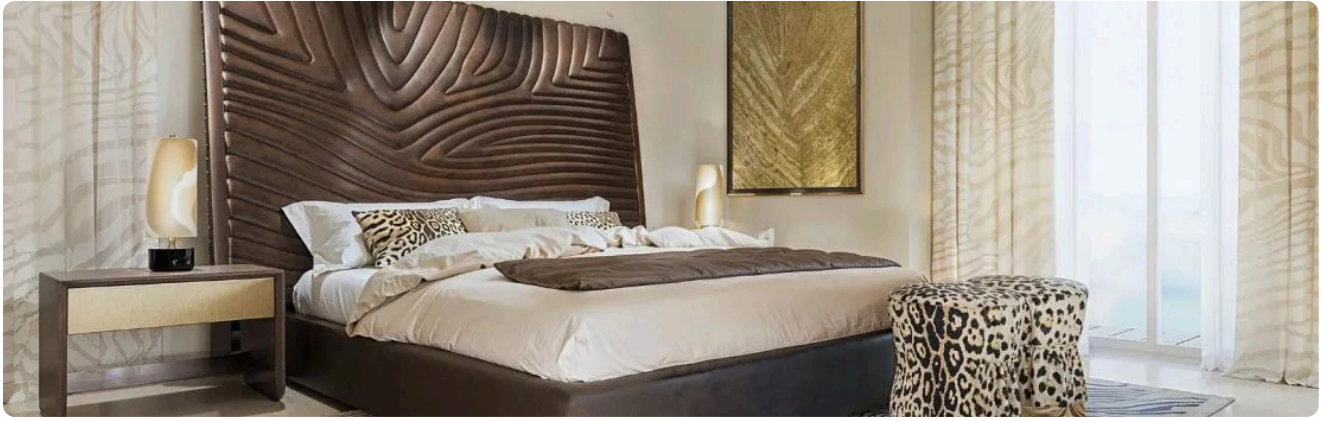
Features

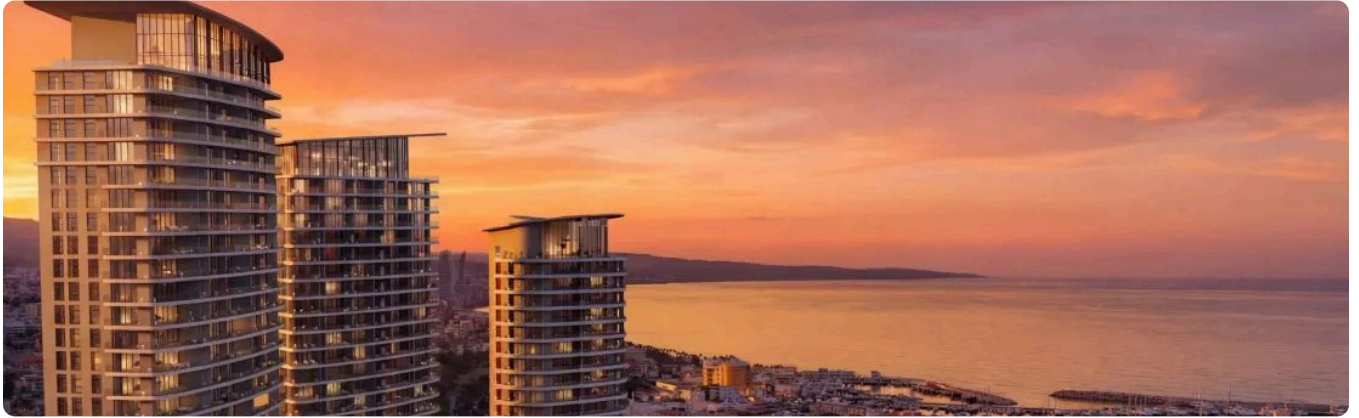
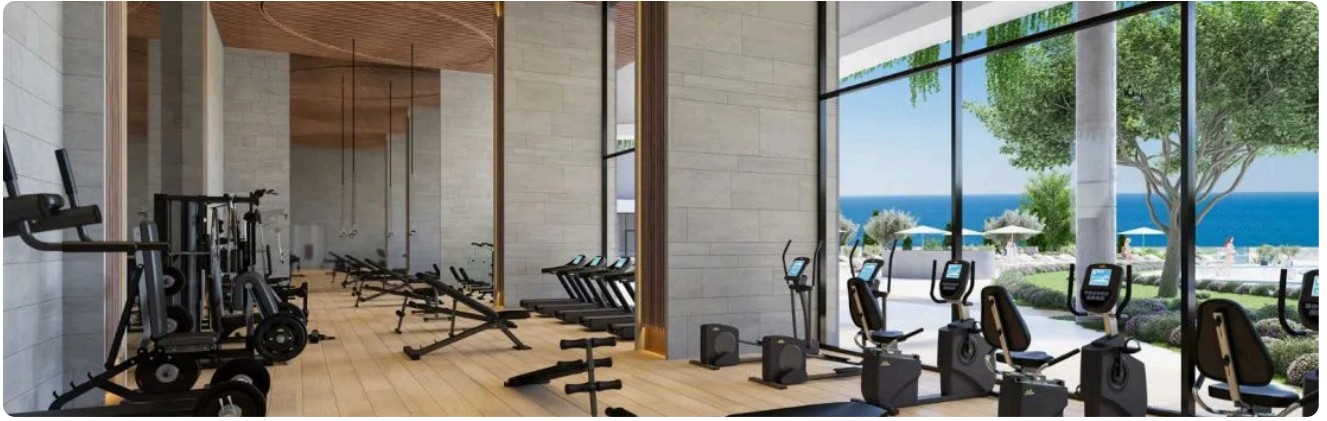
- ✓ Guest WC
 - ✓ Veranda
 - ✓ En suite bathroom
 - ✓ Luxury specifications
 - ✓ Modern design
 - ✓ Sea view
 - ✓ Near amenities
 - ✓ Investment opportunity
 - ✓ Bright
 - ✓ Spacious rooms
 - ✓ Heart of city center
 - ✓ Smart home automation
-

Gallery









Floor plans

APARTMENT PLAN



Mediterranean Sea

