



Reference 19662

3 Bed Apartment close to Marina Limassol

**€2,565,000** +VAT

Limassol Marina, Limassol

3 Bedrooms | 3 Bathrooms | 143 m<sup>2</sup> Covered

## Description

- 3 bedrooms
- 3 W/C
- Covered Area 143m<sup>2</sup>
- Covered Verandas 42m<sup>2</sup>
- Communal Indoor & Outdoor Pool
- Underground Parking
- Gym & Spa Area
- Bistro
- Children's Playground
- 24h Reception
- Landscaped Gardens
- Energy Efficiency "A"
- 330 meters from Limassol downtown and the Marina

Covered veranda	42 m <sup>2</sup>
Parking spaces	1
Energy efficiency rating	A
Year of construction	2028
Status	Under construction



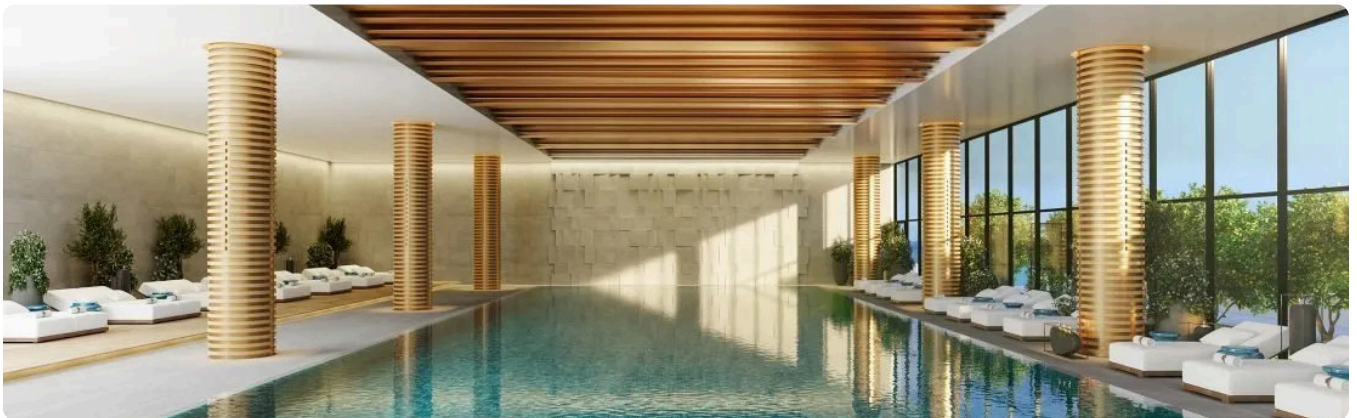
## Facilities

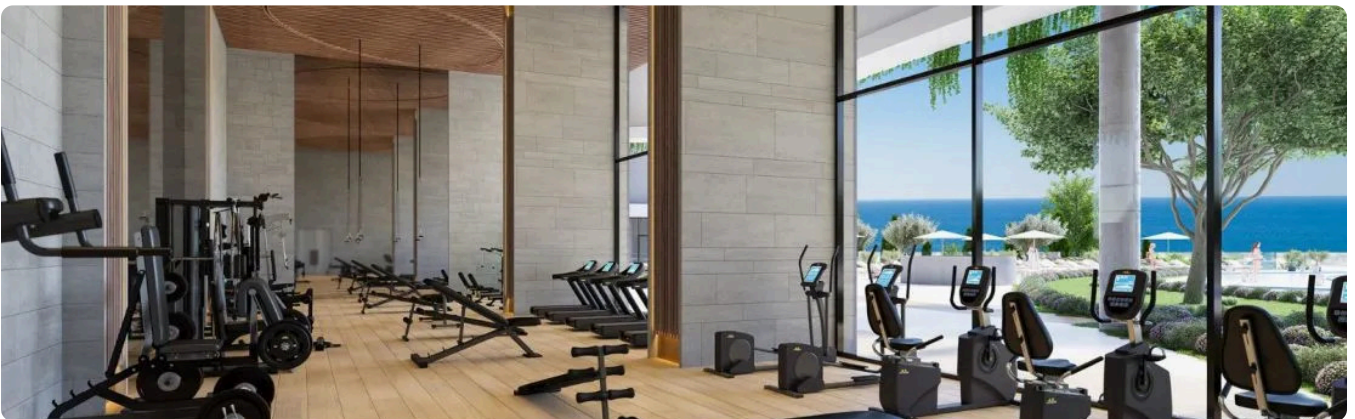
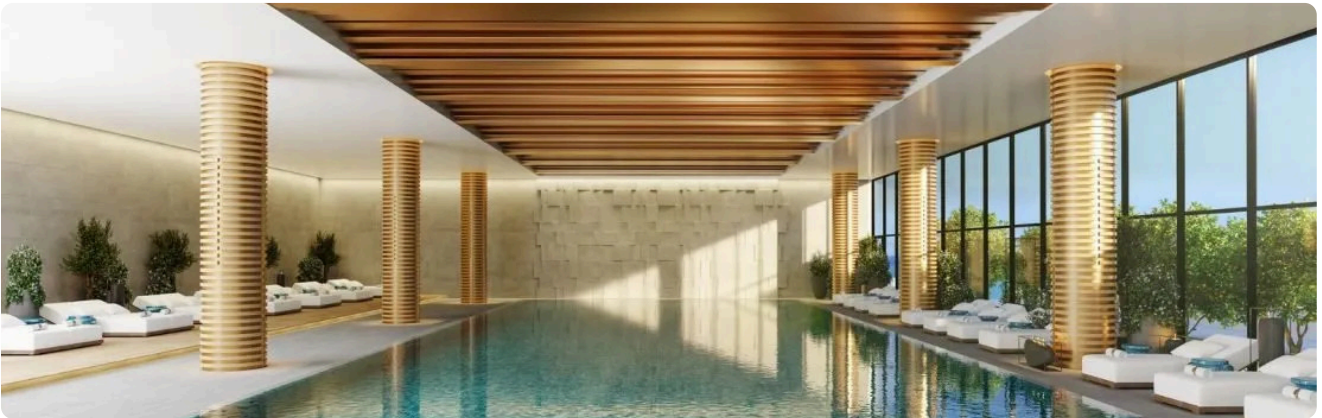
- ✓ Parking · Underground
  - ✓ Pool · Communal
  - ✓ Indoor pool · Communal, heated
  - ✓ Childrens playground
  - ✓ Gym
  - ✓ Spa
- 

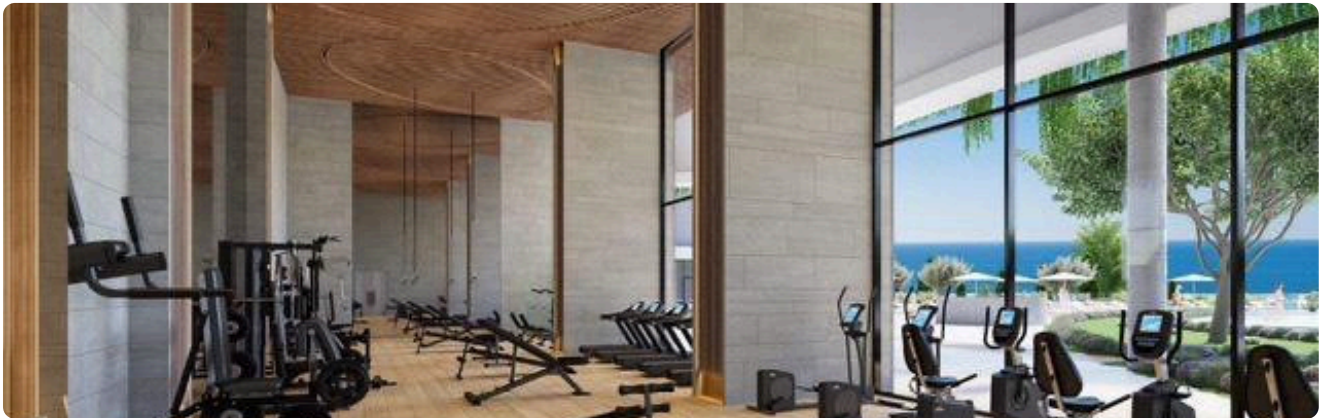
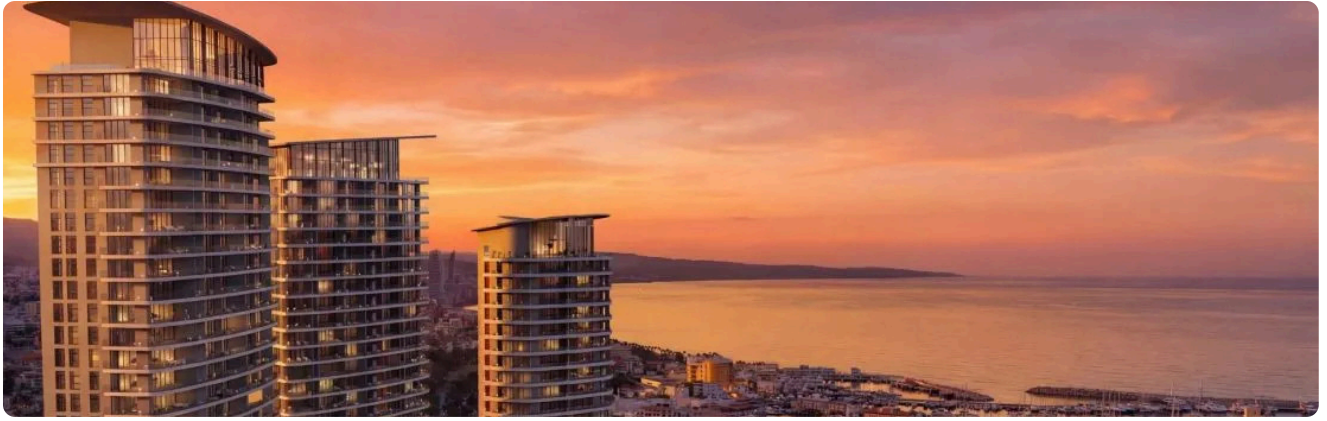
## Features

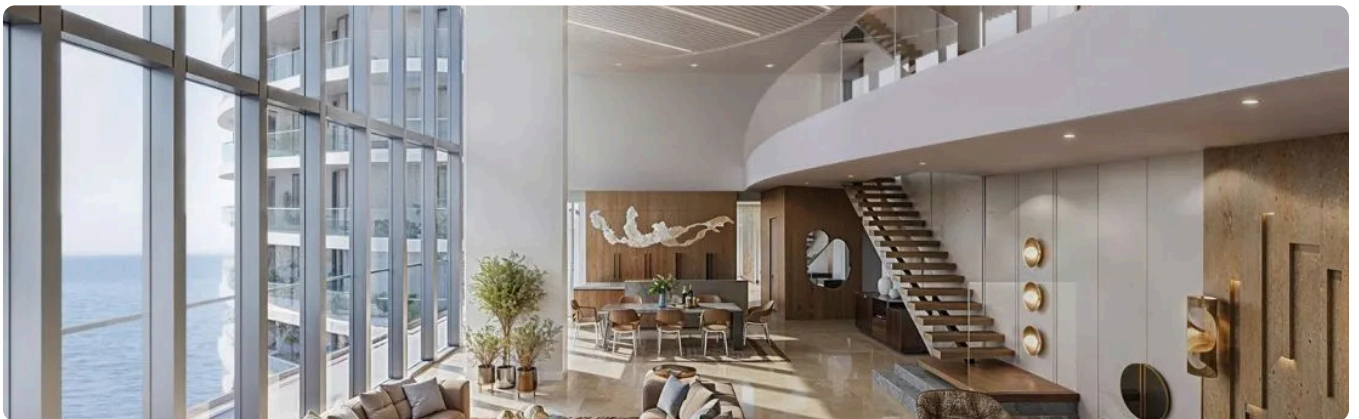
- ✓ Guest WC
  - ✓ Veranda
  - ✓ En suite bathroom
  - ✓ Luxury specifications
  - ✓ Modern design
  - ✓ Sea view
  - ✓ Near amenities
  - ✓ Investment opportunity
  - ✓ Bright
  - ✓ Spacious rooms
  - ✓ Heart of city center
  - ✓ Smart home automation
- 

## Gallery











# Floor plans

