



Reference 19621

3 Bed Detached Villa in Pyla, Larnaca

€405,000 +VAT

Pyla, Larnaca

3 Bedrooms | 3 Bathrooms | 140 m² Covered

Description

- 3 Bedrooms
- 3 W/C
- Internal Area 140m²
- Plot Area 320m²
- Covered Parking
- Swimming Pool

Plot	320 m ²
Parking spaces	1
Energy efficiency rating	A
Year of construction	2027
Status	Under construction



Facilities

✓ Parking · Covered ✓ Pool · Private ✓ Solar photovoltaic panels

Features

✓ Guest WC ✓ En suite shower ✓ Modern design ✓ Near bus route ✓ Near amenities
✓ Roof garden ✓ Open plan ✓ Garden ✓ Internal stairs ✓ Easy access to main roads
✓ Thermal insulation

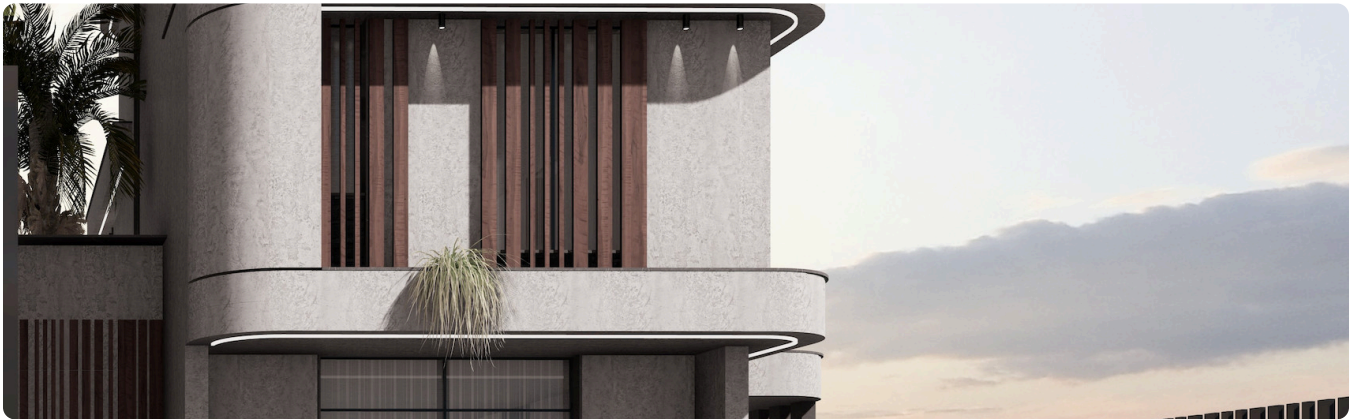
Gallery











Floor plans

