



Reference 19450

Whole Floor Office in Kapsalos, Limassol

€1,239,000 +VAT

Kapsalos, Limassol

2 Bathrooms | 195 m² Covered

Description

- Internal Area 195m²
- Covered Verandas 15m²
- Parking Space
- Reception
- Conference area
- Kitchenette
- Close to several amenities

Covered veranda	15 m ²
Parking spaces	1
Energy efficiency rating	A
Status	Off plan



Facilities

- ✓ Parking · Covered
 - ✓ Elevator
-

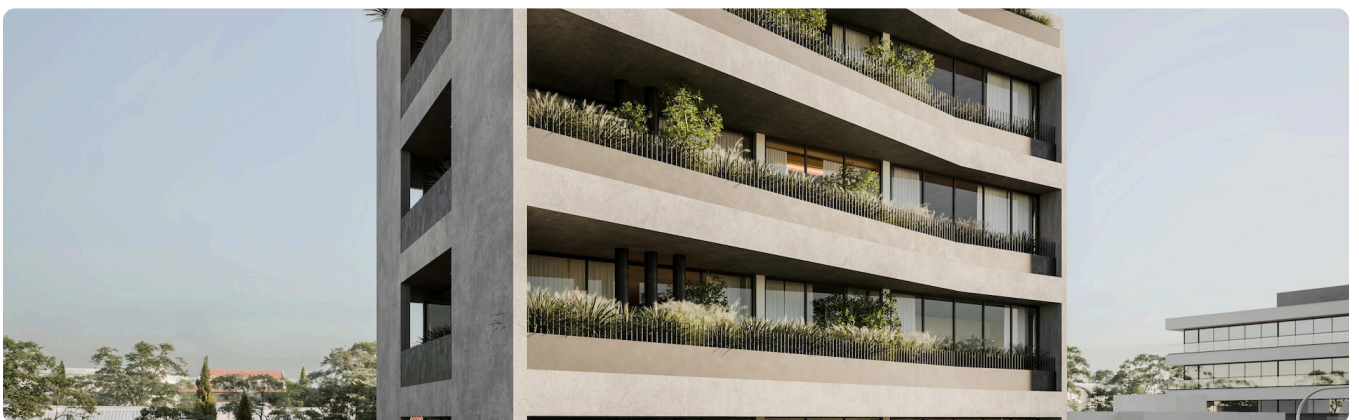
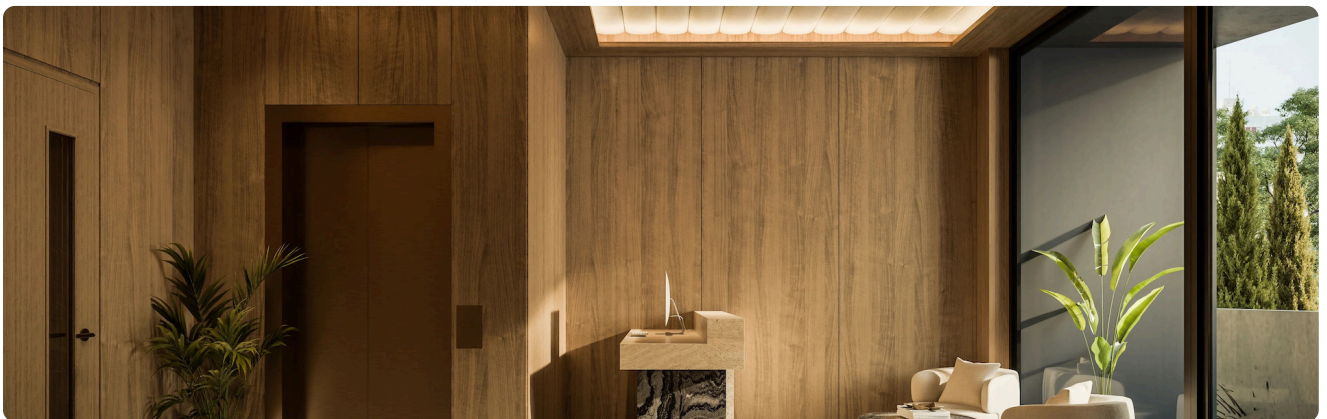
Features

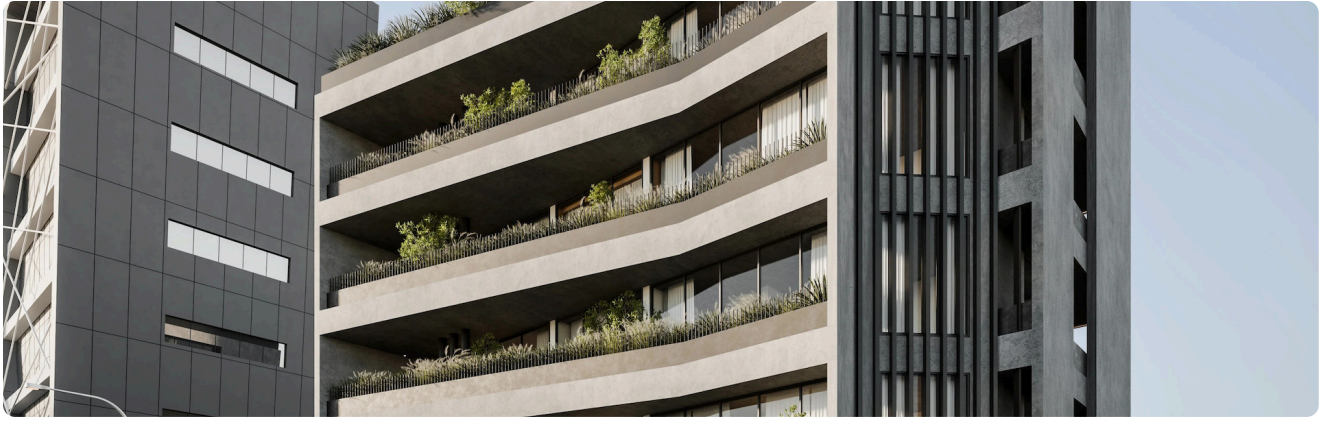
- ✓ Reception
 - ✓ Kitchenette
 - ✓ Ceramic tiles
 - ✓ Easy access to main roads
 - ✓ Thermal insulation
 - ✓ Near amenities
 - ✓ High ceilings
 - ✓ Closed offices
 - ✓ Conference hall
 - ✓ Lobby
 - ✓ Veranda
 - ✓ Server room
-

Gallery









Floor plans





SECOND FLOOR 



THIRD FLOOR 



