



Reference 19411

## 4 Bed Detached House in Erimi, Limassol

**€475,000** +VAT

Erimi, Limassol

4 Bedrooms | 3 Bathrooms | 205 m<sup>2</sup> Covered

### Description

- 4 bedrooms
- 3 W/C
- Internal Area 205m<sup>2</sup>
- Plot Area 223m<sup>2</sup>
- Covered Parking
- Energy Efficiency "A"
- 5 minutes from the sea

Plot	223 m <sup>2</sup>
Parking spaces	1
Energy efficiency rating	A
Year of construction	2027
Status	Under construction



## Facilities

✓ Parking · Covered

---

## Features

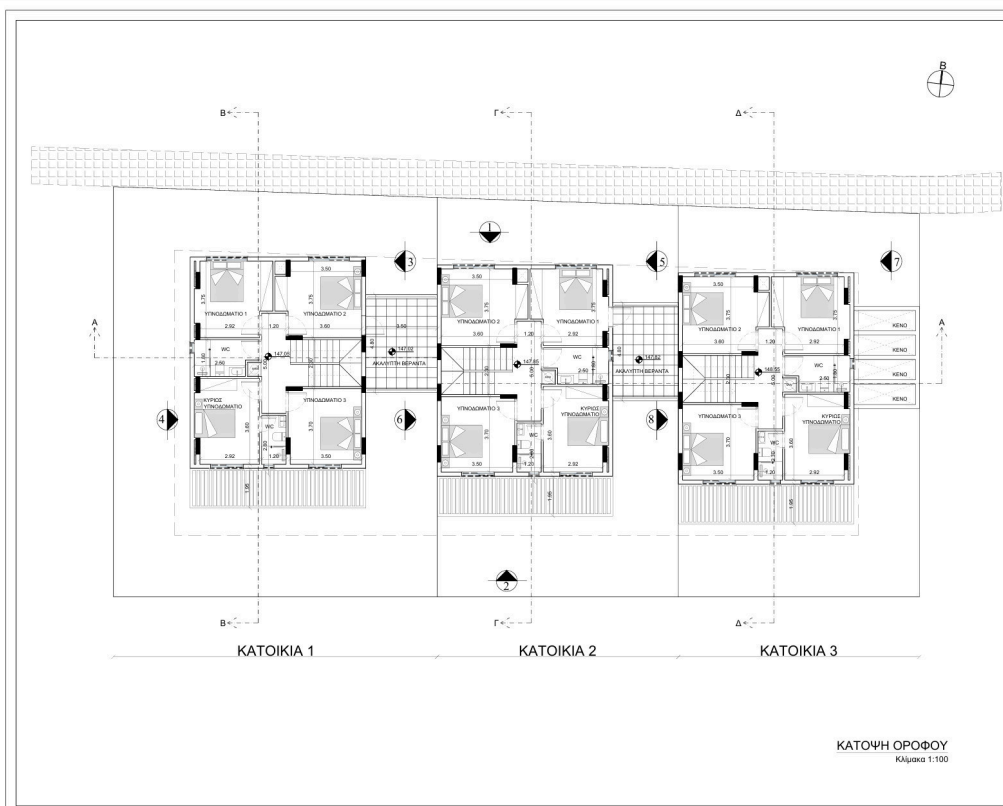
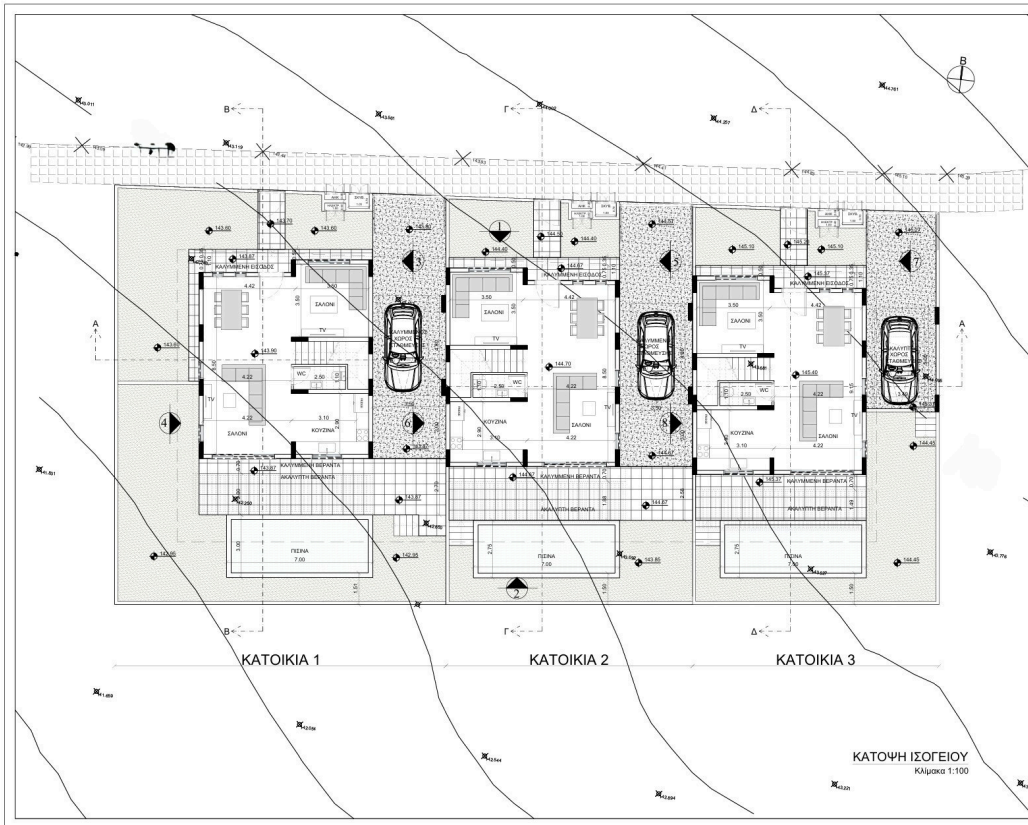
✓ Guest WC   ✓ Veranda   ✓ Quiet area   ✓ En suite bathroom   ✓ Modern design  
✓ Near amenities   ✓ Open plan   ✓ Internal stairs   ✓ Easy access to highway   ✓ Thermal insulation

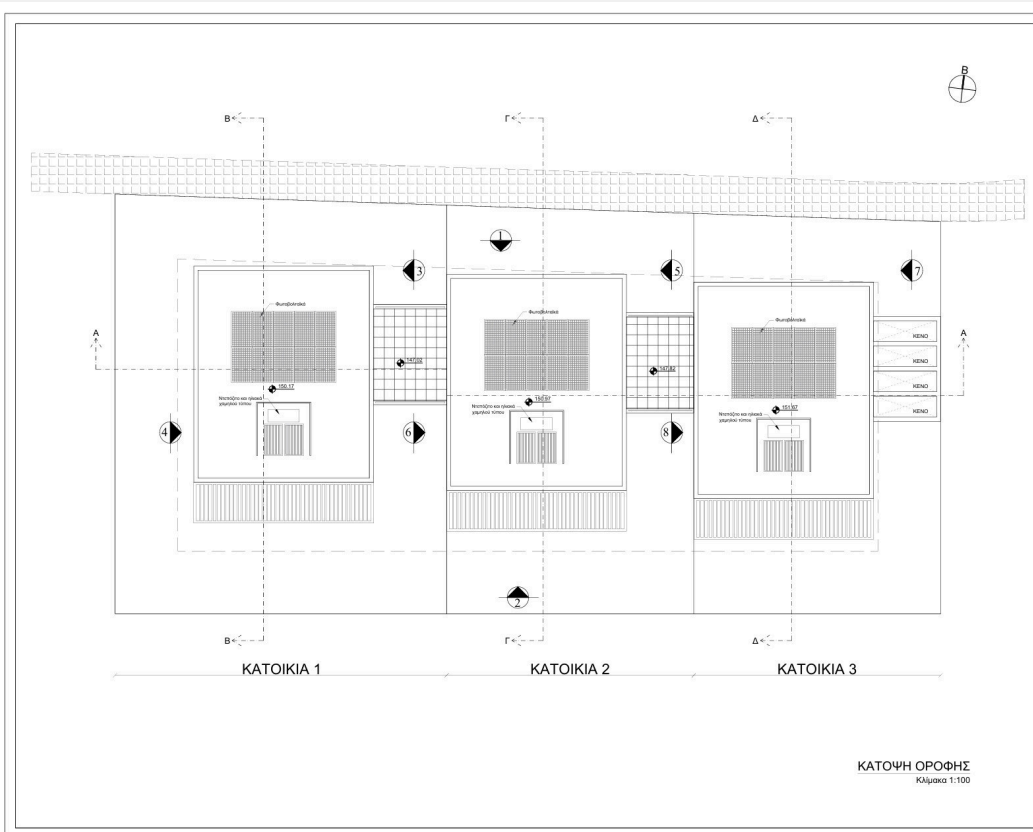
---

## Gallery



# Floor plans





ΚΑΤΩΦΗ ΟΡΟΦΗΣ  
Κλίμακα 1:100

