



Reference 19230

Luxury 2 Bed Penthouse Apartment with roof garden in
Germasogeia, Limassol

€555,000 +VAT

Germasogia, Limassol

2 Bedrooms | 2 Bathrooms | 82 m² Covered

Description

- 2 bedrooms
- 2 W/C
- Internal Area 82m²
- Covered Verandas 14m²
- Roof Garden 57m²
- A/C
- Communal Swimming Pool
- Secure Gated Community
- Club House
- Outdoor Playground & Sports Facilities
- Dog Park
- Residents' Lounge & Co-working
- Gym
- Photovoltaic Panels

Covered veranda	14 m ²
Roof garden	57 m ²
Parking spaces	1
Energy efficiency rating	A
Year of construction	2027
Status	Under construction



Facilities

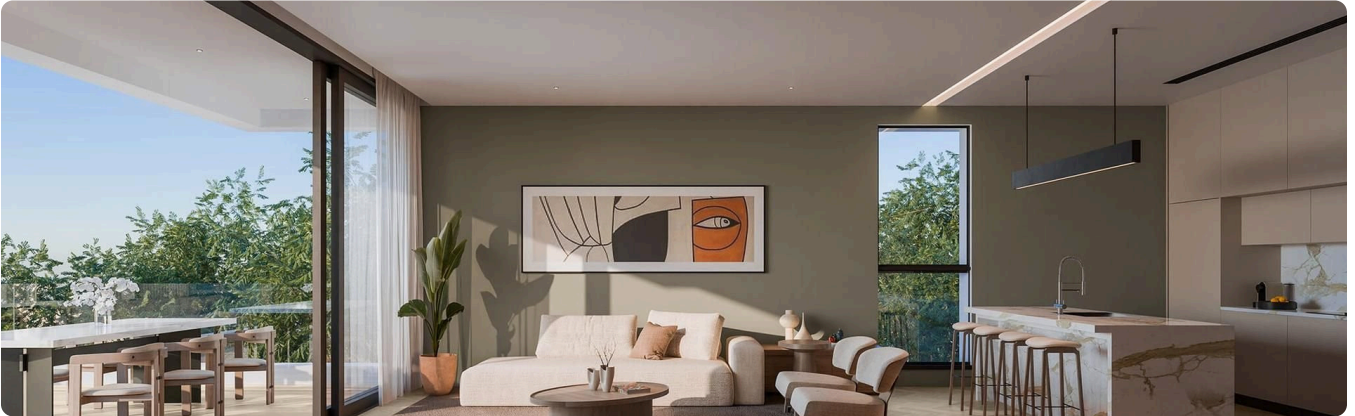
- ✓ Aircondition · Central system
 - ✓ Heating · Provision
 - ✓ Parking · Covered
 - ✓ Pool · Communal
 - ✓ Childrens playground
 - ✓ Gym
 - ✓ Gated complex
 - ✓ Solar photovoltaic panels
-

Features

- ✓ Veranda
 - ✓ Laminate flooring
 - ✓ Ceramic tiles
 - ✓ Luxury specifications
 - ✓ Modern design
 - ✓ Roof garden
 - ✓ Double glazing
 - ✓ Open plan
 - ✓ Pressurized water system
 - ✓ Electric car charger (provision)
 - ✓ Easy access to highway
 - ✓ Sound insulation
 - ✓ Thermal insulation
 - ✓ Smart home automation
-

Gallery

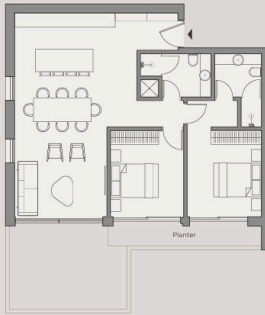






Floor plans

2 Bedroom Apartment

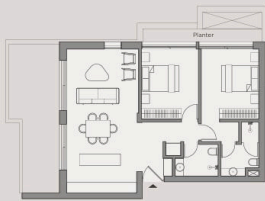


Additional garden area (ground floor only)	61-133m ²
Additional roof garden area (top floor only)	57-58m ²
Internal area	81-91m ²
External covered areas	8-20m ²
External uncovered areas	3-7m ²
Other Areas	9-20m ²
Total Covered Area	108-149m ²
Total Areas	108-261m ²
Bedrooms	2
Bathrooms	2
Storage room	1



TYPE A: BLOCK A, BLOCK B

Living / Kitchen	3.88 x 8.50m
Bedroom 1	3.10 x 3.60m
Bedroom 2	3.05 x 3.60m



TYPE B: BLOCK C

Living / Kitchen	3.85 x 7.70m
Bedroom 1	3.05 x 3.80m
Bedroom 2	3.05 x 3.80m

1 Bedroom Apartment



Additional garden area (ground floor only)	31-124m ²
Internal area	53-54m ²
External covered areas	8-14m ²
Other Areas	6-11m ²
Total Covered Area	68-78m ²
Total Areas	68-202m ²
Bedrooms	1
Bathrooms	1
Storage room	1



TYPE A: BLOCK A, BLOCK B

Living / Kitchen	3.85 x 6.80m
Bedroom 1	3.05 x 3.60m



TYPE B: BLOCK C

Living / Kitchen	4.35 x 6.85m
Bedroom 1	3.05 x 3.80m

