



Reference 19171

1 Bed Penthouse Apartment in Palodia

€175,000 +VAT

Palodia Village, Limassol

1 Bedroom | 1 Bathroom | 50 m² Covered

Description

- 1 Bedroom
- 1 W/C
- Internal Area 50m²
- Covered Veranda 11.4m²
- Parking
- Storage
- Energy Efficiency "A"

Covered veranda	11.4 m ²
Parking spaces	1
Energy efficiency rating	A
Year of construction	2026
Status	Under construction



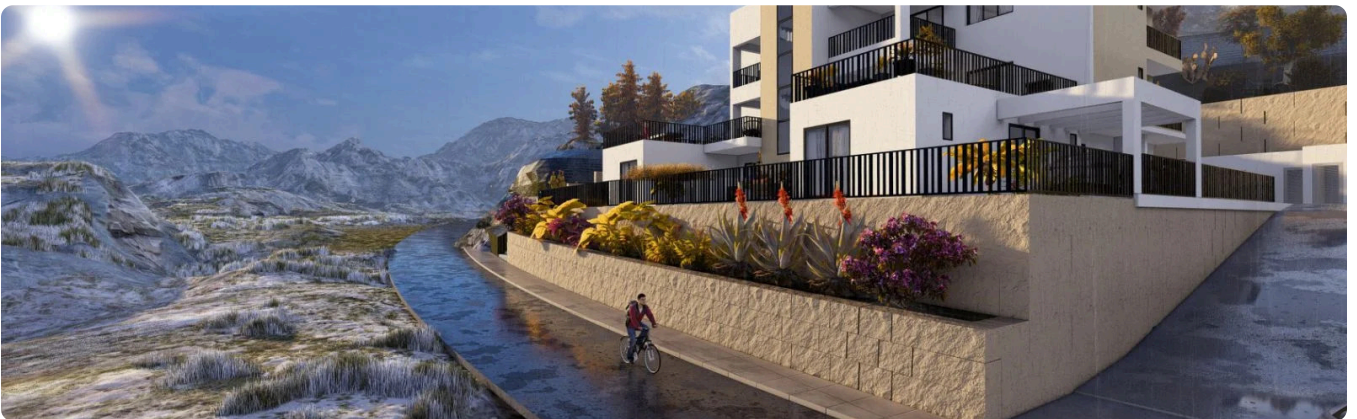
Facilities

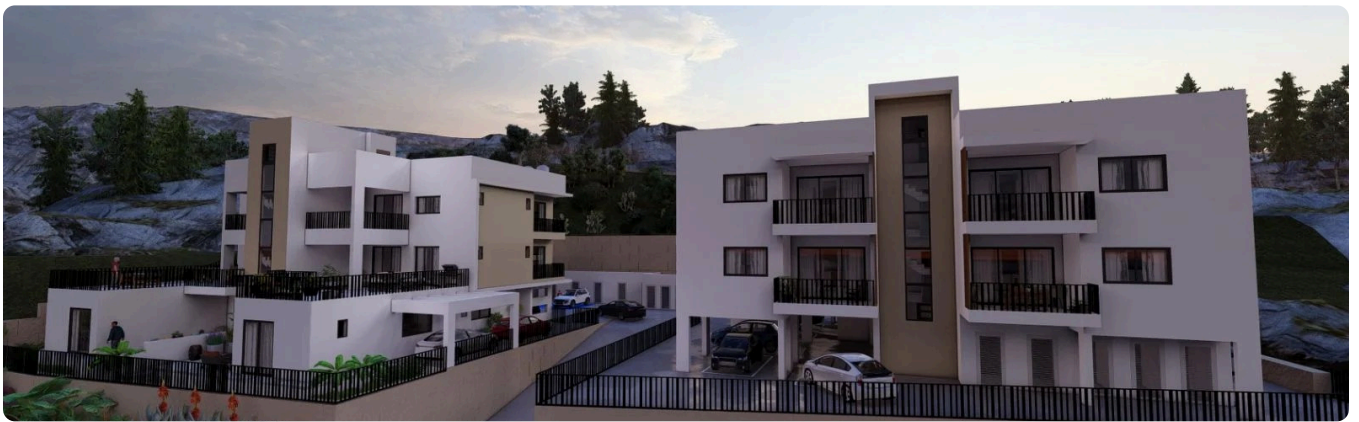
- ✓ Aircondition · Provision
 - ✓ Parking · Covered
 - ✓ Elevator
 - ✓ Solar water heater
 - ✓ Solar photovoltaic panels
-

Features

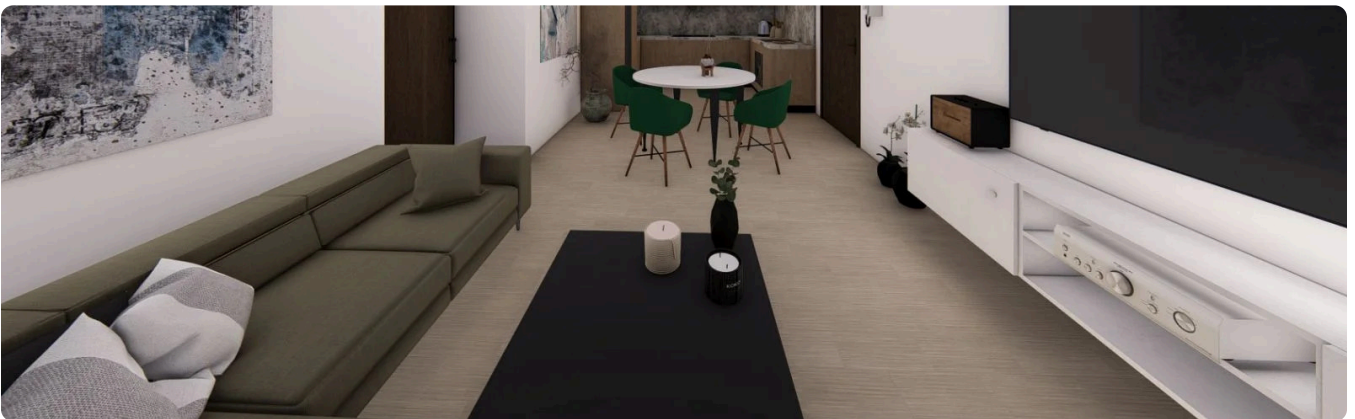
- ✓ Veranda
 - ✓ Quiet area
 - ✓ Near amenities
 - ✓ Double glazing
 - ✓ Shutters, electric (provision)
 - ✓ Easy access to highway
 - ✓ Thermal insulation
-

Gallery



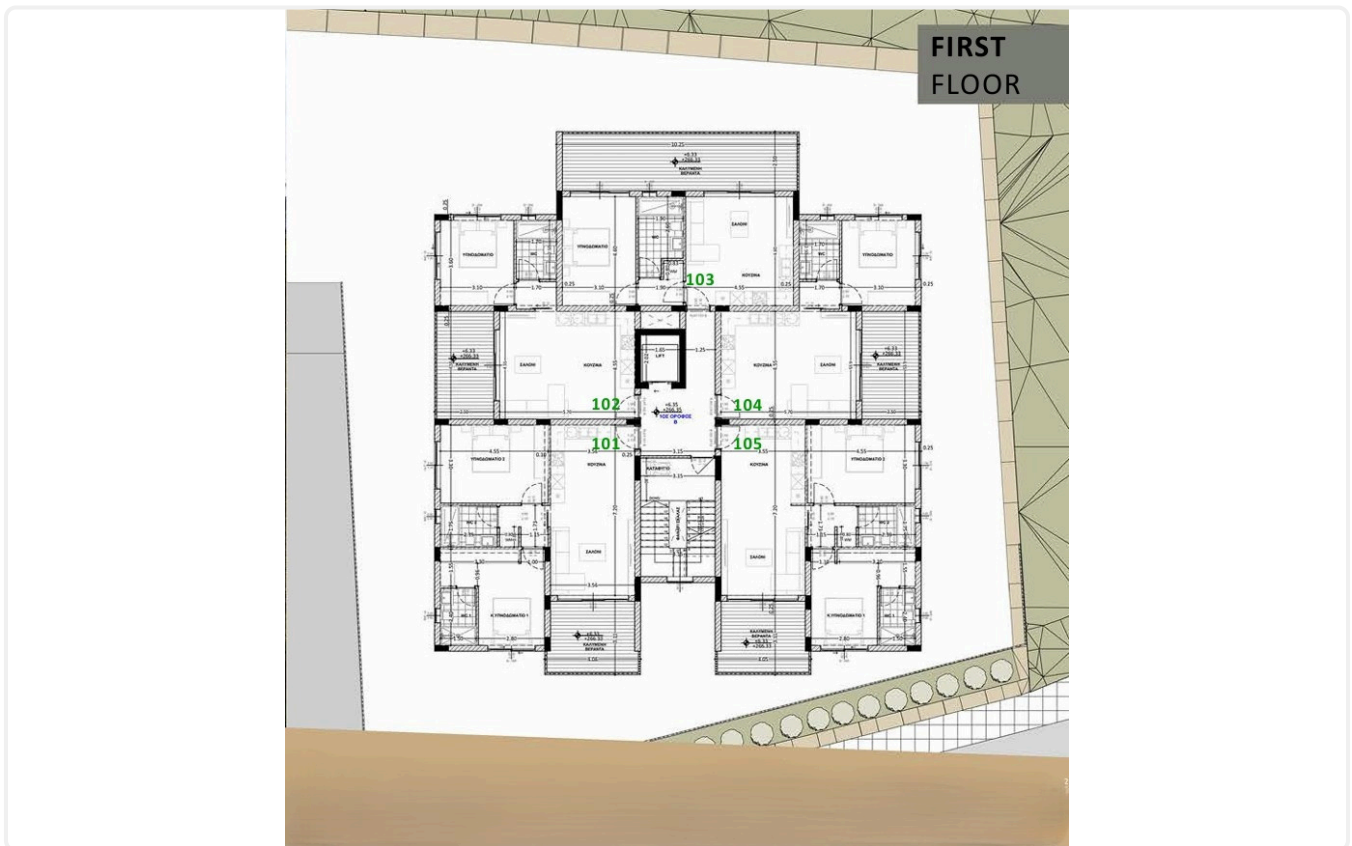
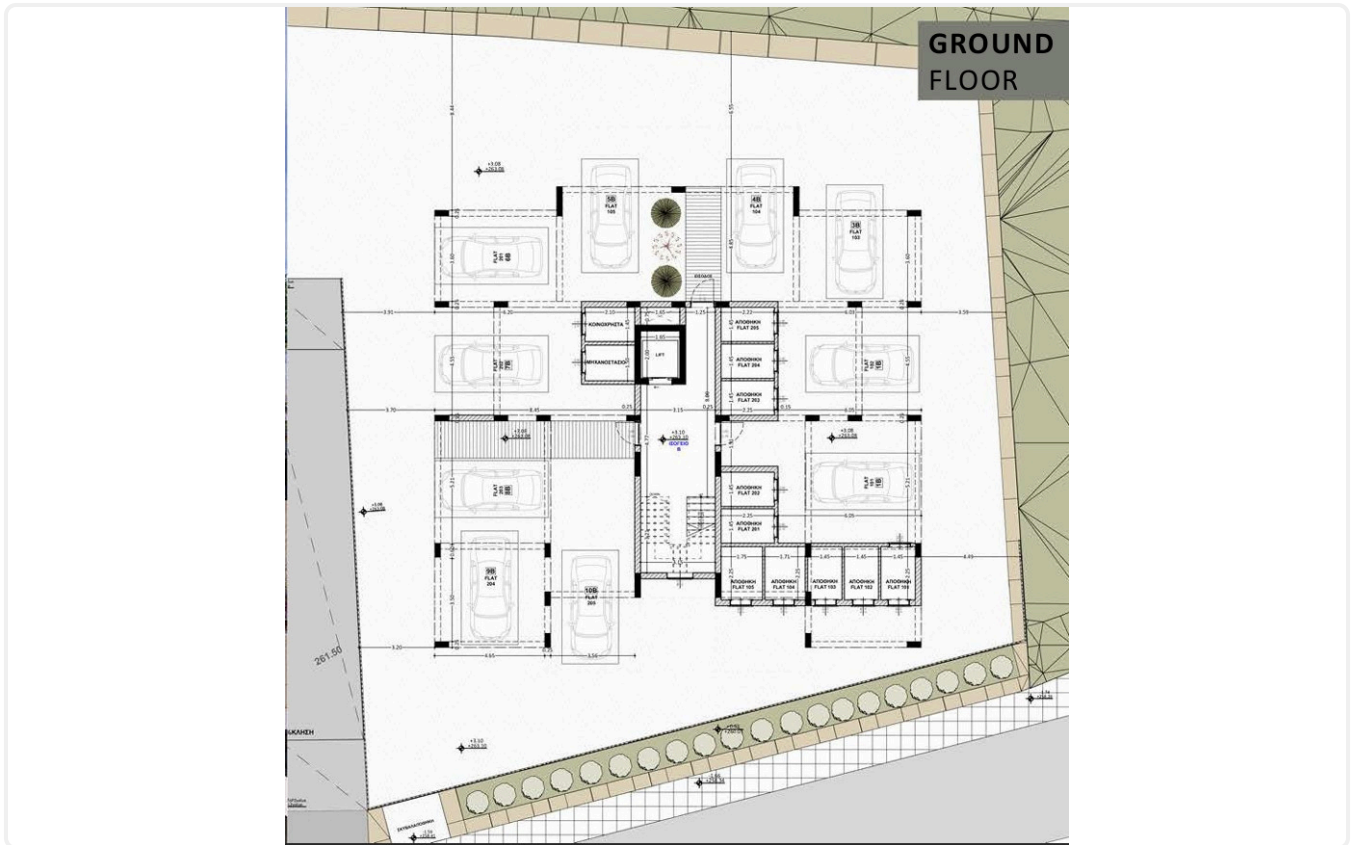








Floor plans



**SECOND
FLOOR**

