



Reference 19168

## 1 Bed Penthouse Apartment in Palodia

**€175,000** +VAT

Palodia Village, Limassol

1 Bedroom | 1 Bathroom | 50 m<sup>2</sup> Covered

### Description

- 1 Bedroom
- 1 W/C
- Internal Area 50m<sup>2</sup>
- Covered Veranda 11.4m<sup>2</sup>
- Parking
- Storage
- Energy Efficiency "A"

Covered veranda	11.4 m <sup>2</sup>
Parking spaces	1
Energy efficiency rating	A
Year of construction	2026
Status	Under construction



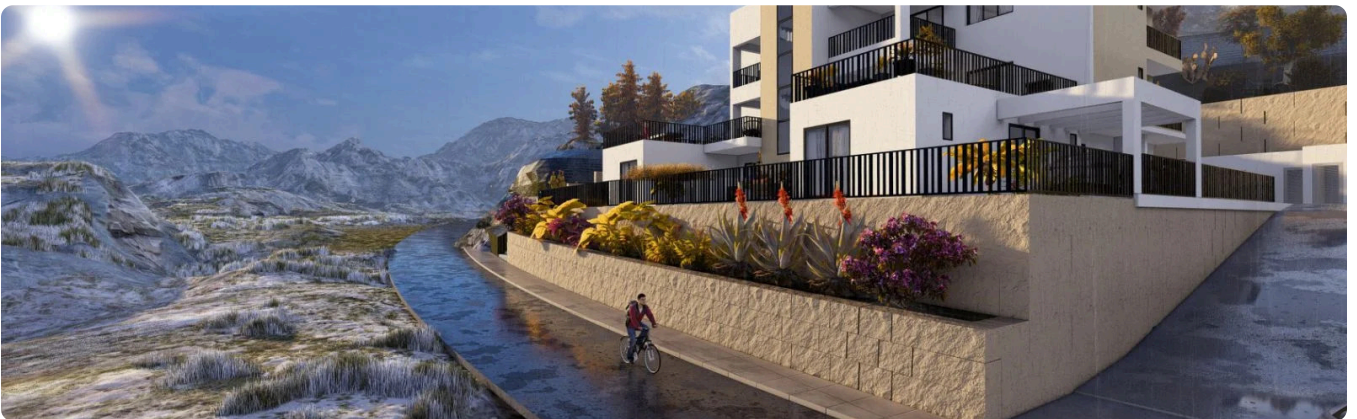
## Facilities

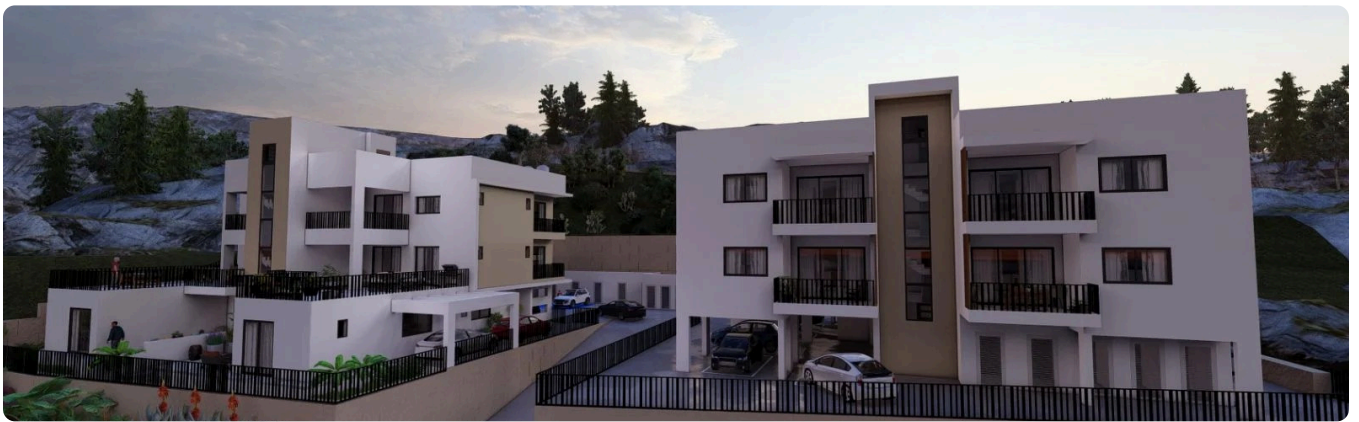
- ✓ Aircondition · Provision
  - ✓ Parking · Covered
  - ✓ Elevator
  - ✓ Solar water heater
  - ✓ Solar photovoltaic panels
- 

## Features

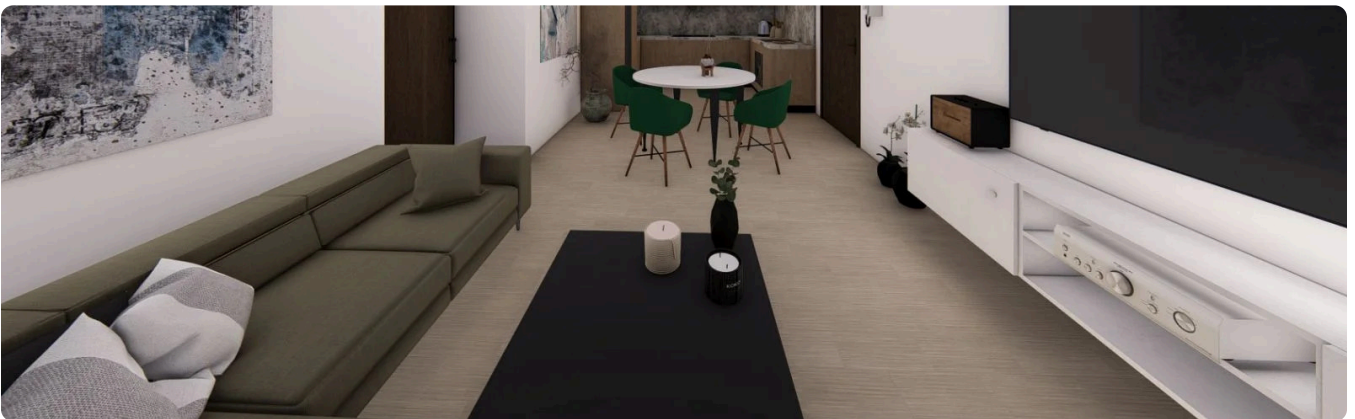
- ✓ Veranda
  - ✓ Quiet area
  - ✓ Near amenities
  - ✓ Double glazing
  - ✓ Shutters, electric (provision)
  - ✓ Easy access to highway
  - ✓ Thermal insulation
- 

## Gallery



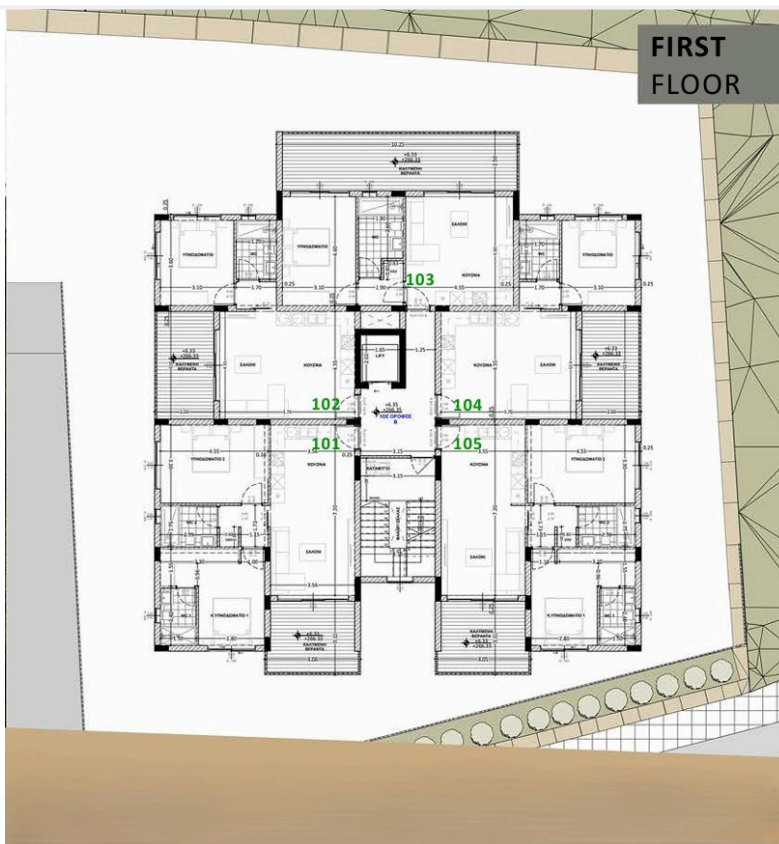
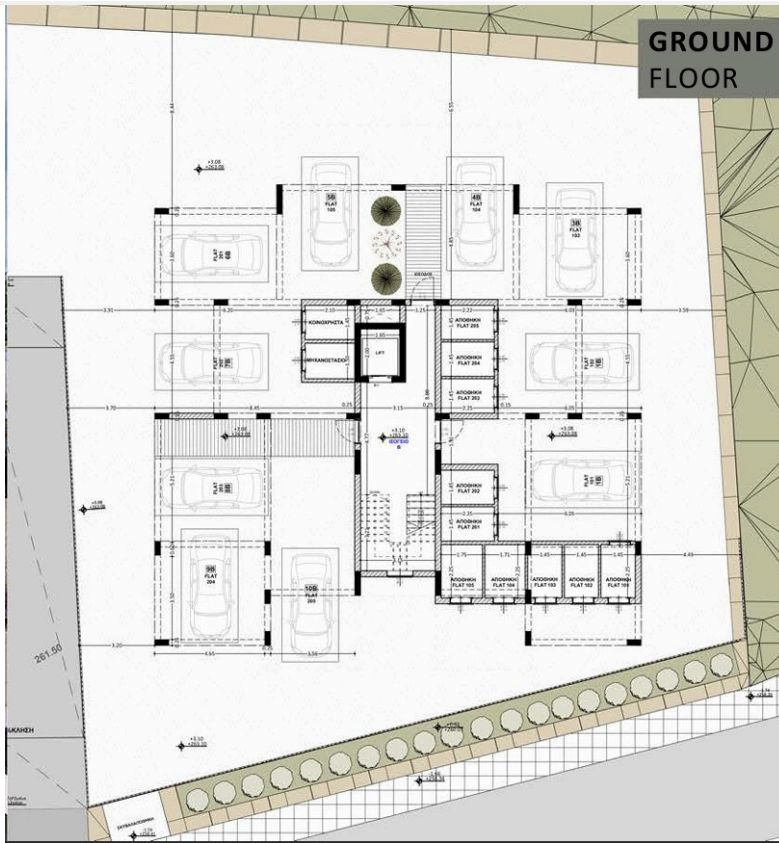








# Floor plans



**SECOND  
FLOOR**

