



Reference 19167

## 2 Bed Penthouse Apartment in Palodia

**€275,000** +VAT

Palodia Village, Limassol

2 Bedrooms | 2 Bathrooms | 75 m<sup>2</sup> Covered

### Description

- 2 Bedrooms
- 2 W/C
- Internal Area 75m<sup>2</sup>
- Covered Veranda 12m<sup>2</sup>
- Parking
- Storage
- Energy Efficiency "A"

Covered veranda	12 m <sup>2</sup>
Parking spaces	1
Energy efficiency rating	A
Year of construction	2026
Status	Under construction



## Facilities

- ✓ Aircondition · Provision
  - ✓ Parking · Covered
  - ✓ Elevator
  - ✓ Solar water heater
  - ✓ Solar photovoltaic panels
- 

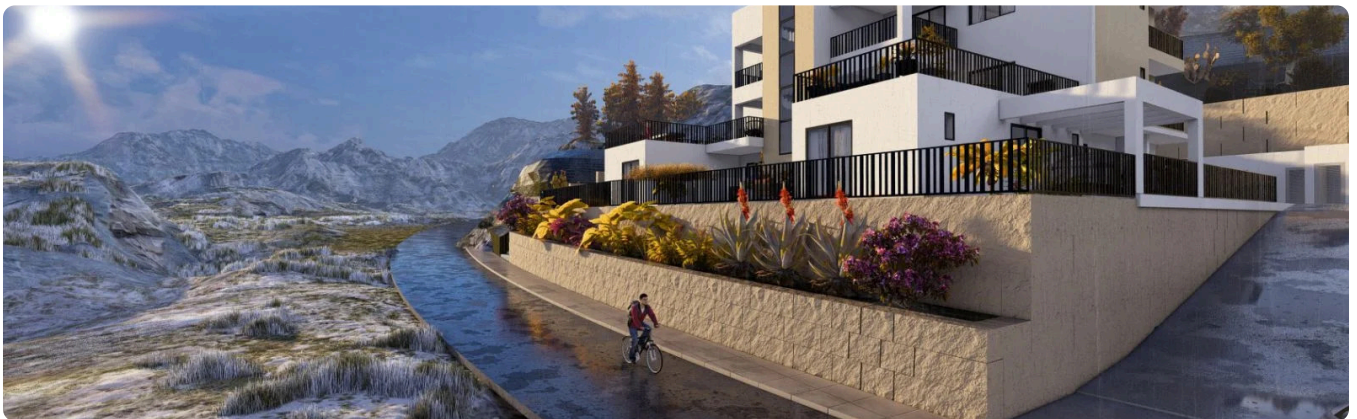
## Features

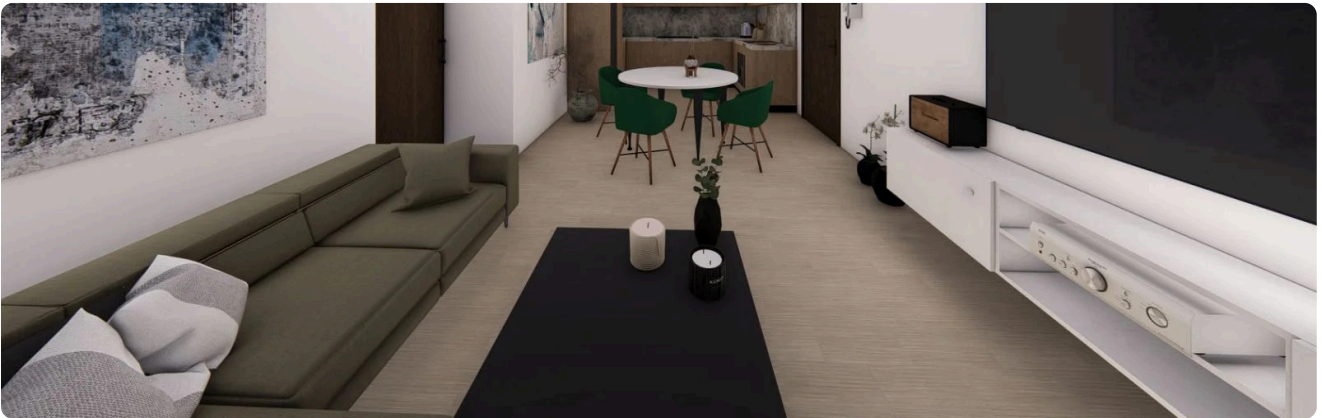
- ✓ Veranda
  - ✓ Quiet area
  - ✓ Near amenities
  - ✓ Double glazing
  - ✓ Shutters, electric (provision)
  - ✓ Easy access to highway
  - ✓ Thermal insulation
- 

## Gallery











# Floor plans

