



Reference 19151

## Ground Floor 3 Bed Apartment in Palodia

**€320,000** +VAT

Palodia Village, Limassol

3 Bedrooms | 2 Bathrooms | 90 m<sup>2</sup> Covered

### Description

- 3 Bedrooms
- 2 W/C
- Internal Area 90m<sup>2</sup>
- Covered Veranda 8.5m<sup>2</sup>
- Uncovered Veranda 21m<sup>2</sup>
- Parking
- Storage
- Energy Efficiency "A"

Covered veranda	8.5 m <sup>2</sup>
Uncovered veranda	21 m <sup>2</sup>
Parking spaces	1
Energy efficiency rating	A
Year of construction	2026
Status	Under construction



## Facilities

- ✓ Aircondition · Provision
  - ✓ Parking · Covered
  - ✓ Elevator
  - ✓ Solar water heater
  - ✓ Solar photovoltaic panels
- 

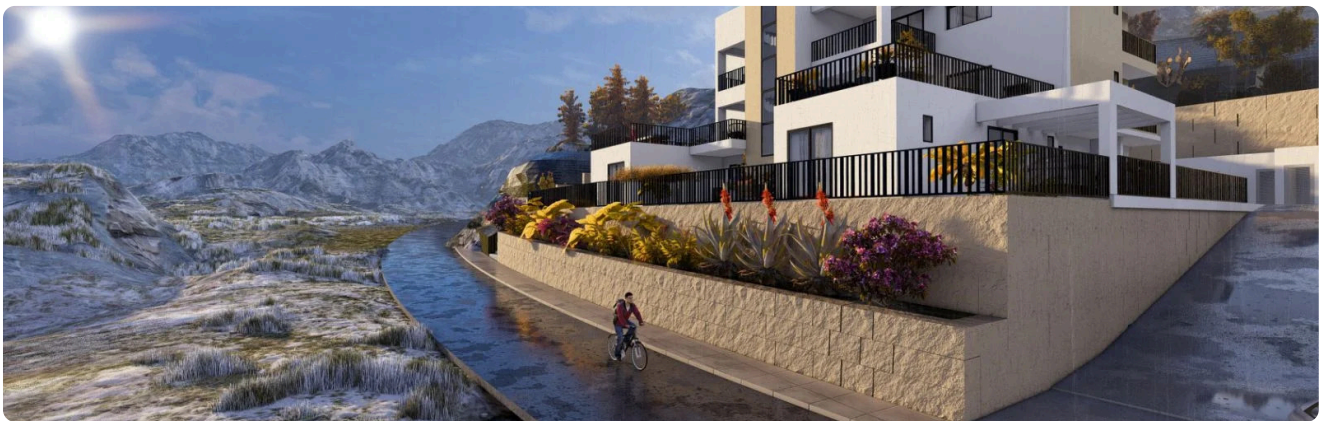
## Features

- ✓ Veranda
  - ✓ Quiet area
  - ✓ Near amenities
  - ✓ Double glazing
  - ✓ Shutters, electric (provision)
  - ✓ Easy access to highway
  - ✓ Thermal insulation
- 

## Gallery



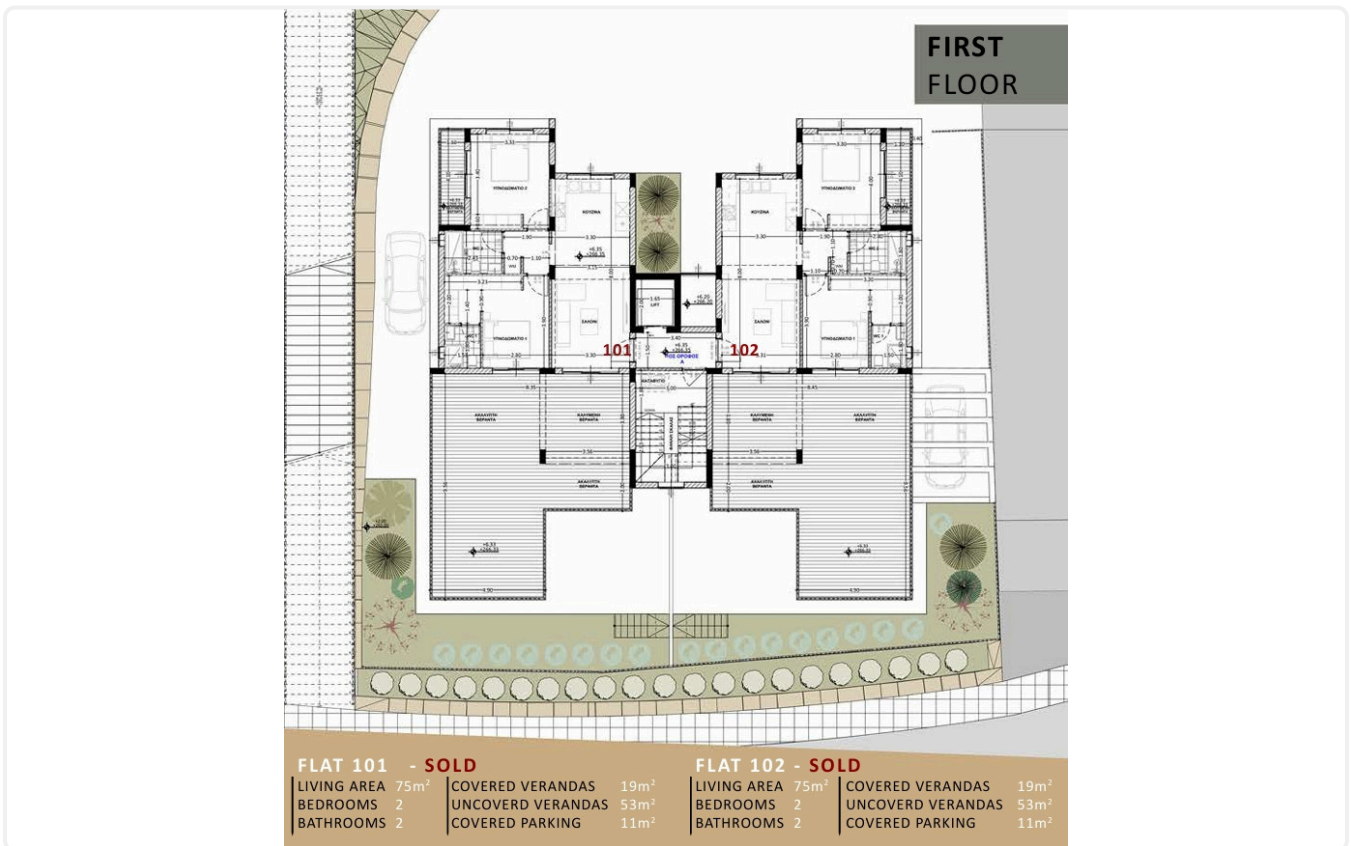
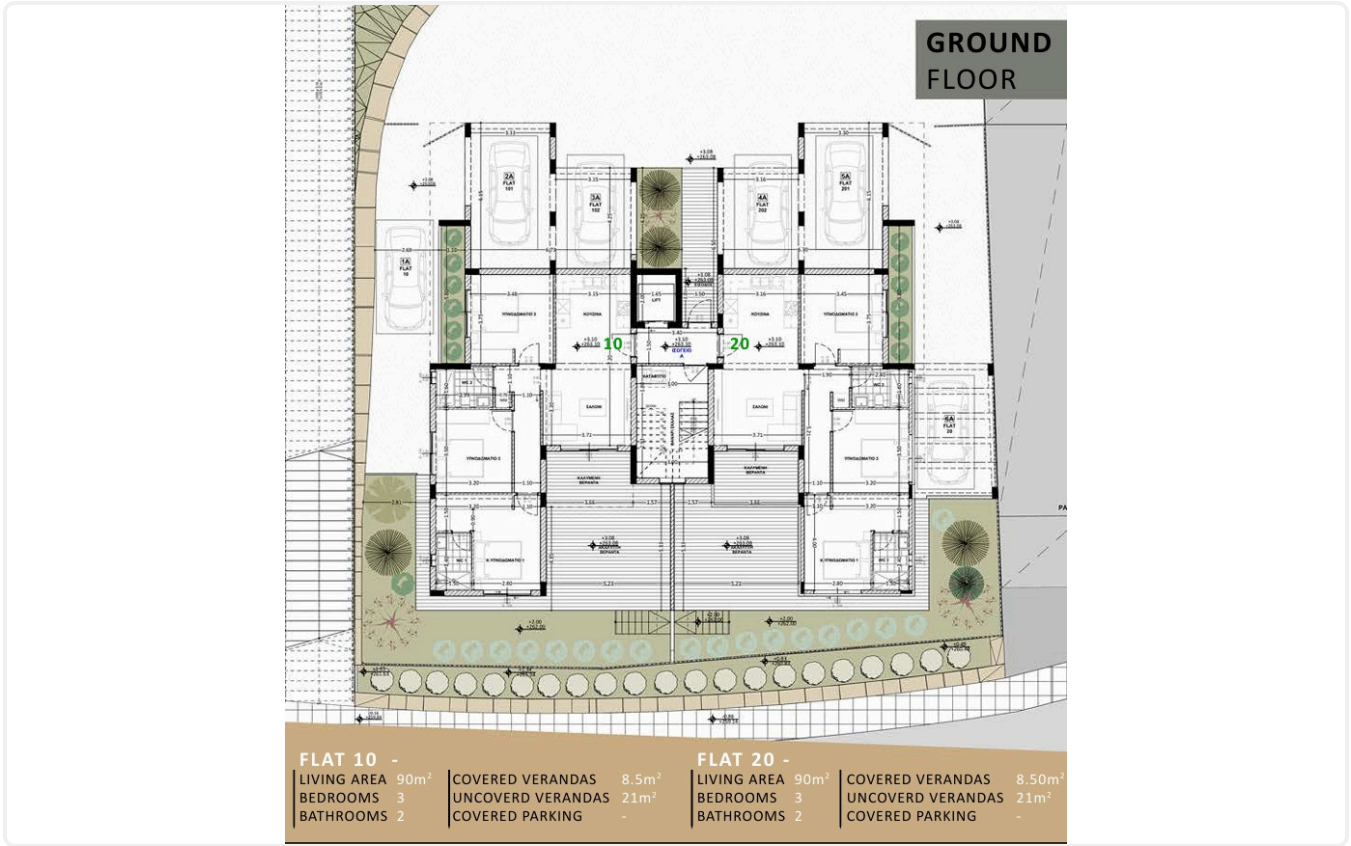




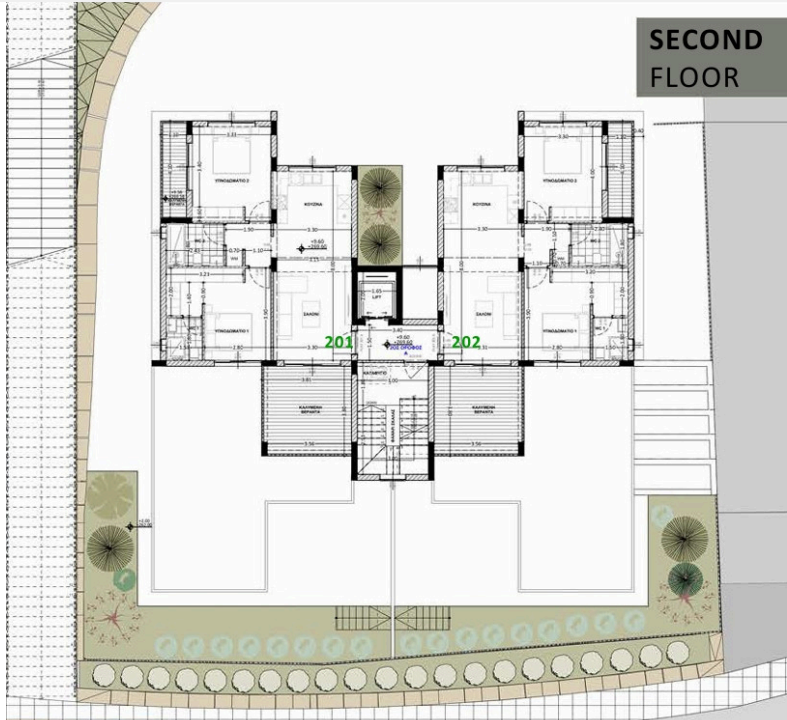




# Floor plans



**SECOND FLOOR**



FLAT 201 -		FLAT 202 -	
LIVING AREA	75m <sup>2</sup>	LIVING AREA	75m <sup>2</sup>
BEDROOMS	2	BEDROOMS	2
BATHROOMS	2	BATHROOMS	2
COVERED VERANDAS	19m <sup>2</sup>	COVERED VERANDAS	19m <sup>2</sup>
UNCOVER VERANDAS	-	UNCOVER VERANDAS	-
COVERED PARKING	11m <sup>2</sup>	COVERED PARKING	11m <sup>2</sup>

