



Reference 19134

Ground Floor 3 Bed Apartment in Palodia

€320,000 +VAT

Palodia Village, Limassol

3 Bedrooms | 2 Bathrooms | 90 m² Covered

Description

- 3 Bedrooms
- 2 W/C
- Internal Area 90m²
- Covered Veranda 8.5m²
- Uncovered Veranda 21m²
- Parking
- Storage
- Energy Efficiency "A"

Covered veranda	8.5 m ²
Uncovered veranda	21 m ²
Parking spaces	1
Energy efficiency rating	A
Year of construction	2026
Status	Under construction



Facilities

- ✓ Aircondition · Provision
 - ✓ Parking · Covered
 - ✓ Elevator
 - ✓ Solar water heater
 - ✓ Solar photovoltaic panels
-

Features

- ✓ Veranda
 - ✓ Quiet area
 - ✓ Near amenities
 - ✓ Double glazing
 - ✓ Shutters, electric (provision)
 - ✓ Easy access to highway
 - ✓ Thermal insulation
-

Gallery



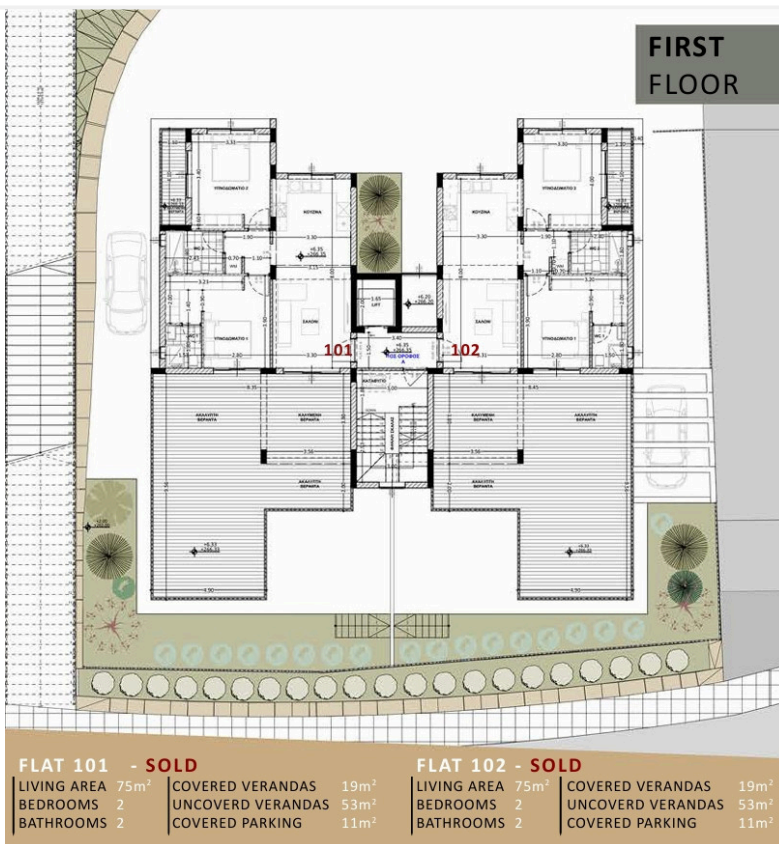
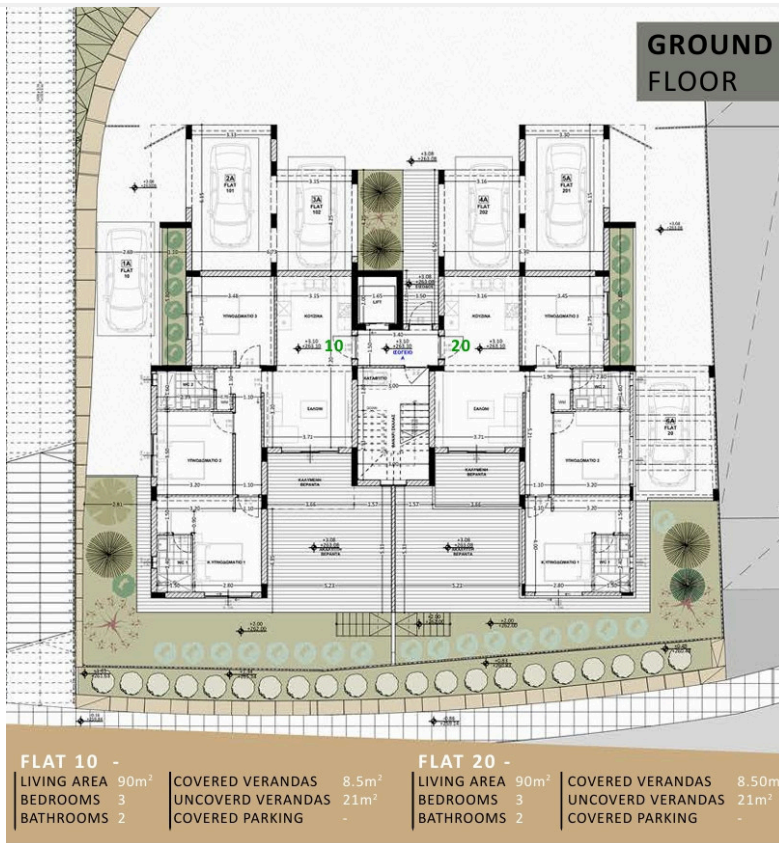




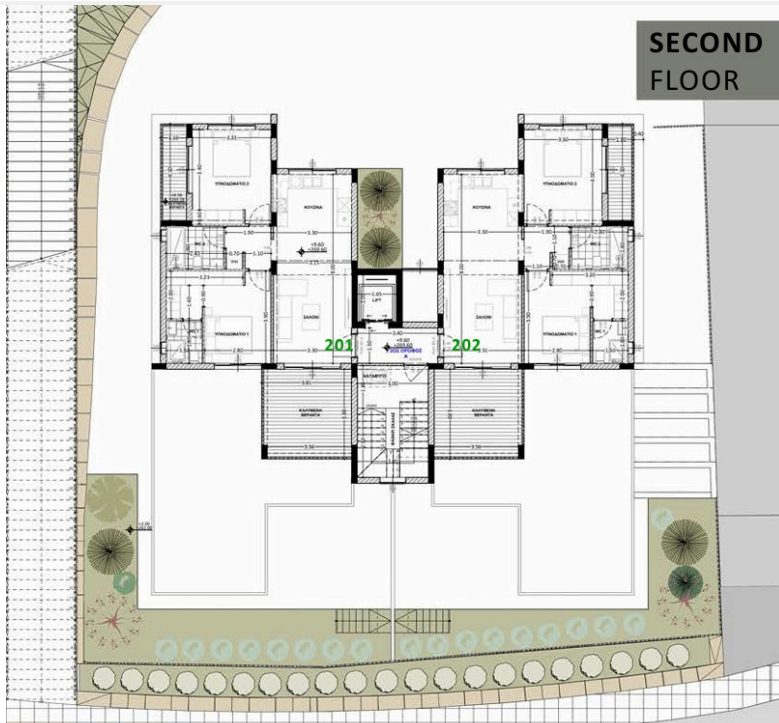




Floor plans



SECOND FLOOR



FLAT 201 -		FLAT 202 -	
LIVING AREA	75m ²	LIVING AREA	75m ²
BEDROOMS	2	BEDROOMS	2
BATHROOMS	2	BATHROOMS	2
COVERED VERANDAS	19m ²	COVERED VERANDAS	19m ²
UNCOVERD VERANDAS	-	UNCOVERD VERANDAS	-
COVERED PARKING	11m ²	COVERED PARKING	11m ²

