



Reference 19061

4 Bed Detached House in Pareklisia, Limassol

€610,000 +VAT

Pareklissia, Limassol

4 Bedrooms | 4 Bathrooms | 130 m² Covered

Description

- 4 bedrooms
- 4 W/C
- Internal Area 130m²
- Covered Verandas 18m²
- Plot Area 430m²
- Covered Parking
- Photovoltaic Panels
- Energy Efficiency "A"

Plot	430 m ²
Covered veranda	18 m ²
Parking spaces	1
Energy efficiency rating	A
Year of construction	2027
Status	Under construction



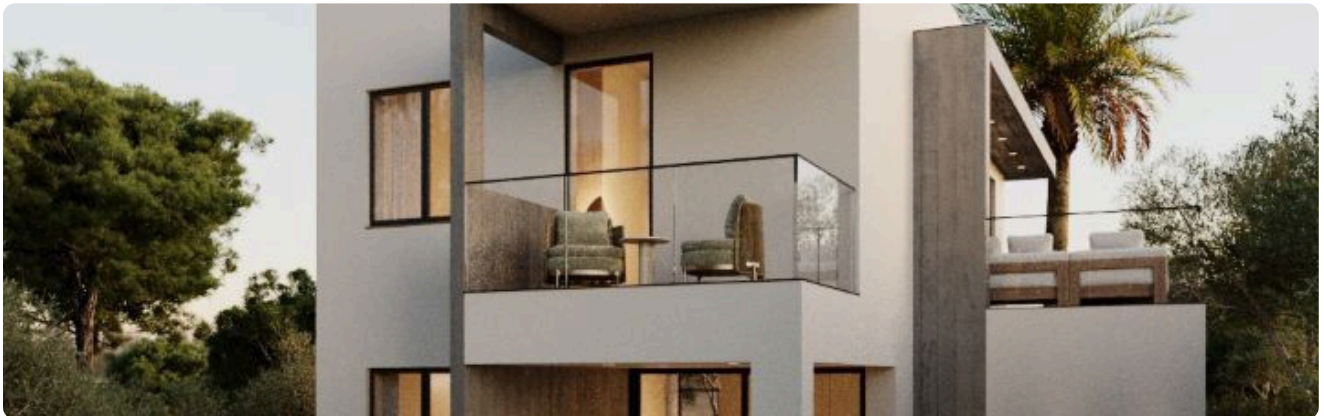
Facilities

- ✓ Aircondition · Provision
 - ✓ Heating · Provision
 - ✓ Parking · Covered
 - ✓ Pool · Optional
 - ✓ Solar water heater
 - ✓ Solar photovoltaic panels
-

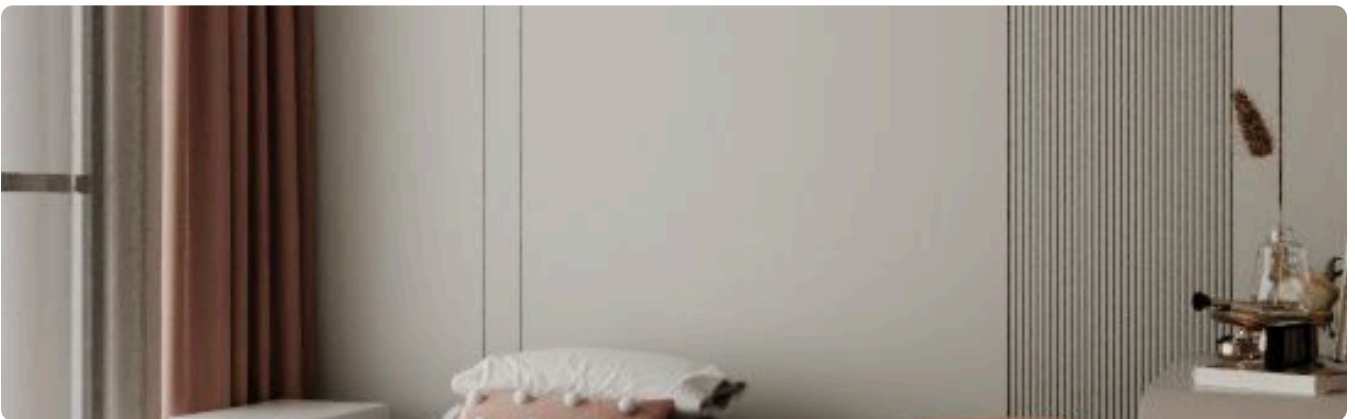
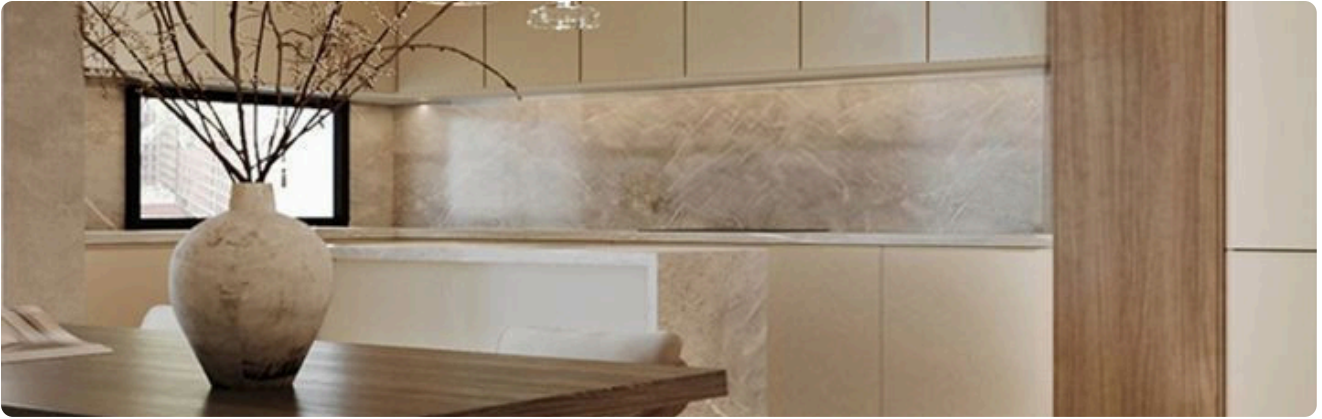
Features

- ✓ Guest WC
 - ✓ Veranda
 - ✓ Ground floor bedroom
 - ✓ Ceramic tiles
 - ✓ CCTV (provision)
 - ✓ En suite bathroom
 - ✓ Modern design
 - ✓ Panoramic view
 - ✓ Alarm system (provision)
 - ✓ Double glazing
 - ✓ Open plan
 - ✓ Garden
 - ✓ Pressurized water system
 - ✓ Internal stairs
 - ✓ Electric car charger (provision)
 - ✓ Pipe-in-pipe plumbing system
 - ✓ Thermal insulation
-

Gallery

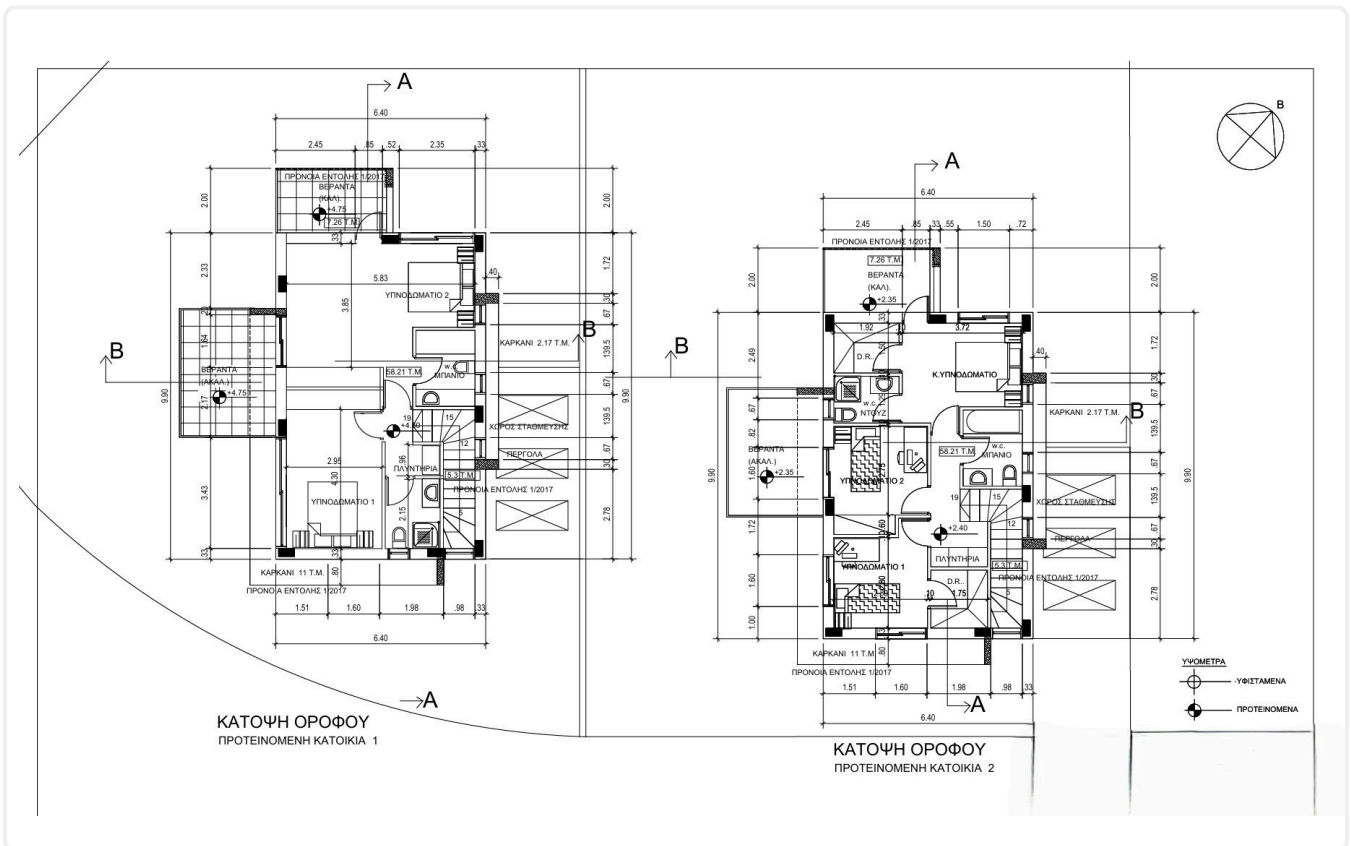
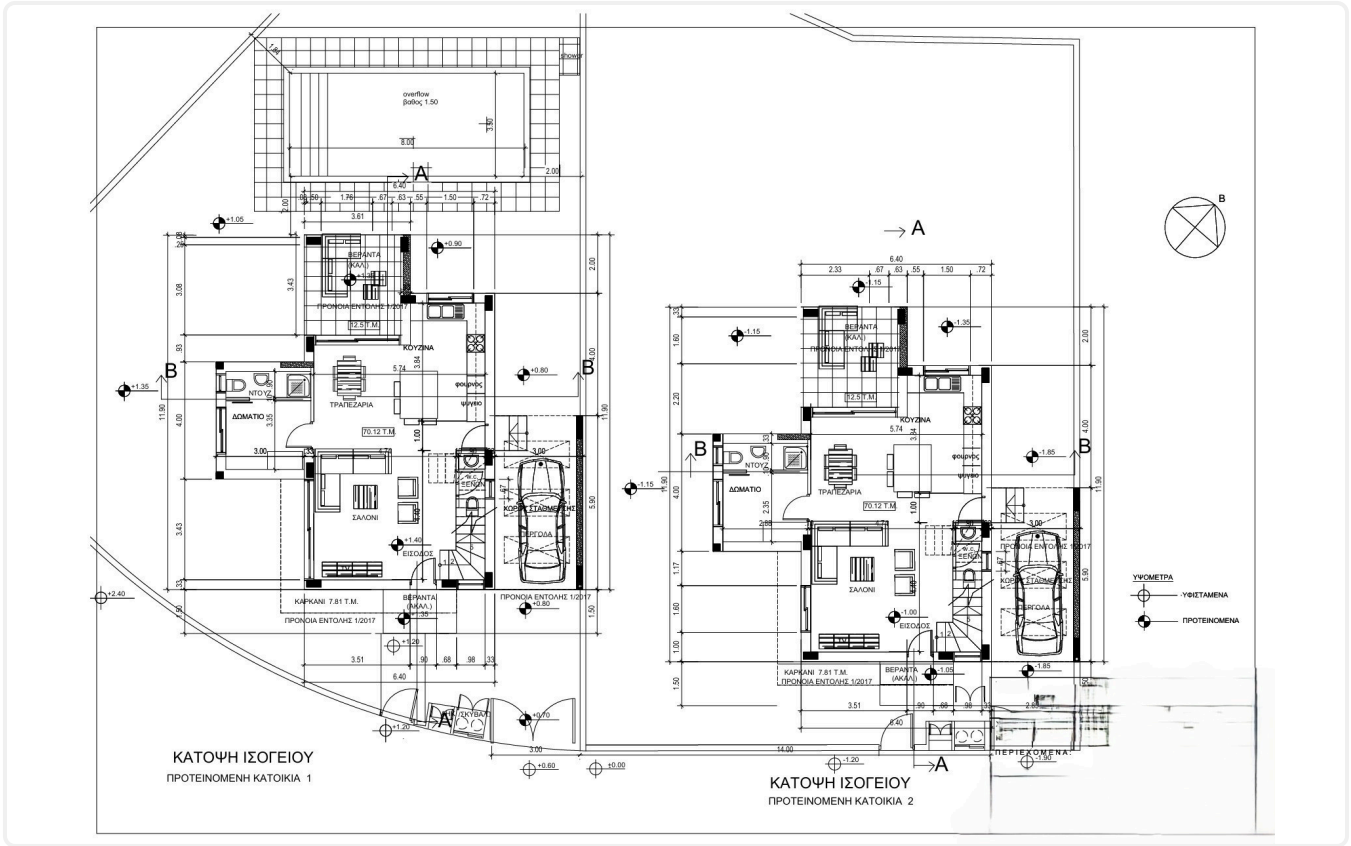


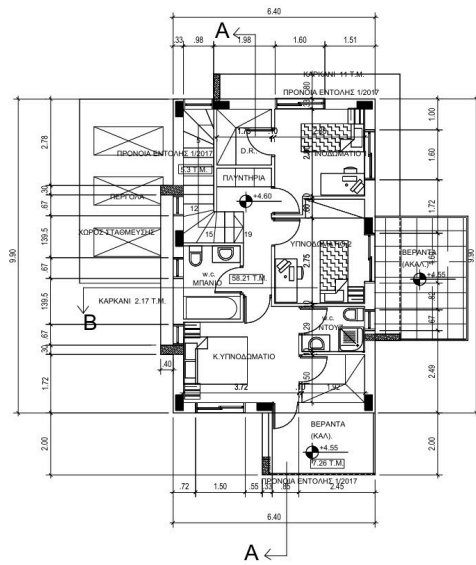
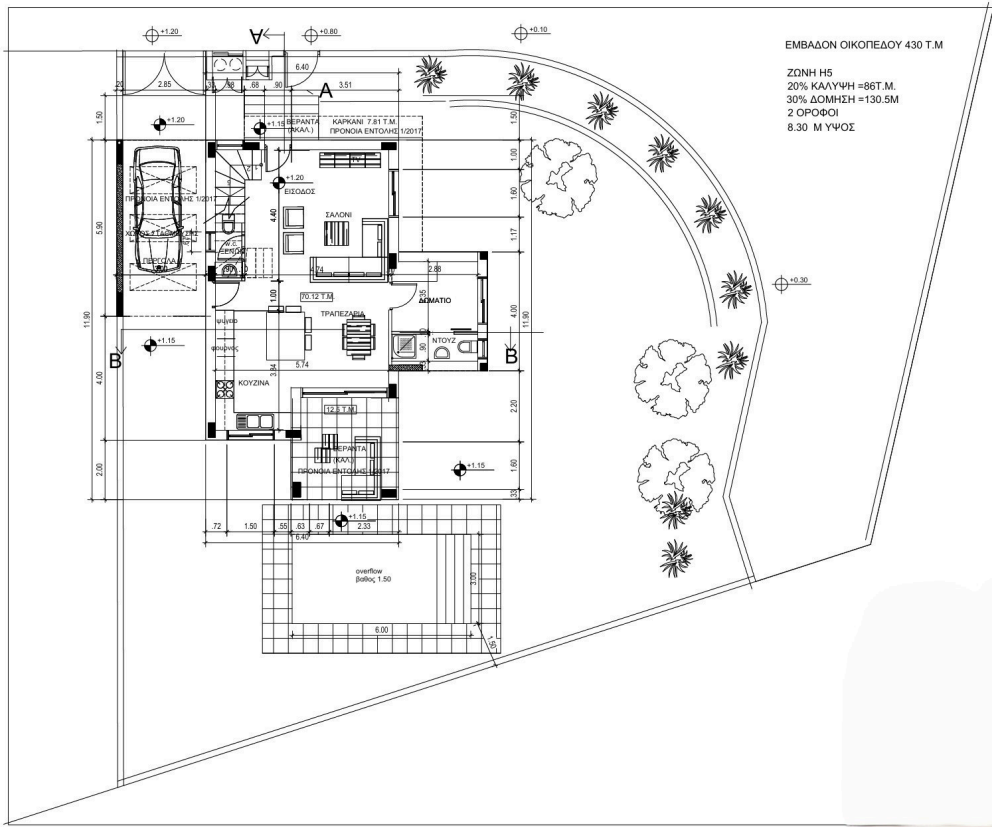


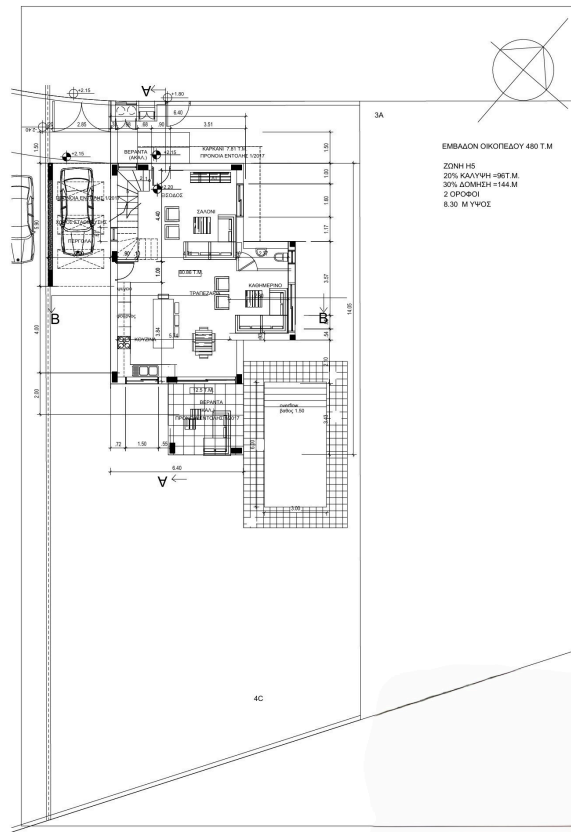




Floor plans







ΕΜΒΑΣΟΝ ΟΙΚΟΤΕΛΟΥΣ 480 Τ.Μ.
 ΖΩΝΗ Η5
 20% ΚΑΛΥΨΗ = 96Τ.Μ.
 30% ΔΟΜΗΣΗ = 144.Μ
 2 ΟΡΟΦΟΙ
 8.30 Μ ΎΨΟΣ

