



Reference 18988

2 Bed Apartment in Panthea, Limassol

€445,000 +VAT

Panthea, Limassol

2 Bedrooms | 2 Bathrooms | 81 m² Covered

Description

- 2 bedrooms
- 2 W/C
- Internal Area 81m²
- Covered Verandas 20m²
- Covered Parking
- Communal Swimming Pool
- A/C
- Gym & Sauna
- Smart Home
- Photovoltaic Panels
- Energy Efficiency "A"

Covered veranda	20 m ²
Parking spaces	1
Energy efficiency rating	A
Year of construction	2028
Status	Off plan



Facilities

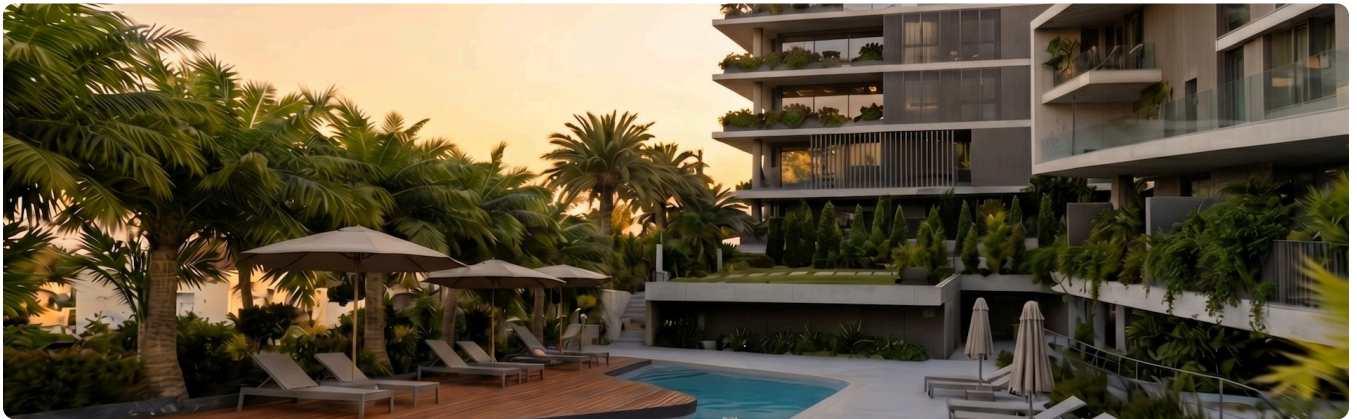
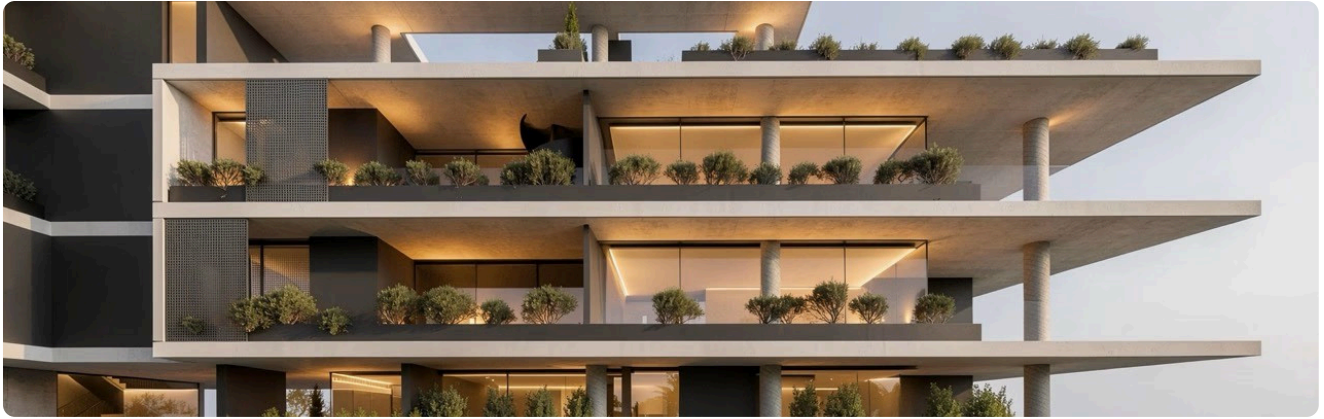
- ✓ Aircondition · Central system
 - ✓ Heating · Provision
 - ✓ Parking · Covered
 - ✓ Pool · Communal
 - ✓ Elevator
 - ✓ Gym
 - ✓ Sauna
 - ✓ Solar photovoltaic panels
-

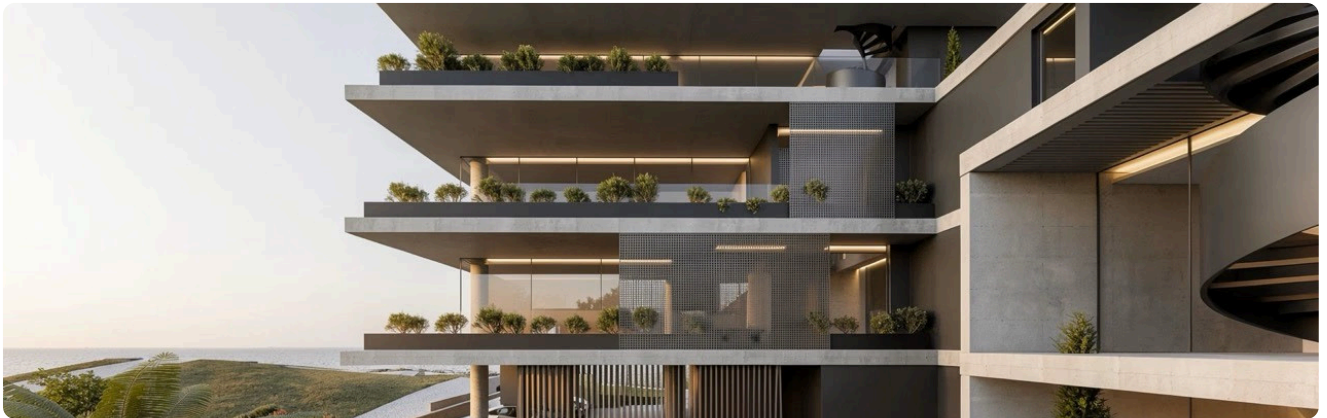
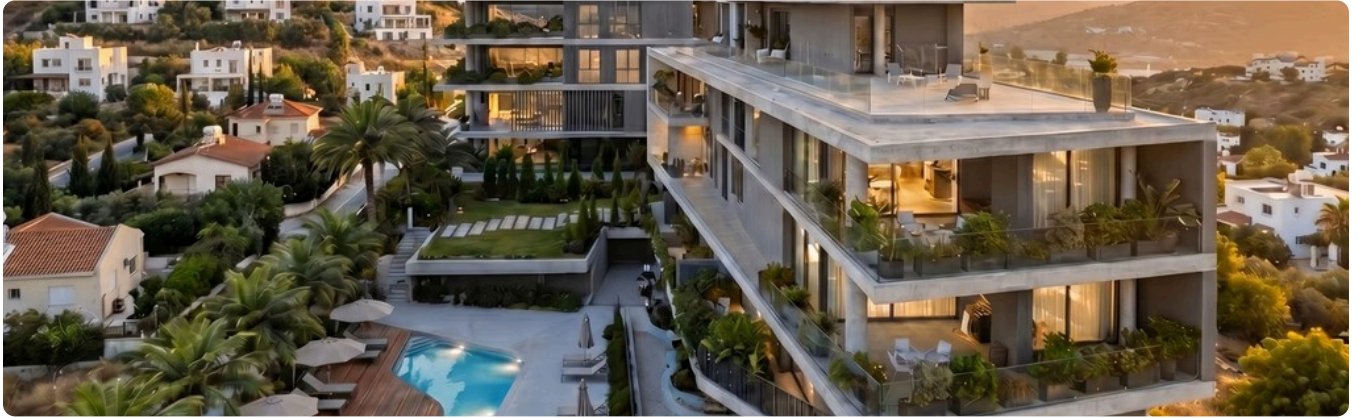
Features

- ✓ Veranda
 - ✓ Luxury specifications
 - ✓ Modern design
 - ✓ Panoramic view
 - ✓ Near amenities
 - ✓ Open plan
 - ✓ Electric car charger (provision)
 - ✓ Easy access to highway
 - ✓ Thermal insulation
 - ✓ Smart home automation
-

Gallery









Floor plans



