



Reference 18812

1 Bed Penthouse Apartment in Kolossi, Limassol

€157,000 +VAT

Kolossi, Limassol

1 Bedroom | 1 Bathroom | 38.09 m² Covered

Description

- 1 bedroom
- 1 W/C
- Internal Area 38.09m²
- Covered Parking
- Storage

| | |
|--------------------------|--------------------|
| Parking spaces | 1 |
| Energy efficiency rating | A |
| Year of construction | 2027 |
| Status | Under construction |



Facilities

✓ Aircondition · Provision ✓ Parking · Covered ✓ Elevator ✓ Storage ✓ Solar water heater

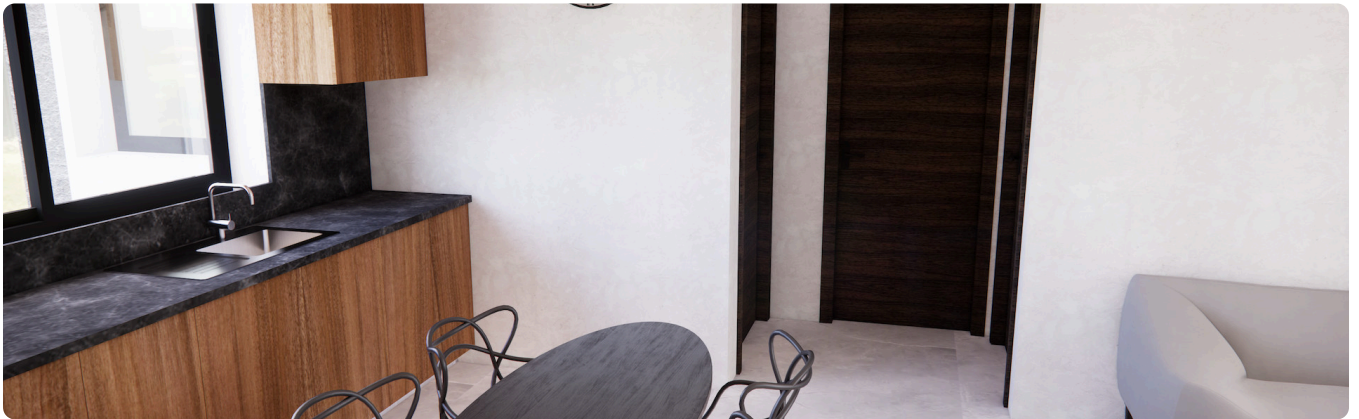
Features

✓ Quiet area ✓ Ceramic tiles ✓ Modern design ✓ Double glazing ✓ Open plan
✓ Pipe-in-pipe plumbing system ✓ Thermal insulation

Gallery

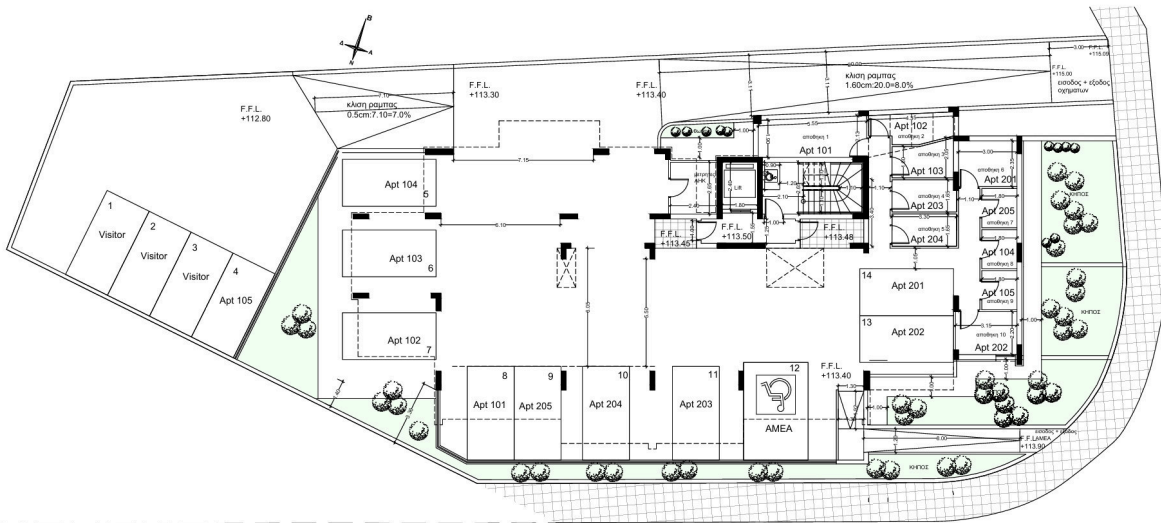




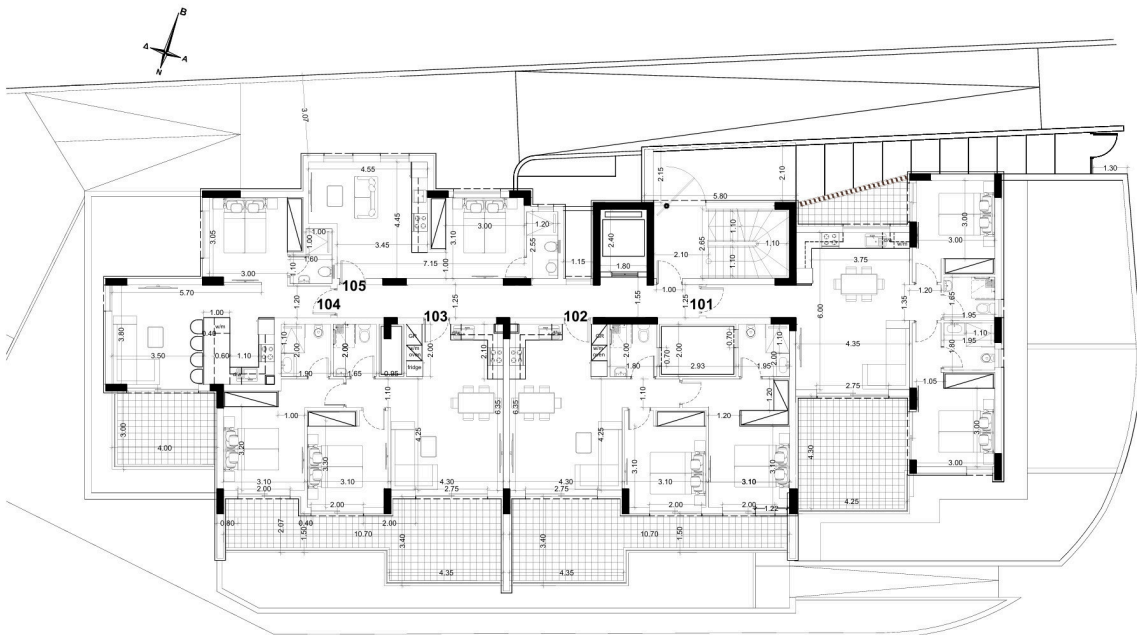




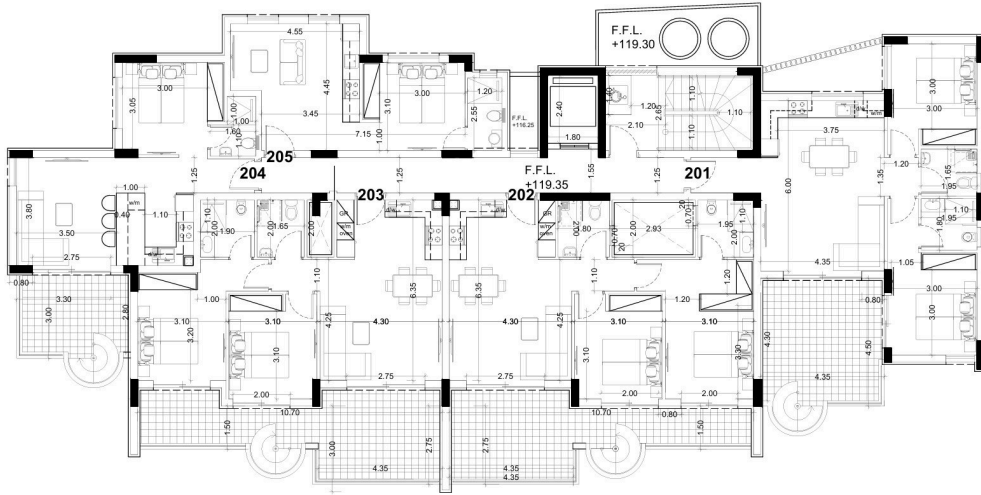
Floor plans



1st Floor



2nd Floor



Roof Garden

