



Reference 18411

1 Bed Penthouse Apartment in Germasogeia, Limassol

€250,000 +VAT

Germasogia, Limassol

1 Bedroom

1 Bathroom

50.75 m² Covered

Description

- 1 bedroom
- 1 W/C
- Internal Area 50.75m²
- Covered Verandas 12.95m²
- Uncovered Verandas 6.2m²
- Covered Parking
- Communal Swimming Pool
- Storage
- Energy Efficiency "A"

Covered veranda 12.95 m²

Uncovered veranda 6.2 m²

Parking spaces 1

Energy efficiency rating A

Year of construction 2027

Status Under construction



Facilities

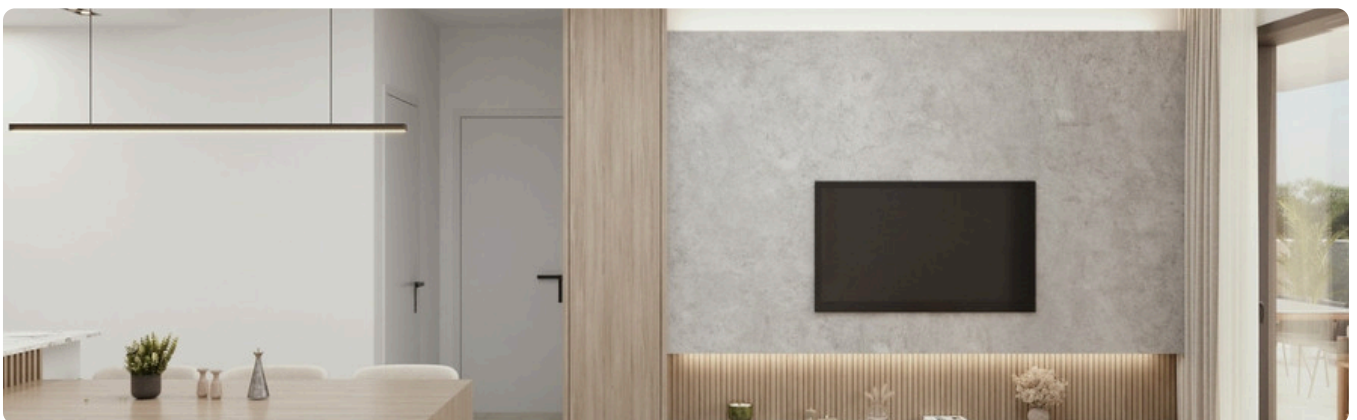
✓ Parking · Covered ✓ Pool · Communal ✓ Elevator ✓ Storage

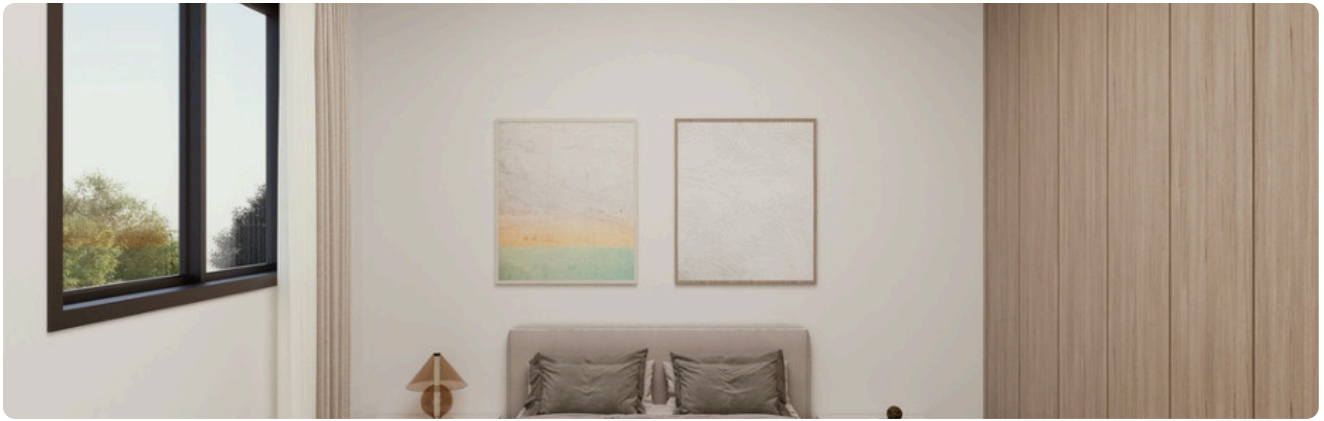
Features

✓ Veranda ✓ Modern design ✓ Near amenities ✓ Open plan ✓ Easy access to highway
✓ Thermal insulation

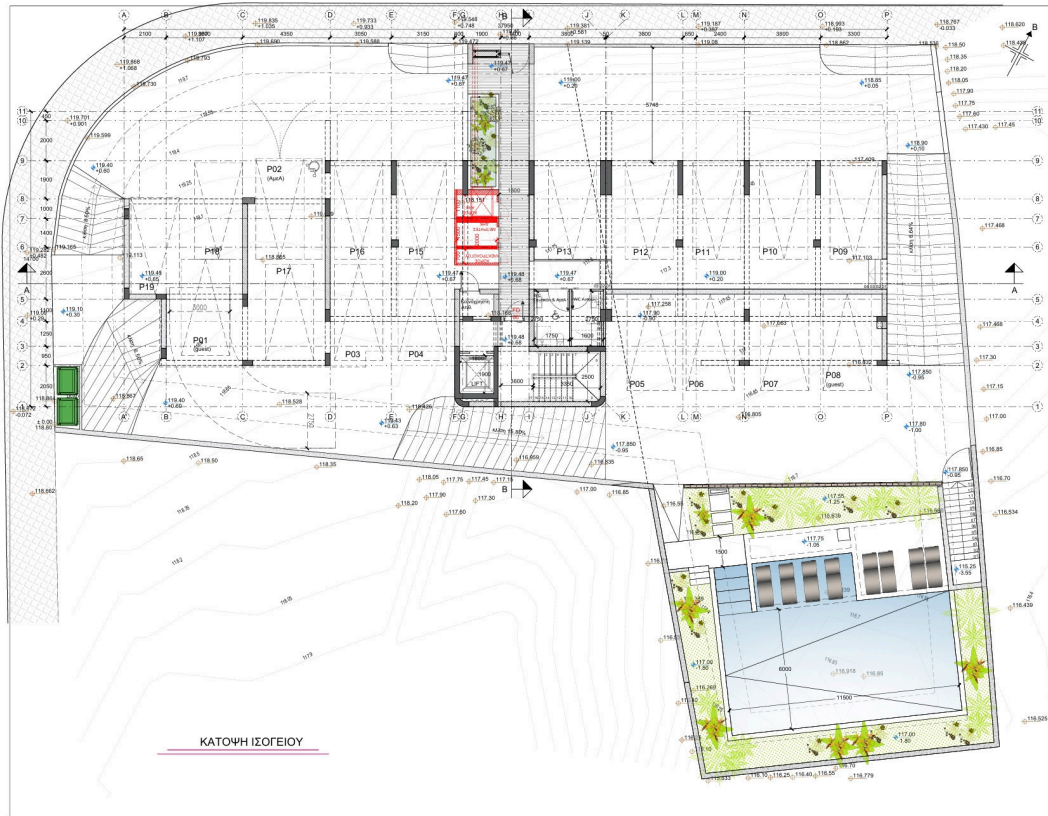
Gallery



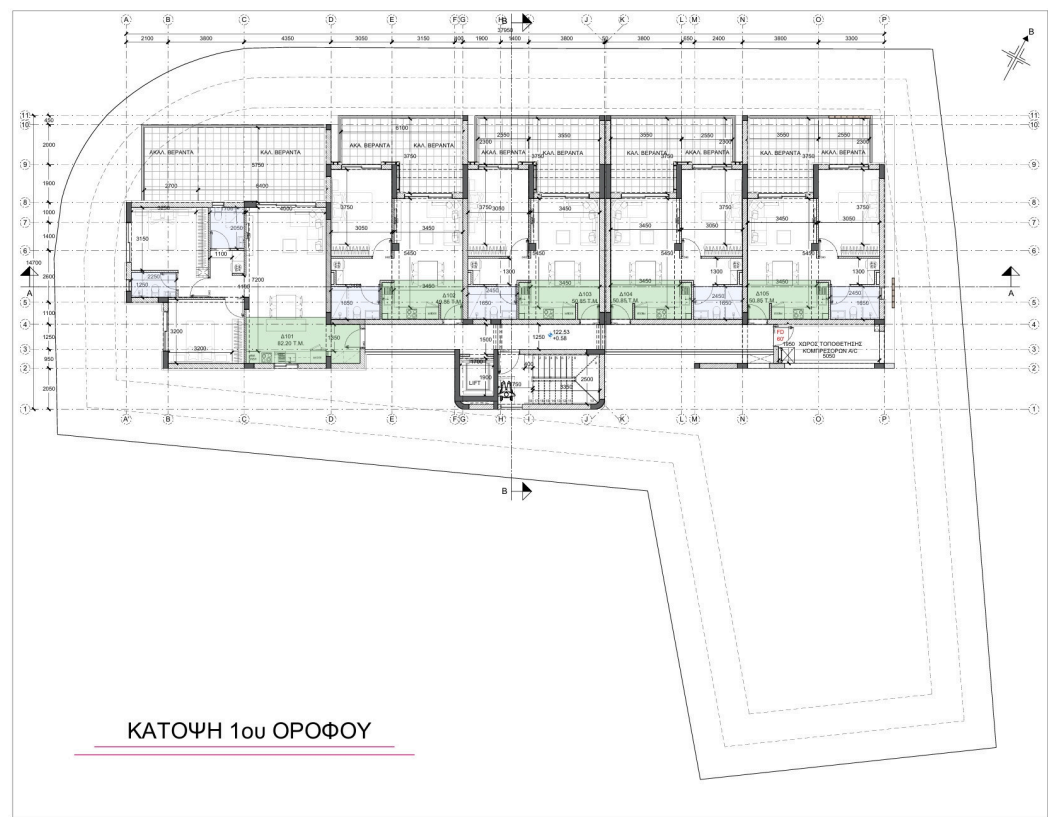




Floor plans



ΚΑΤΟΨΗ ΙΣΟΓΕΙΟΥ



ΚΑΤΟΨΗ 1ου ΟΡΟΦΟΥ



